

REGISTRATION SEAL

CONSULTANT

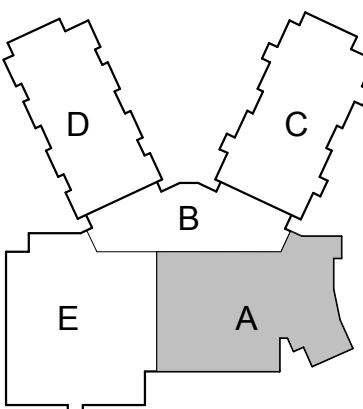
PROJECT TITLE

New Elementary School

Schoolcraft Community Schools
SCHOOLCRAFT, MI

DRAWING TITLE

First Floor Reflected Ceiling Plan - Zone 'A'



KEYPLAN

ISSUE DATES

[illegible]

05/13/21	100% CONSTRUCTION DOCUMENTS
----------	-----------------------------

DATE: ISSUED FOR

DRAWN MN

CHECKED FJG

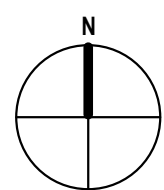
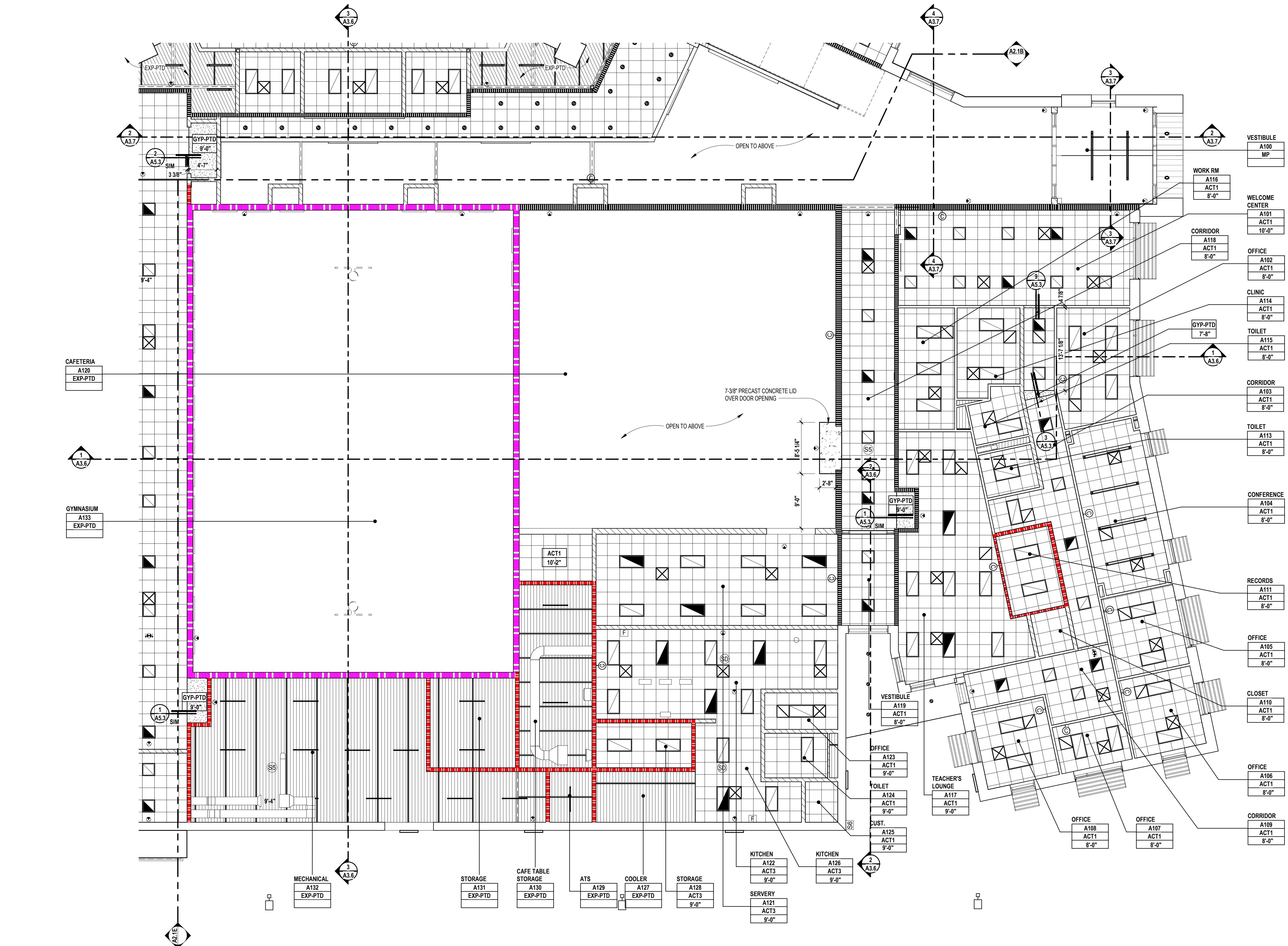
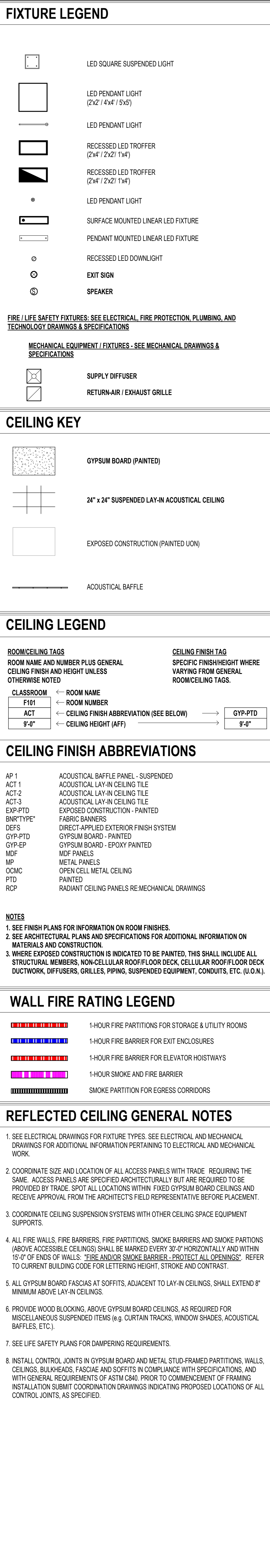
APPROVED: FJG

PROJECT NO.

20015

DRAWING NO

A2.1A



FIRST FLOOR REFLECTED CEILING PLAN - ZONE 'A'

SCALE: 1/8" = 1'-0"

REGISTRATION SEAL

CONSULTANT

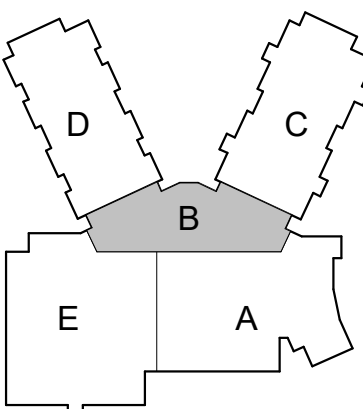
PROJECT TITLE

New Elementary School

Schoolcraft Community Schools
SCHOOLCRAFT, MI

DRAWING TITLE

First Floor Reflected Ceiling Plan - Zone 'B'



KEYPLAN

ISSUE DATES

[illegible]

DATE: ISSUED FOR

DRAWN

CHECKED FJG

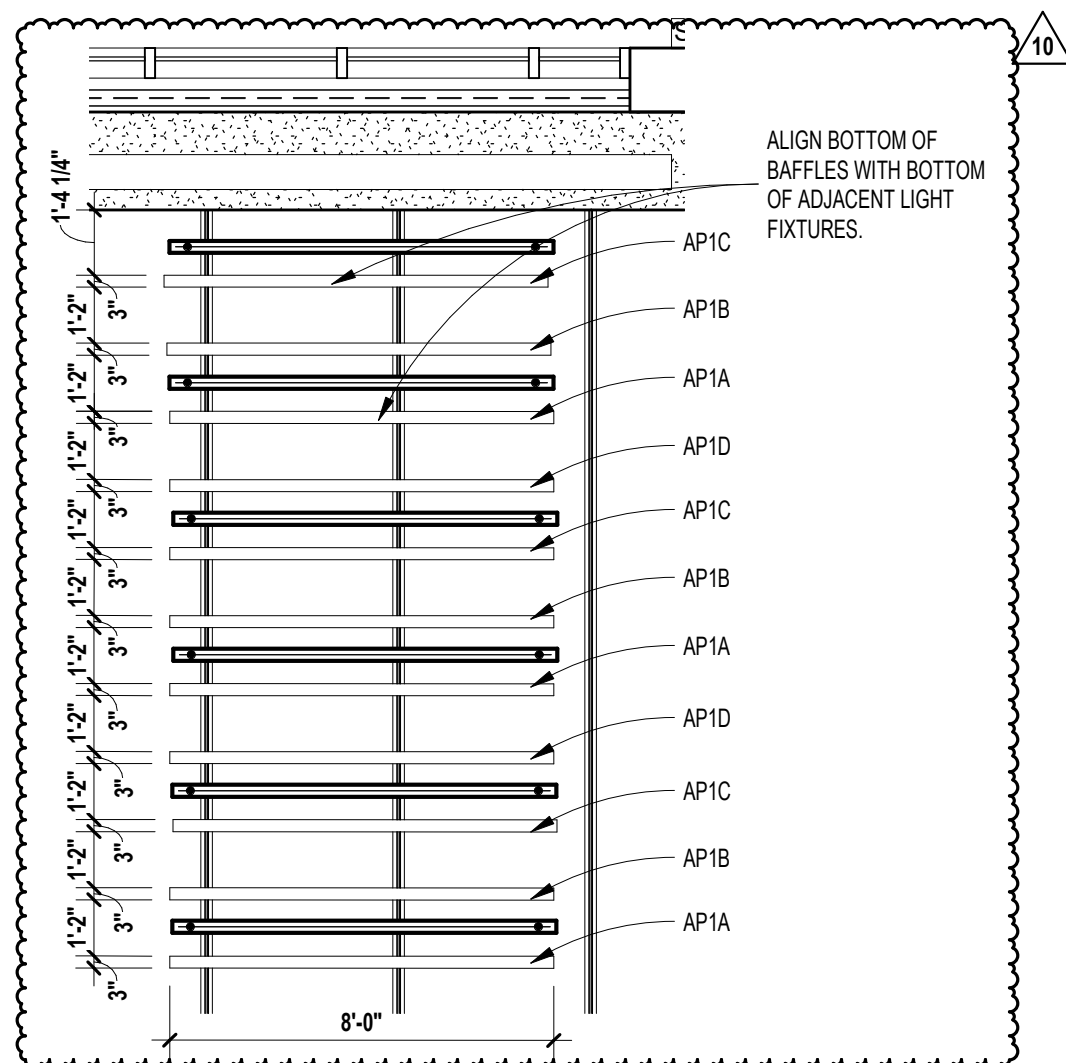
APPROVED FJG

PROJECT NO.

20015

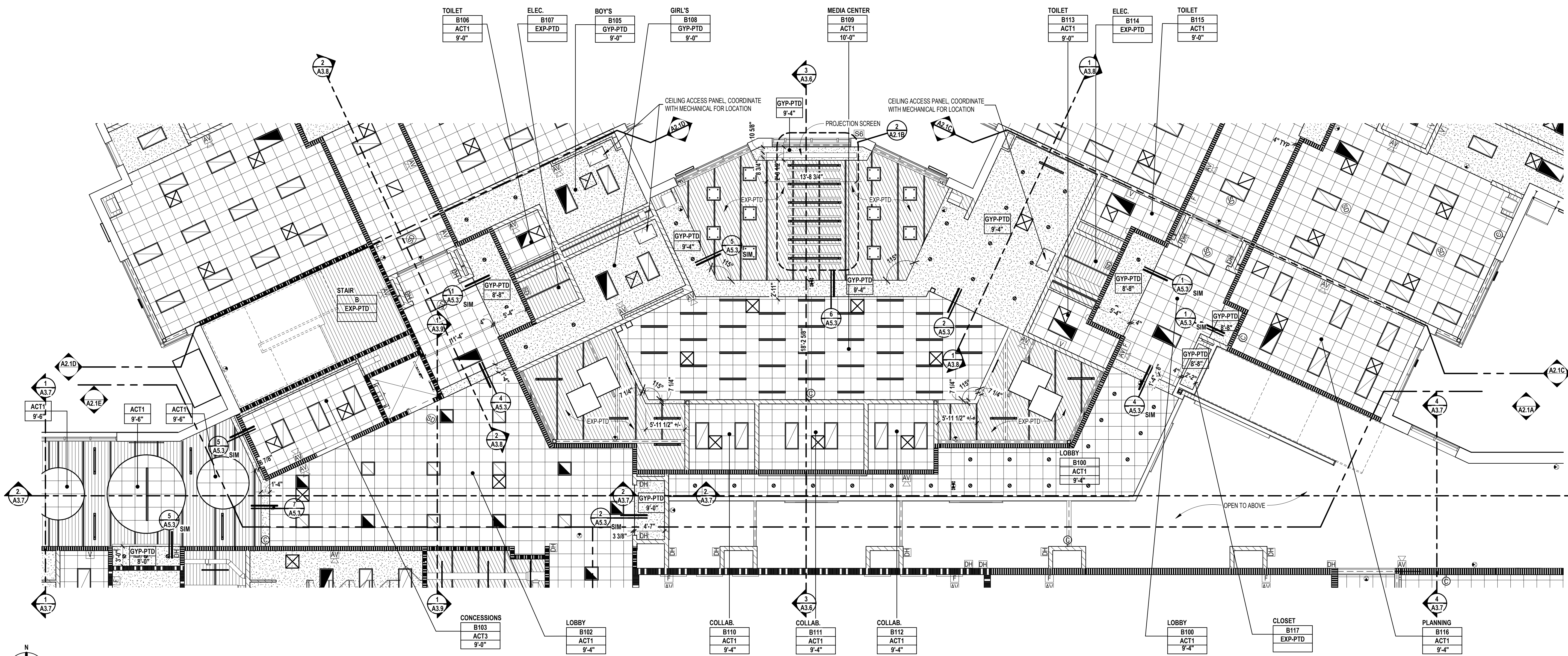
DRAWING NO

A2.1B



2 ACOUSTICAL BAFFLES

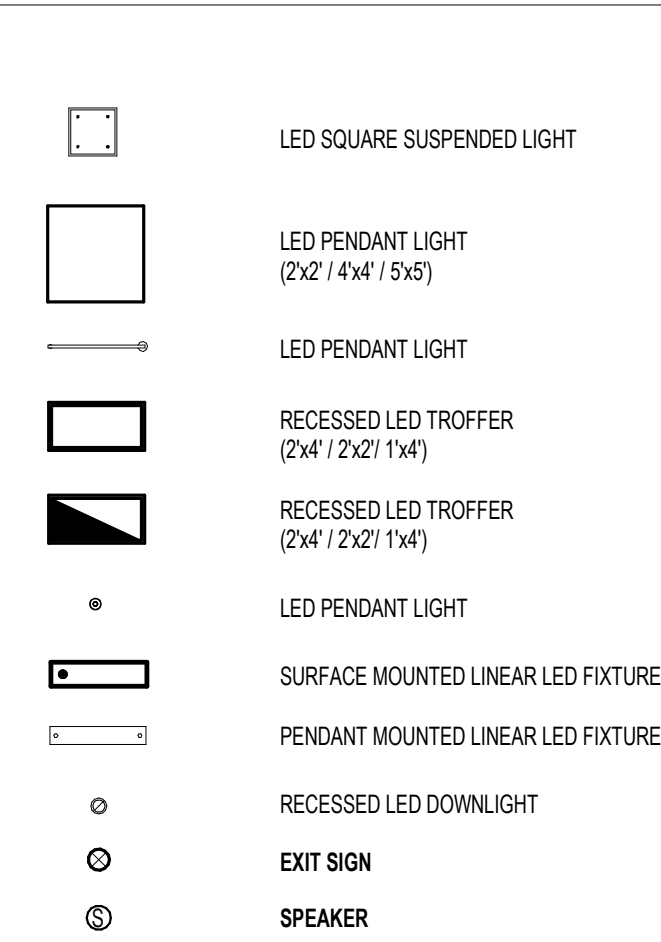
SCALE: 1/4" = 1'-0"



FIRST FLOOR REFLECTED CEILING PLAN - ZONE 'B'

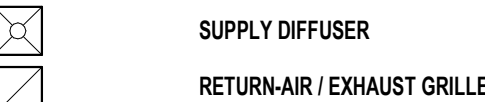
SCALE: 1/8" = 1'-0"

FIXTURE LEGEND

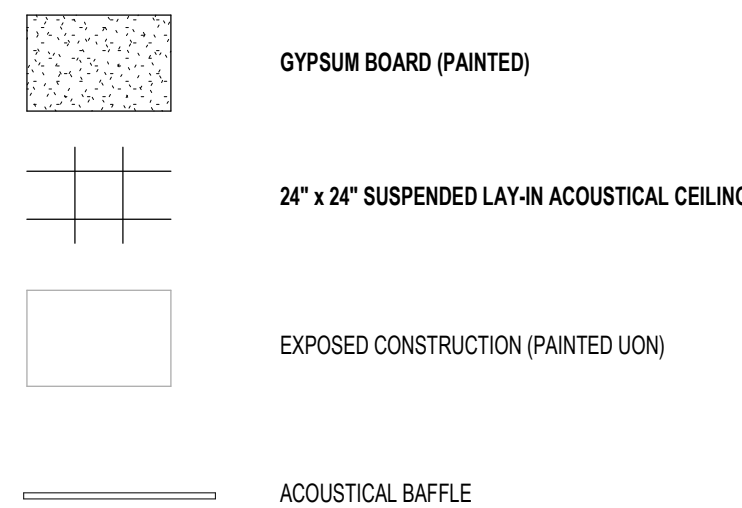


FIRE / LIFE SAFETY FIXTURES: SEE ELECTRICAL, FIRE PROTECTION, PLUMBING, AND TECHNOLOGY DRAWINGS & SPECIFICATIONS

MECHANICAL EQUIPMENT / FIXTURES - SEE MECHANICAL DRAWINGS & SPECIFICATIONS



CEILING KEY



CEILING LEGEND

ROOM/CEILING TAGS		CEILING FINISH TAG	
ROOM NAME AND NUMBER PLUS GENERAL CEILING FINISH AND HEIGHT UNLESS OTHERWISE NOTED		SPECIFIC FINISH/HEIGHT WHERE VARYING FROM GENERAL ROOM/CEILING TAGS.	
CLASSROOM	← ROOM NAME		
F101	← ROOM NUMBER		
ACT	← CEILING FINISH ABBREVIATION (SEE BELOW)		GYP-PTD
9'-0"	← CEILING HEIGHT (AFF)		9'-0"




CEILING FINISH ABBREVIATIONS

AP 1	ACOUSTICAL BAFFLE PANEL - SUSPENDED
ACT 1	ACOUSTICAL LAY-IN CEILING TILE
ACT-2	ACOUSTICAL LAY-IN CEILING TILE
ACT-3	ACOUSTICAL LAY-IN CEILING TILE
EXP-PTD	EXPOSED CONSTRUCTION - PAINTED
BNR"TYPE"	FABRIC BANNERS
DEFS	DIRECT APPLIED EXTERIOR FINISH SYSTEM
GYP-PTD	GYPSUM BOARD - PAINTED
GYP-EP	GYPSUM BOARD - EPOXY PAINTED
MDF	MDF PANELS
MP	METAL PANELS
OCMC	OPEN CELL METAL CEILING
PTD	PAINTED
RPC	RADIANT CEILING PANELS RE-MECHANICAL DRAWINGS

NOTES

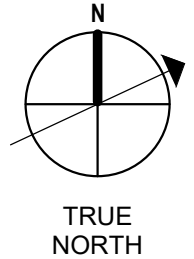
1. SEE FINISH PLANS FOR INFORMATION ON ROOM FINISHES.
2. SEE ARCHITECTURAL PLANS AND SPECIFICATIONS FOR ADDITIONAL INFORMATION ON MATERIALS AND CONSTRUCTION.
3. WHERE EXPOSED CONSTRUCTION IS INDICATED TO BE PAINTED, THIS SHALL INCLUDE ALL STRUCTURAL MEMBERS, NON-CELLULAR ROOF/FLOOR DECK, CELLULAR ROOF/FLOOR DECK DUCTWORK, DIFFUSERS, GRILLES, PIPING, SUSPENDED EQUIPMENT, CONDUITS, ETC. (U.O.N.).

WALL FIRE RATING LEGEND

	1-HOUR FIRE PARTITIONS FOR STORAGE & UTILITY ROOMS
	1-HOUR FIRE BARRIER FOR EXIT ENCLOSURES
	1-HOUR FIRE BARRIER FOR ELEVATOR HOISTWAYS
	1-HOUR SMOKE AND FIRE BARRIER
	SMOKE PARTITION FOR EGRESS CORRIDORS

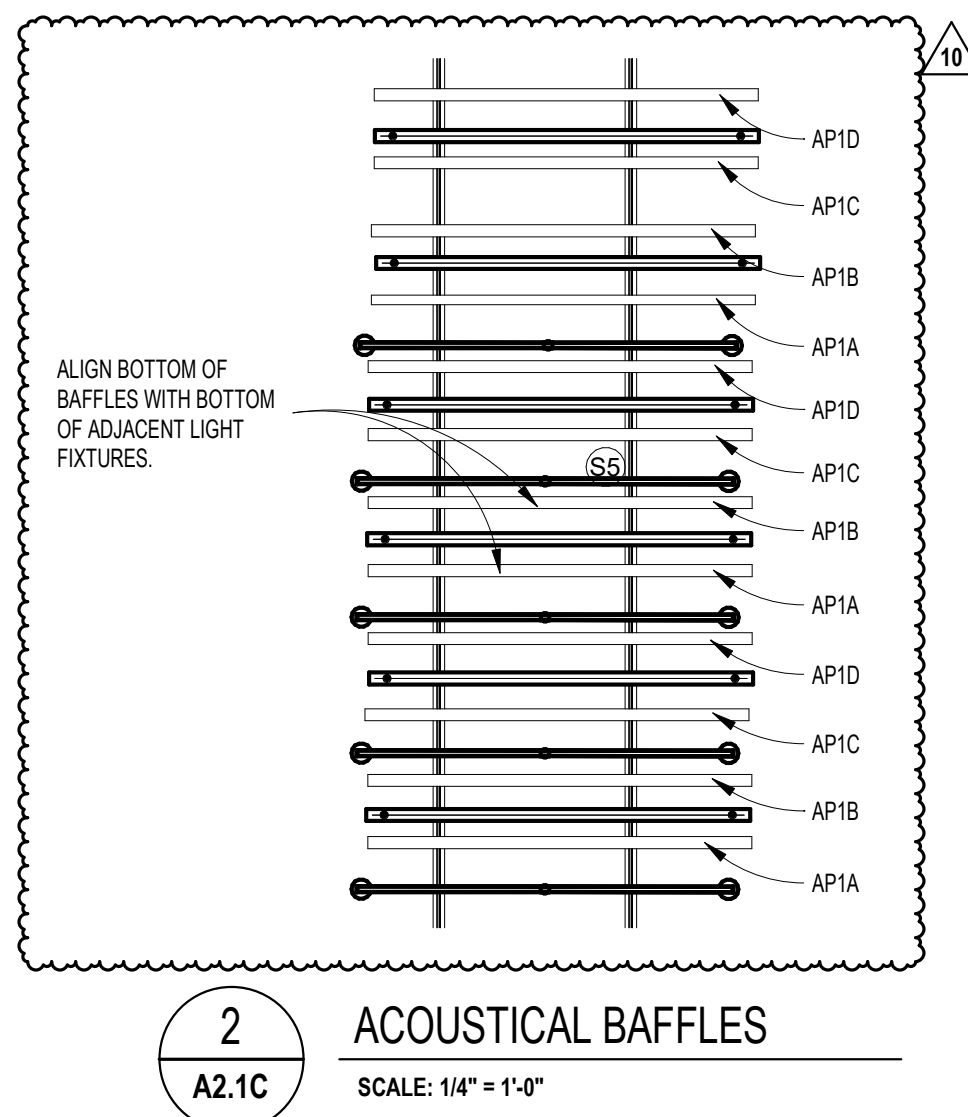
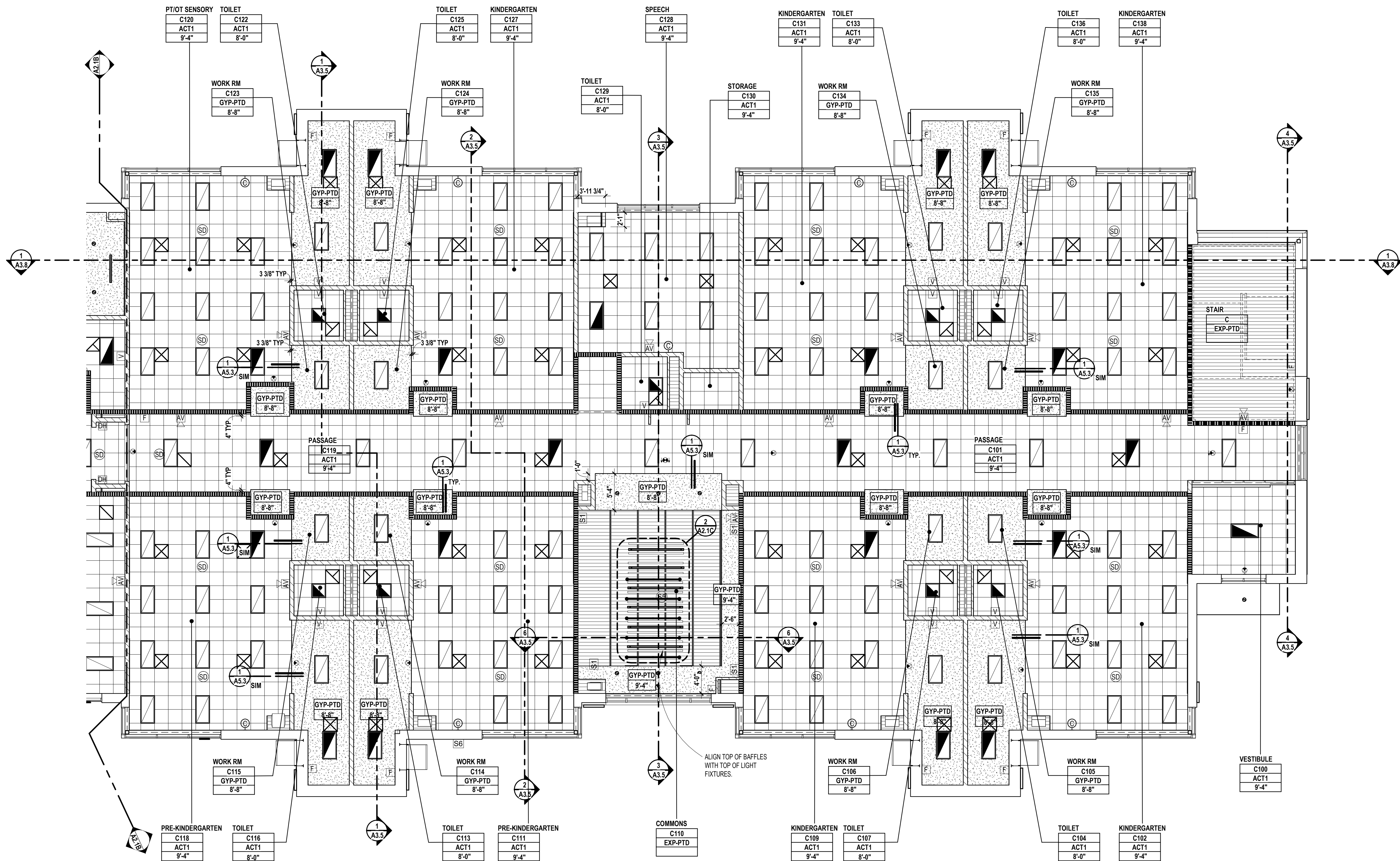
REFLECTED CEILING GENERAL NOTES

1. SEE ELECTRICAL DRAWINGS FOR FIXTURE TYPES. SEE ELECTRICAL AND MECHANICAL DRAWINGS FOR ADDITIONAL INFORMATION PERTAINING TO ELECTRICAL AND MECHANICAL WORK.
2. COORDINATE SIZE AND LOCATION OF ALL ACCESS PANELS WITH TRADES REQUIRING THE SAME. ACCESS PANELS ARE REQUIRED ARCHITECTURALLY BUT ARE REQUIRED TO BE PROVIDED BY TRADE. SPOT ALL LOCATIONS WITH FIXED GYPSUM BOARD CEILINGS AND RECEIVE APPROVAL FROM THE ARCHITECT'S FIELD REPRESENTATIVE BEFORE PLACEMENT.
3. COORDINATE CEILING SUSPENSION SYSTEMS WITH OTHER CEILING SPACE EQUIPMENT SUPPORTS.
4. ALL FIRE WALLS, FIRE BARRIERS, FIRE PARTITIONS, SMOKE BARRIERS AND SMOKE PARTITIONS ARE ACCESSIBLE CEILINGS SHALL BE MARKED EVERY 8" BY HORIZONTALLY AND WITHIN 15" OF END WALLS. "FIRE AND/OR SMOKE BARRIER, PROTECT ALL OPENINGS. REFER TO CURRENT BUILDING CODE FOR LETTERING HEADING, STYLE AND CONTRAST.
5. ALL GYPSUM BOARD CASING AT SOFFITS, ADJACENT TO LOYAL CEILINGS, SHALL EXTEND 8" MINIMUM ABOVE LAY-IN CEILING.
6. PROVIDE WOOD BLOCKING ABOVE GYPSUM BOARD CEILINGS, AS REQUIRED FOR IRREGULARLY SUSPENDED ITEMS (E.G. CERTAIN TRACKS, WINDOW SHADES, ACoustICAL Baffles, ETC.).
7. SEE LIFE SAFETY PLAN FOR DAMPING REQUIREMENTS.
8. INSTALL CONTROL JOINTS IN GYPSUM BOARD AND MELT, STUD-FRAMED PARTITIONS, WALLS, BULKHEADS, BULKHEADS, CASINGS AND SOFFITS IN COMPLIANCE WITH SPECIFICATIONS, AND WITH GENERAL REQUIREMENTS OF ASTM DRAWINGS. PRIOR TO COMMENCEMENT OF FRAMING, SUBMIT TO ARCHITECT FOR REVIEW AND OBTAINING OF APPROVAL. PROVIDE LOCATIONS OF ALL CONTROL JOINTS, AS SPECIFIED.



FIRST FLOOR REFLECTED CEILING PLAN - ZONE 'C'

SCALE: 1/8" = 1'-0"



FIXTURE LEGEND

- LED SQUARE SUSPENDED LIGHT
- LED PENDANT LIGHT (2'x2' / 4'x4' / 5'x5')
- LED PENDANT LIGHT
- RECESSED LED TROFFER (2'x4' / 2'x2' / 1'x4')
- RECESSED LED TROFFER (2'x4' / 2'x2' / 1'x4')
- LED PENDANT LIGHT
- SURFACE MOUNTED LINEAR LED FIXTURE
- PENDANT MOUNTED LINEAR LED FIXTURE
- RECESSED LED DOWNLIGHT
- EXIT SIGN
- SPEAKER

FIRE / LIFE SAFETY FIXTURES: SEE ELECTRICAL, FIRE PROTECTION, PLUMBING, AND TECHNOLOGY DRAWINGS & SPECIFICATIONS

MECHANICAL EQUIPMENT / FIXTURES - SEE MECHANICAL DRAWINGS & SPECIFICATIONS

- SUPPLY DIFFUSER
- RETURN-AIR / EXHAUST GRILLE

CEILING KEY

- GYPSUM BOARD (PAINTED)
- 24" x 24" SUSPENDED LAY-IN ACOUSTICAL CEILING
- EXPOSED CONSTRUCTION (PAINTED UOI)
- ACOUSTICAL BAFFLE

CEILING LEGEND

ROOM/CEILING TAGS	ROOM NAME	ROOM NUMBER	CEILING FINISH ABBREVIATION (SEE BELOW)	CEILING FINISH TAG
F101	ROOM NAME	ROOM NUMBER	CEILING FINISH ABBREVIATION (SEE BELOW)	CEILING FINISH TAG
ACT	ROOM NAME	ROOM NUMBER	CEILING FINISH ABBREVIATION (SEE BELOW)	CEILING FINISH TAG
9'-0"	ROOM NAME	ROOM NUMBER	CEILING FINISH ABBREVIATION (SEE BELOW)	CEILING FINISH TAG

CEILING FINISH ABBREVIATIONS

- AP-1 ACOUSTICAL BAFFLE PANEL - SUSPENDED
- ACT-1 ACOUSTICAL LAY-IN CEILING TILE
- ACT-2 ACOUSTICAL LAY-IN CEILING TILE
- ACT-3 ACOUSTICAL LAY-IN CEILING TILE
- EXP-PTD EXPOSED CONSTRUCTION - PAINTED
- BNR-TYPE* FABRIC BANNERS
- DEFS DIRECT APPLIED EXTERIOR FINISH SYSTEM
- GYSP-PTD GYPSUM BOARD - PAINTED
- GYSP-EP GYPSUM BOARD - EPOXY PAINTED
- MDP MDF PANELS
- MP METAL PANELS
- OCMC OPEN CELL METAL CEILING
- PTD PAINTED
- RCP RADIANT CEILING PANELS RE-MECHANICAL DRAWINGS

- NOTES
- 1. SEE FINISH PLANS FOR INFORMATION ON ROOM FINISHES.
- 2. SEE ARCHITECTURAL PLANS AND SPECIFICATIONS FOR ADDITIONAL INFORMATION ON MATERIALS AND CONSTRUCTION.
- 3. WHERE EXPOSED CONSTRUCTION IS INDICATED TO BE PAINTED, THIS SHALL INCLUDE ALL STRUCTURAL MEMBERS, NON-CELLULAR ROOF/FLOOR DECK, CELLULAR ROOF/FLOOR DECK, DUCTWORK, DIFFUSERS, GRILLES, PIPING, SUSPENDED EQUIPMENT, CONDUITS, ETC. (U.O.I.).

WALL FIRE RATING LEGEND

- 1-HOUR FIRE PARTITIONS FOR STORAGE & UTILITY ROOMS
- 1-HOUR FIRE BARRIER FOR EXIT ENCLOSURES
- 1-HOUR FIRE BARRIER FOR ELEVATOR HOISTWAYS
- 1-HOUR SMOKE AND FIRE BARRIER
- SMOKE PARTITION FOR EGRESS CORRIDORS

REFLECTED CEILING GENERAL NOTES

- 1. SEE ELECTRICAL DRAWINGS FOR FIXTURE TYPES. SEE ELECTRICAL AND MECHANICAL DRAWINGS FOR ADDITIONAL INFORMATION PERTAINING TO ELECTRICAL AND MECHANICAL WORK.
- 2. COORDINATE SIZE AND LOCATION OF ALL ACCESS PANELS WITH TRADE. REQUIRE THE SAME. ACCESS PANELS ARE SPECIFIED ARCHITECTURALLY BUT ARE REQUIRED TO BE PROVIDED BY TRADE. SPOT ALL LOCATIONS WITHIN FIXED GYPSUM BOARD CEILINGS AND RECEIVE APPROVAL FROM THE ARCHITECT'S FIELD REPRESENTATIVE BEFORE PLACEMENT.
- 3. COORDINATE CEILING SUSPENSION SYSTEMS WITH OTHER CEILING SPACE EQUIPMENT SUPPORTS.
- 4. ALL FIRE WALLS, FIRE BARRIERS, FIRE PARTITIONS, SMOKE BARRIERS AND SMOKE PARTITIONS (ABOVE ACCESSIBLE CEILINGS) SHALL BE MARKED EVERY 30'-0" HORIZONTALLY AND WITHIN 10'-0" OF ENDS OF WALLS. THIS INCLUDES SMOKE BARRIER. PROTECT ALL OPENINGS. REFER TO CURRENT BUILDING CODE FOR LETTERING HEIGHT, STROKE AND CONTRAST.
- 5. ALL GYPSUM BOARD FASCIAE AT SOFFITS, ADJACENT TO LAY-IN CEILINGS, SHALL EXTEND 8" MINIMUM ABOVE LAY-IN CEILINGS.
- 6. PROVIDE WOOD BLOCKING ABOVE GYPSUM BOARD CEILINGS, AS REQUIRED FOR MISCELLANEOUS SUSPENDED ITEMS (e.g. CURTAIN TRACKS, WINDOW SHADES, ACOUSTICAL BAFFLES, ETC.).
- 7. SEE LIFE SAFETY PLANS FOR DAMPERING REQUIREMENTS.
- 8. INSTALL CONTROL JOINTS IN GYPSUM BOARD AND METAL STUD-FRAMED PARTITIONS, WALLS, CEILINGS, BULKHEADS, FASCIAE AND SOFFITS IN COMPLIANCE WITH SPECIFICATIONS, AND WITH GENERAL REQUIREMENTS OF ASTM C840. PRIOR TO COMMENCEMENT OF FRAMING INSTALLATION SUBMIT COORDINATION DRAWINGS INDICATING PROPOSED LOCATIONS OF ALL CONTROL JOINTS, AS SPECIFIED.



TMP ARCHITECTURE INC
259 EAST MICHIGAN AVE., SUITE 107
KALAMAZOO - MICHIGAN 49007
PH - 269.327.0077, FX - 269.327.8090
EM - INFO@TMP-ARCHITECTURE.COM

REGISTRATION SEAL

CONSULTANT

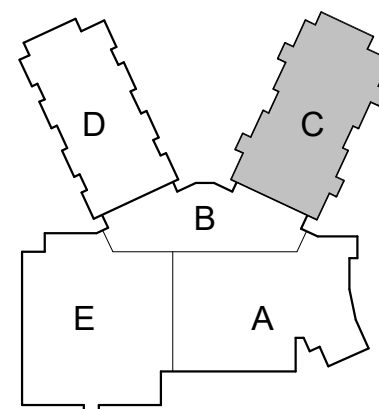
PROJECT TITLE

New Elementary School

Schoolcraft Community Schools
SCHOOLCRAFT, MI

DRAWING TITLE

First Floor Reflected Ceiling Plan - Zone 'C'



KEYPLAN

ISSUE DATES

03/30/22	BULLETIN #10
10/25/21	ASB #3
05/13/21	100% CONSTRUCTION DOCUMENTS
DATE:	ISSUED FOR:

DRAWN	MN
CHECKED	FJG
APPROVED	FJG

PROJECT NO.

20015

DRAWING NO.

A2.1C

LED SQUARE SUSPENDED LIGHT

LED PENDANT LIGHT
(2x2' / 4x4' / 5x5')

LED PENDANT LIGHT

RECESSED LED TROFFER
(2x4' / 2x2' / 1x4')

RECESSED LED TROFFER
(2x4' / 2x2' / 1x4')

*

LED PENDANT LIGHT

SURFACE MOUNTED LINEAR LED FIXTURE

PENDANT MOUNTED LINEAR LED FIXTURE

RECESSED LED DOWNLIGHT

EXIT SIGN

SPEAKER

FIRE / LIFE SAFETY FIXTURES: SEE ELECTRICAL, FIRE PROTECTION, PLUMBING, AND TECHNOLOGY DRAWINGS & SPECIFICATIONS

MECHANICAL EQUIPMENT / FIXTURES - SEE MECHANICAL DRAWINGS & SPECIFICATIONS

SUPPLY DIFFUSER

RETURN-AIR / EXHAUST GRILLE

CEILING KEY

GYPSUM BOARD (PAINTED)

24" x 24" SUSPENDED LAY-IN ACOUSTICAL CEILING

EXPOSED CONSTRUCTION (PAINTED UOI)

ACOUSTICAL BAFFLE

CEILING LEGEND

ROOM/CEILING TAGS

ROOM NAME AND NUMBER PLUS GENERAL CEILING FINISH AND HEIGHT UNLESS OTHERWISE NOTED

CLASSROOM

F101

ACT

9'-0"

ROOM NAME

ROOM NUMBER

CEILING FINISH ABBREVIATION (SEE BELOW)

CEILING HEIGHT (AFF)

CEILING FINISH TAG

SPECIFIC FINISH/HEIGHT WHERE VARYING FROM GENERAL ROOM/CEILING TAGS.

GYP-PTD

9'-0"

CEILING FINISH ABBREVIATIONS

AP-1

ACT-1

ACT-2

ACT-3

GYP-PTD

BNR-TYPE*

DEFS

GYP-PTD

GYP-EP

MDF

MP

OCMC

PTD

RCP

ACOUSTICAL BAFFLE PANEL - SUSPENDED

ACOUSTICAL LAY-IN CEILING TILE

ACOUSTICAL LAY-IN CEILING TILE

ACOUSTICAL LAY-IN CEILING TILE

EXPOSED CONSTRUCTION - PAINTED

FABRIC BANNERS

DIRECT APPLIED EXTERIOR FINISH SYSTEM

GYPSUM BOARD - PAINTED

GYPSUM BOARD - EPOXY PAINTED

MDF PANELS

MDF PANELS

MDF PANELS

OPEN CELL METAL CEILING

PAINTED

RADIANT CEILING PANELS RE MECHANICAL DRAWINGS

NOTES

1. SEE FINISH PLANS FOR INFORMATION ON ROOM FINISHES.

2. SEE ARCHITECTURAL PLANS AND SPECIFICATIONS FOR ADDITIONAL INFORMATION ON MATERIALS AND CONSTRUCTION.

3. WHERE EXPOSED CONSTRUCTION IS INDICATED TO BE PAINTED, THIS SHALL INCLUDE ALL STRUCTURAL MEMBERS, NON-CELLULAR ROOF/FLOOR DECK, CELLULAR ROOF/FLOOR DECK DUCTWORK, DIFFUSERS, GRILLES, PIPING, SUSPENDED EQUIPMENT, CONDUITS, ETC. (U.O.N.).

WALL FIRE RATING LEGEND

1-HOUR FIRE PARTITIONS FOR STORAGE & UTILITY ROOMS

1-HOUR FIRE BARRIER FOR EXIT ENCLOSURES

1-HOUR FIRE BARRIER FOR ELEVATOR HOISTWAYS

1-HOUR SMOKE AND FIRE BARRIER

SMOKE PARTITION FOR EGRESS CORRIDORS

REFLECTED CEILING GENERAL NOTES

1. SEE ELECTRICAL DRAWINGS FOR FIXTURE TYPES. SEE ELECTRICAL AND MECHANICAL DRAWINGS FOR ADDITIONAL INFORMATION PERTAINING TO ELECTRICAL AND MECHANICAL WORK.

2. COORDINATE SIZE AND LOCATION OF ALL ACCESS PANELS WITH TRADE. REQUIRE THE SAME. ACCESS PANELS ARE SPECIFIED ARCHITECTURALLY BUT ARE REQUIRED TO BE PROVIDED BY TRADE. SPOT ALL LOCATIONS WITHIN FIXED GYPSUM BOARD CEILINGS AND RECEIVE APPROVAL FROM THE ARCHITECT'S FIELD REPRESENTATIVE BEFORE PLACEMENT.

3. COORDINATE CEILING SUSPENSION SYSTEMS WITH OTHER CEILING SPACE EQUIPMENT SUPPORTS.

4. ALL FIRE WALLS, FIRE BARRIERS, FIRE PARTITIONS, SMOKE BARRIERS AND SMOKE PARTIONS (ABOVE ACCESSIBLE CEILINGS) SHALL BE MARKED EVERY 30'-0" HORIZONTALLY AND WITHIN 15'-0" OF ENDS OF WALLS. THIS AND/OR SMOKE BARRIER - PROTECT ALL OPENINGS. REFER TO CURRENT BUILDING CODE FOR LETTERING HEIGHT, STROKE AND CONTRAST.

5. ALL GYPSUM BOARD FASCIAE AT SOFFITS, ADJACENT TO LAY-IN CEILINGS, SHALL EXTEND 8" MINIMUM ABOVE LAY-IN CEILINGS.

6. PROVIDE WOOD BLOCKING ABOVE GYPSUM BOARD CEILINGS, AS REQUIRED FOR MISCELLANEOUS SUSPENDED ITEMS (e.g. CURTAIN TRACKS, WINDOW SHADES, ACOUSTICAL BAFFLES, ETC.).

7. SEE LIFE SAFETY PLANS FOR DAMPERING REQUIREMENTS.

8. INSTALL CONTROL JOINTS IN GYPSUM BOARD AND METAL STUD-FRAMED PARTITIONS, WALLS, CEILINGS, BULKHEADS, FASCIAE AND SOFFITS IN COMPLIANCE WITH SPECIFICATIONS, AND WITH GENERAL REQUIREMENTS OF ASTM C840. PRIOR TO COMMENCEMENT OF FRAMING INSTALLATION SUBMIT COORDINATION DRAWINGS INDICATING PROPOSED LOCATIONS OF ALL CONTROL JOINTS, AS SPECIFIED.

T M P ARCHITECTURE I N C
259 EAST MICHIGAN AVE., SUITE 107
KALAMAZOO - MICHIGAN - 49007
PH - 269.327.0077, FX - 269.327.8090
EM - INFO@TMP-ARCHITECTURE.COM

REGISTRATION SEAL

CONSULTANT

PROJECT TITLE
New Elementary School

**Schoolcraft Community Schools
SCHOOLCRAFT, MI**

DRAWING TITLE
First Floor Reflected Ceiling Plan - Zone 'D'

KEYPLAN

ISSUE DATES

10/29/21	ASH #3
05/13/21	100% CONSTRUCTION DOCUMENTS

DATE: ISSUED FOR:

DRAWN: MN

CHECKED: FJG

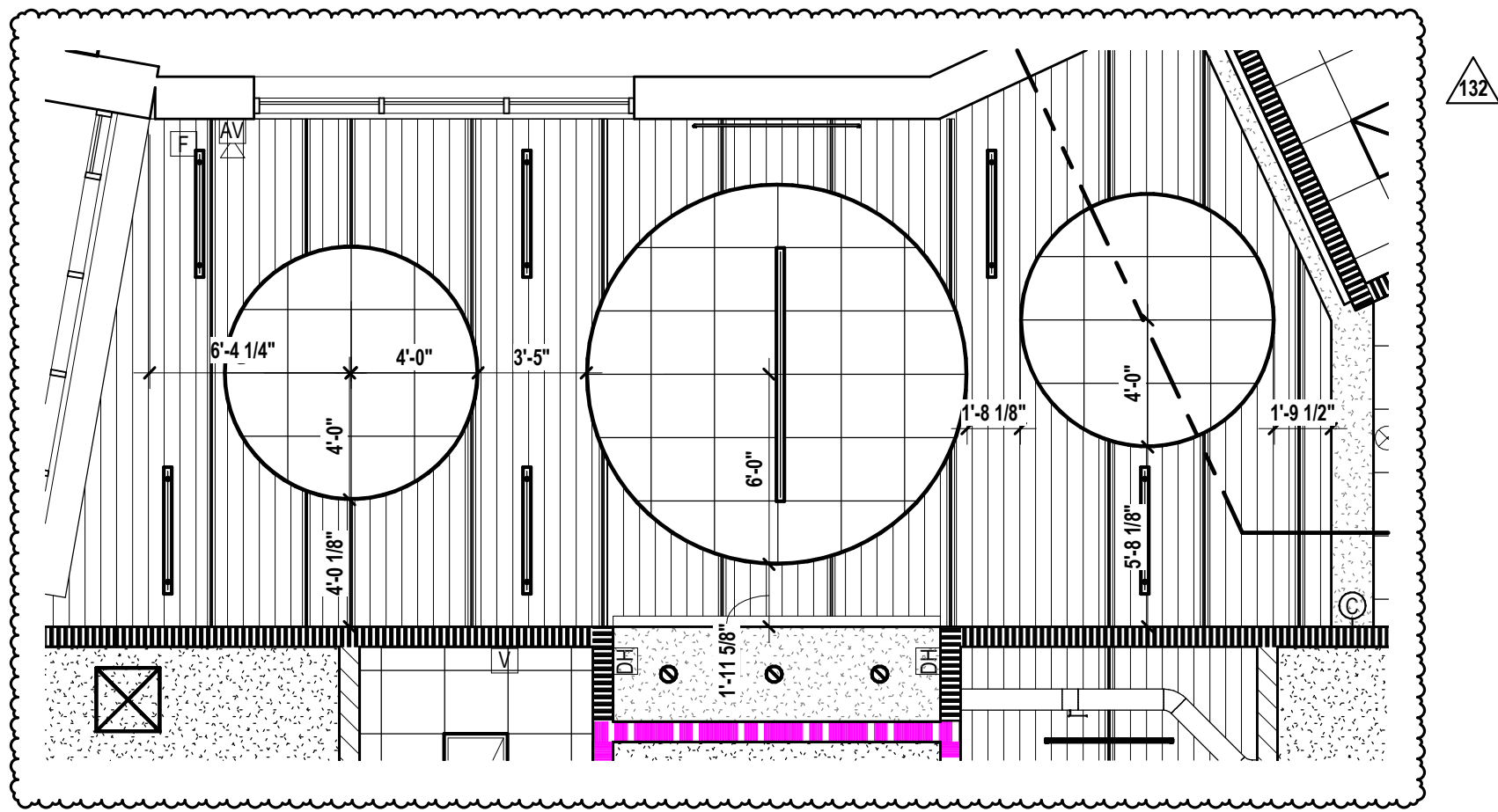
APPROVED: FJG

PROJECT NO.

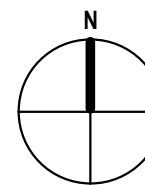
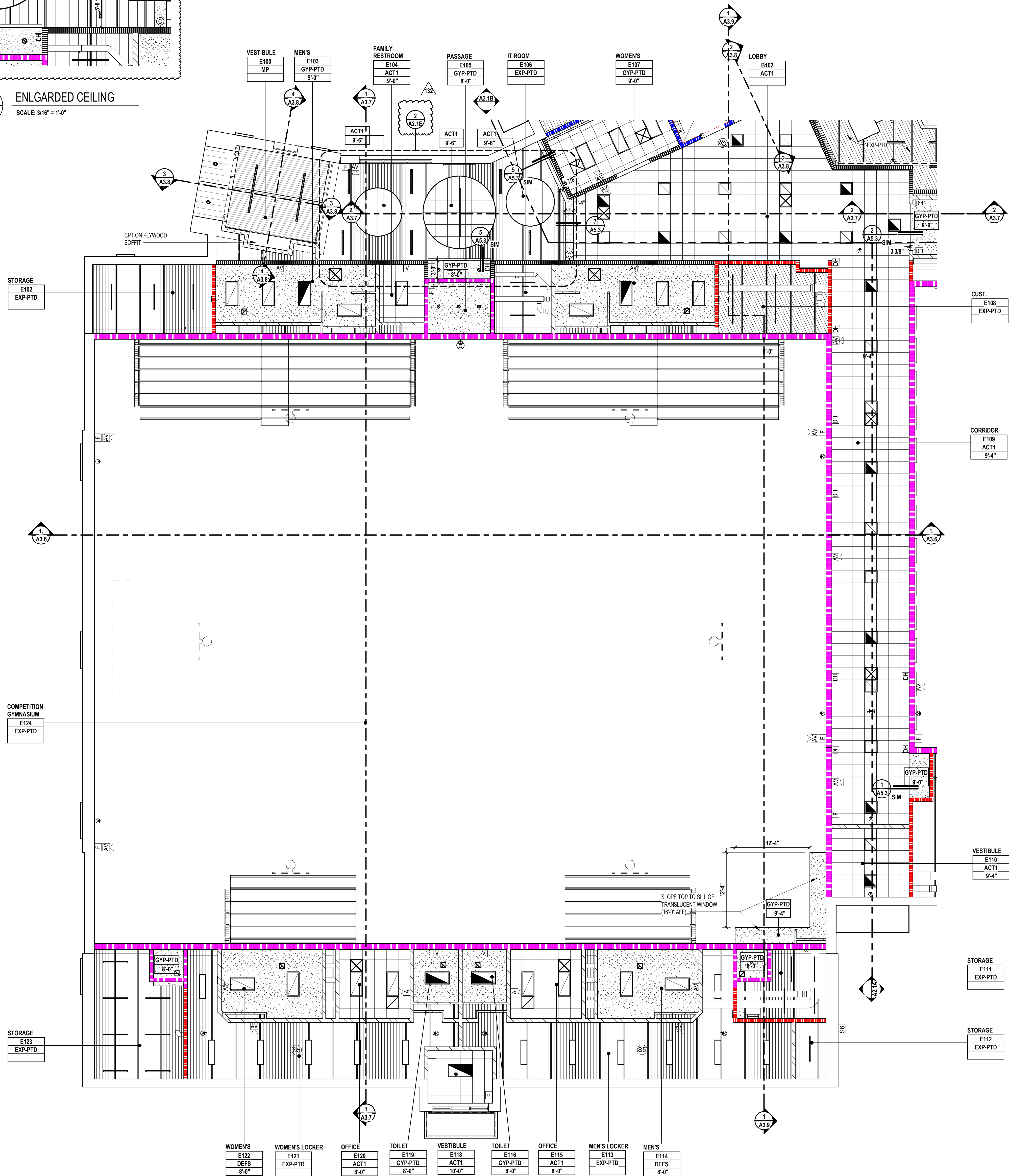
20015

DRAWING NO.

A2.1D



2 ENLARGED CEILING
A2.1B
SCALE: 3/16" = 1'-0"



FIRST FLOOR REFLECTED CEILING PLAN - ZONE 'E'
SCALE: 1/8" = 1'-0"

FIXTURE LEGEND

- LED SQUARE SUSPENDED LIGHT
- LED PENDANT LIGHT (2x2' / 4x4' / 5x5')
- LED PENDANT LIGHT
- RECESSED LED TROFFER (2x4' / 2x2' / 1x4')
- RECESSED LED TROFFER (2x4' / 2x2' / 1x4')
- LED PENDANT LIGHT
- SURFACE MOUNTED LINEAR LED FIXTURE
- PENDANT MOUNTED LINEAR LED FIXTURE
- RECESSED LED DOWNLIGHT
- EXIT SIGN
- SPEAKER

FIRE / LIFE SAFETY FIXTURES: SEE ELECTRICAL, FIRE PROTECTION, PLUMBING, AND TECHNOLOGY DRAWINGS & SPECIFICATIONS

MECHANICAL EQUIPMENT / FIXTURES - SEE MECHANICAL DRAWINGS & SPECIFICATIONS

- SUPPLY DIFFUSER
- RETURN-AIR / EXHAUST GRILLE

CEILING KEY

- GYPSUM BOARD (PAINTED)
- 24" x 24" SUSPENDED LAY-IN ACOUSTICAL CEILING
- EXPOSED CONSTRUCTION (PAINTED UOI)
- ACOUSTICAL BAFFLE

CEILING LEGEND

ROOM/CEILING TAGS	CEILING FINISH TAG
ROOM NAME AND NUMBER PLUS GENERAL CEILING FINISH AND HEIGHT UNLESS OTHERWISE NOTED	SPECIFIC FINISH/HEIGHT WHERE VARYING FROM GENERAL ROOM/CEILING TAGS.
CLASSROOM	ROOM NAME
F101	ROOM NUMBER
ACT	CEILING FINISH ABBREVIATION (SEE BELOW)
9'-0"	CEILING HEIGHT (AFF)
	GYP-PTD
	9'-0"

CEILING FINISH ABBREVIATIONS

AP-1	ACOUSTICAL BAFFLE PANEL - SUSPENDED
ACT-1	ACOUSTICAL LAY-IN CEILING TILE
ACT-2	ACOUSTICAL LAY-IN CEILING TILE
ACT-3	ACOUSTICAL LAY-IN CEILING TILE
GYP-PTD	EXPOSED CONSTRUCTION - PAINTED
BNR-TYPE*	FABRIC BANNERS
DEFS	DIRECT APPLIED EXTERIOR FINISH SYSTEM
GYP-PTD	GYPSUM BOARD - PAINTED
GYP-EP	GYPSUM BOARD - EPOXY PAINTED
MDP	MDP PANELS
MP	METAL PANELS
OCMC	OPEN CELL METAL CEILING
PTD	PAINTED
RCP	RADIANT CEILING PANELS RE-MECHANICAL DRAWINGS

NOTES:
1. SEE FINISH PLANS FOR INFORMATION ON ROOM FINISHES.
2. SEE ARCHITECTURAL PLANS AND SPECIFICATIONS FOR ADDITIONAL INFORMATION ON MATERIALS AND CONSTRUCTION.
3. WHERE EXPOSED CONSTRUCTION IS INDICATED TO BE PAINTED, THIS SHALL INCLUDE ALL STRUCTURAL MEMBERS, NON-CELLULAR ROOF/FLOOR DECK, CELLULAR ROOF/FLOOR DECK, DUCTWORK, DIFFUSERS, GRILLES, PIPING, SUSPENDED EQUIPMENT, CONDUITS, ETC. (U.O.I.).

WALL FIRE RATING LEGEND

- 1-HOUR FIRE PARTITIONS FOR STORAGE & UTILITY ROOMS
- 1-HOUR FIRE BARRIER FOR EXIT ENCLOSURES
- 1-HOUR FIRE BARRIER FOR ELEVATOR HOISTWAYS
- 1-HOUR SMOKE AND FIRE BARRIER
- SMOKE PARTITION FOR EGRESS CORRIDORS

REFLECTED CEILING GENERAL NOTES

- SEE ELECTRICAL DRAWINGS FOR FIXTURE TYPES. SEE ELECTRICAL AND MECHANICAL DRAWINGS FOR ADDITIONAL INFORMATION PERTAINING TO ELECTRICAL AND MECHANICAL WORK.
- COORDINATE SIZE AND LOCATION OF ALL ACCESS PANELS WITH TRADE. REQUIRE THE SAME. ACCESS PANELS ARE SPECIFIED ARCHITECTURALLY BUT ARE REQUIRED TO BE PROVIDED BY TRADE. SPOT ALL LOCATIONS WITHIN FIXED GYPSUM BOARD CEILINGS AND RECEIVE APPROVAL FROM THE ARCHITECT'S FIELD REPRESENTATIVE BEFORE PLACEMENT.
- COORDINATE CEILING SUSPENSION SYSTEMS WITH OTHER CEILING SPACE EQUIPMENT SUPPORTS.
- ALL FIRE WALLS, FIRE BARRIERS, FIRE PARTITIONS, SMOKE BARRIERS AND SMOKE PARTITIONS (ABOVE ACCESSIBLE CEILINGS) SHALL BE MARKED EVERY 30'-0" HORIZONTALLY AND WITHIN '10'-0" OF ENDS OF WALLS. THIS INCLUDES SMOKE BARRIER. PROTECT ALL OPENINGS. REFER TO CURRENT BUILDING CODE FOR LETTERING HEIGHT, STROKE AND CONTRAST.
- ALL GYPSUM BOARD FASCIAE AT SOFFITS, ADJACENT TO LAY-IN CEILINGS, SHALL EXTEND 8" MINIMUM ABOVE LAY-IN CEILINGS.
- PROVIDE WOOD BLOCKING ABOVE GYPSUM BOARD CEILINGS, AS REQUIRED FOR MISCELLANEOUS SUSPENDED ITEMS (e.g. CURTAIN TRACKS, WINDOW SHADES, ACOUSTICAL BAFFLES, ETC.).
- SEE LIFE SAFETY PLANS FOR DAMPERING REQUIREMENTS.
- INSTALL CONTROL JOINTS IN GYPSUM BOARD AND METAL STUD-FRAMED PARTITIONS, WALLS, CEILINGS, BULKHEADS, FASCIAE AND SOFFITS IN COMPLIANCE WITH SPECIFICATIONS, AND WITH GENERAL REQUIREMENTS OF ASTM C840. PRIOR TO COMMENCEMENT OF FRAMING INSTALLATION SUBMIT COORDINATION DRAWINGS INDICATING PROPOSED LOCATIONS OF ALL CONTROL JOINTS, AS SPECIFIED.



TMP ARCHITECTURE INC
259 EAST MICHIGAN AVE., SUITE 107
KALAMAZOO - MICHIGAN 49007
PH: 269.327.0077, FX: 269.327.8090
EM: INFO@TMP-ARCHITECTURE.COM

REGISTRATION SEAL

CONSULTANT

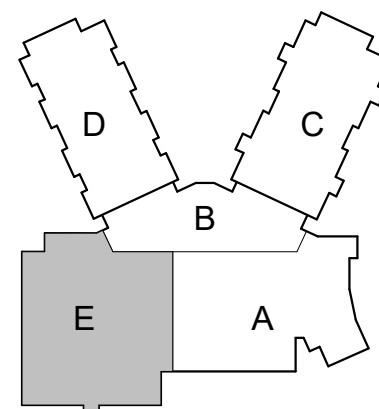
PROJECT TITLE

New Elementary School

Schoolcraft Community Schools
SCHOOLCRAFT, MI

DRAWING TITLE

First Floor Reflected Ceiling Plan - Zone 'E'



KEYPLAN

ISSUE DATES

04/21/22	RFI #132
03/16/22	BULLETIN #9
09/27/21	ADDENDUM #1
05/13/21	100% CONSTRUCTION DOCUMENTS

DATE: ISSUED FOR:

DRAWN: MN

CHECKED: FJG

APPROVED: FJG

PROJECT NO.

20015

DRAWING NO.

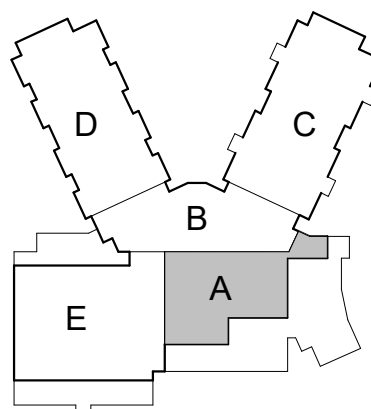
A2.1E

CONSULTANT

New Elementary School

Schoolcraft Community Schools
SCHOOLCRAFT, MI

Second Floor Reflected Ceiling Plan - Zone 'A'



KEYPLAN

ISSUE DATES

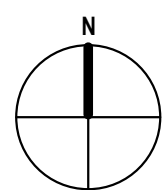
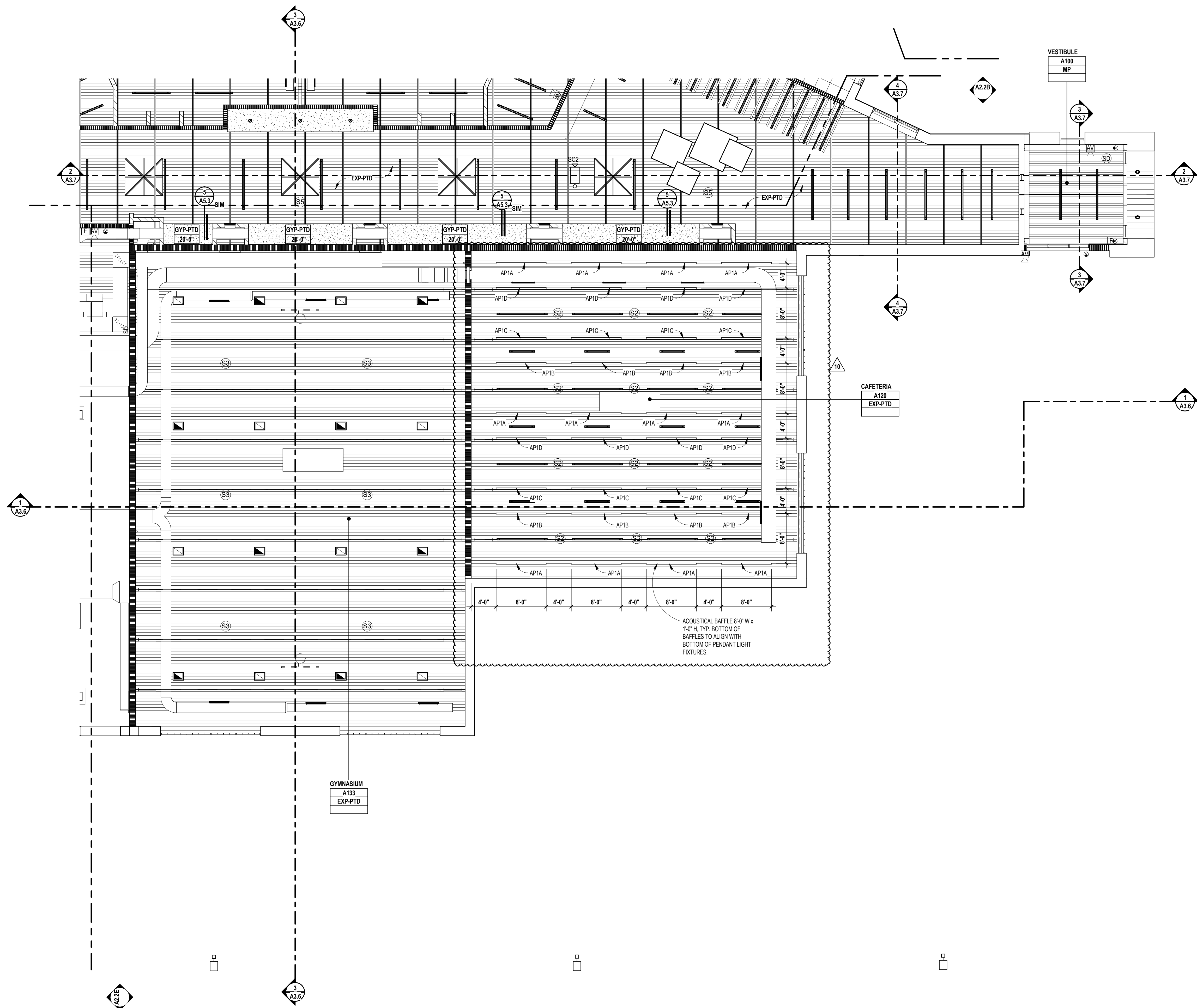
[illegible]

03/30/22	BULLETIN #10
10/25/21	ASI #3
05/13/21	100% CONSTRUCTION DOCUMENTS
DATE:	ISSUED FOR:

DRAWN	MN
CHECKED	FJG
APPROVED	FJG

20015

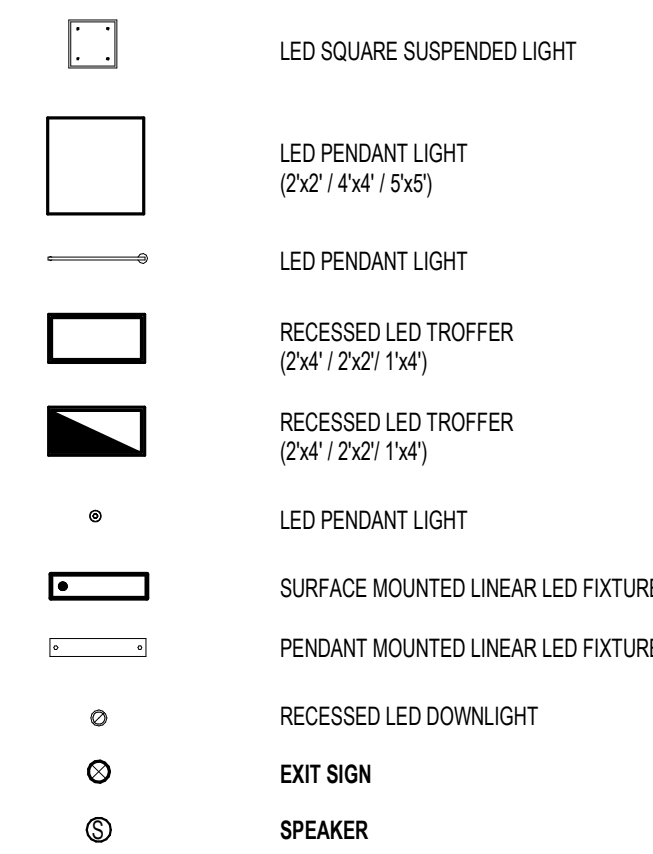
A2.2A



SECOND FLOOR REFLECTED CEILING PLAN - ZONE 'A'

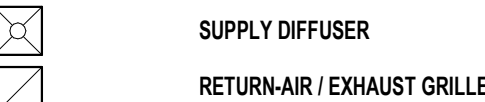
SCALE: 1/8" = 1'-0"

FIXTURE LEGEND

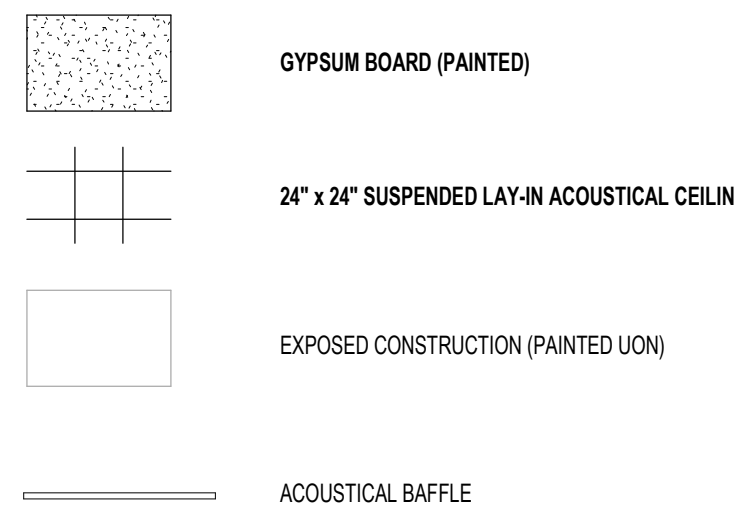


FIRE / LIFE SAFETY FIXTURES: SEE ELECTRICAL, FIRE PROTECTION, PLUMBING, AND TECHNOLOGY DRAWINGS & SPECIFICATIONS

MECHANICAL EQUIPMENT / FIXTURES - SEE MECHANICAL DRAWINGS & SPECIFICATIONS



CEILING KEY



CEILING LEGEND

ROOM/CEILING TAGS		CEILING FINISH TAG	
ROOM NAME AND NUMBER PLUS GENERAL CEILING FINISH AND HEIGHT UNLESS OTHERWISE NOTED		SPECIFIC FINISH/HEIGHT WHERE VARYING FROM GENERAL ROOM/CEILING TAGS.	
CLASSROOM	← ROOM NAME		
F101	← ROOM NUMBER		
ACT	← CEILING FINISH ABBREVIATION (SEE BELOW)		GYP-PTD
9'-0"	← CEILING HEIGHT (AFF)		9'-0"





CEILING FINISH ABBREVIATIONS

AP 1	ACOUSTICAL BAFFLE PANEL - SUSPENDED
ACT 1	ACOUSTICAL LAY-IN CEILING TILE
ACT-2	ACOUSTICAL LAY-IN CEILING TILE
ACT-3	ACOUSTICAL LAY-IN CEILING TILE
EXP-PTD	EXPOSED CONSTRUCTION - PAINTED
BNR"TYPE"	FABRIC BANNERS
DEFS	DIRECT APPLIED EXTERIOR FINISH SYSTEM
GYP-PTD	GYPSUM BOARD - PAINTED
GYP-EP	GYPSUM BOARD - EPOXY PAINTED
MDF	MDF PANELS
MP	METAL PANELS
OCMC	OPEN CELL METAL CEILING
PTD	PAINTED
RPC	RADIANT CEILING PANELS RE-MECHANICAL DRAWINGS

NOTES

1. SEE FINISH PLANS FOR INFORMATION ON ROOM FINISHES.
2. SEE ARCHITECTURAL PLANS AND SPECIFICATIONS FOR ADDITIONAL INFORMATION ON MATERIALS AND CONSTRUCTION.
3. WHERE EXPOSED CONSTRUCTION IS INDICATED TO BE PAINTED, THIS SHALL INCLUDE ALL STRUCTURAL MEMBERS, NON-CELLULAR ROOF/FLOOR DECK, CELLULAR ROOF/FLOOR DECK DUCTWORK, DIFFUSERS, GRILLES, PIPING, SUSPENDED EQUIPMENT, CONDUITS, ETC. (U.O.N.).

WALL FIRE RATING LEGEND

	1-HOUR FIRE PARTITIONS FOR STORAGE & UTILITY ROOMS
	1-HOUR FIRE BARRIER FOR EXIT ENCLOSURES
	1-HOUR FIRE BARRIER FOR ELEVATOR HOISTWAYS
	1-HOUR SMOKE AND FIRE BARRIER
	SMOKE PARTITION FOR EGRESS CORRIDORS

REFLECTED CEILING GENERAL NOTES

1. SEE ELECTRICAL DRAWINGS FOR FIXTURE TYPES. SEE ELECTRICAL AND MECHANICAL DRAWINGS FOR ADDITIONAL INFORMATION PERTAINING TO ELECTRICAL AND MECHANICAL WORK.
2. COORDINATE SIZE AND LOCATION OF ALL ACCESS PANELS WITH TRADES REQUIRING THE SAME. ACCESS PANELS ARE REQUIRED ARCHITECTURALLY BUT ARE REQUIRED TO BE PROVIDED BY TRADE. SPOT ALL LOCATIONS WITH FIXED GYPSUM BOARD CEILINGS AND RECEIVE APPROVAL FROM THE ARCHITECT'S FIELD REPRESENTATIVE BEFORE PLACEMENT.
3. COORDINATE CEILING SUSPENSION SYSTEMS WITH OTHER CEILING SPACE EQUIPMENT SUPPORTS.
4. ALL FIRE WALLS, FIRE BARRIERS, FIRE PARTITIONS, SMOKE BARRIERS AND SMOKE PARTITIONS ARE ACCESSIBLE CEILINGS SHALL BE MARKED EVERY 8" BY HORIZONTALLY AND WITHIN 15" OF END WALLS. "FIRE AND/OR SMOKE BARRIER, PROTECT ALL OPENINGS. REFER TO CURRENT BUILDING CODE FOR LETTERING HEADING, CONTRAST AND CONTRAST.
5. ALL GYPSUM BOARD CASING AT SOFFITS, ADJUNCT TO LOYAL CEILINGS, SHALL EXTEND 8" MINIMUM ABOVE LAY-IN CEILING.
6. PROVIDE WOOD BLOCKING ABOVE GYPSUM BOARD CEILINGS, AS REQUIRED FOR IRREGULARLY SUSPENDED ITEMS (E.G. CERTAIN TRACKS, WINDOW SHADES, ACoustICAL Baffles, ETC.).
7. SEE LIFE SAFETY PLAN FOR DAMPING REQUIREMENTS.
8. INSTALL CONTROL JOINTS IN GYPSUM BOARD AND MELT, STUD-FRAMED PARTITIONS, WALLS, BULKHEADS, BULKHEADS, FACED AND SPOKE IN COMPLIANCE WITH SPECIFICATIONS, AND WITH GENERAL REQUIREMENTS OF ASTM DRAWINGS. PRIOR TO COMMENCEMENT OF FRAMING, SUBMIT TO ARCHITECT FOR COMMENTS AND RECORDS INDICATING PROPOSED LOCATIONS OF ALL CONTROL JOINTS, AS SPECIFIED.

REGISTRATION SEAL

CONSULTANT

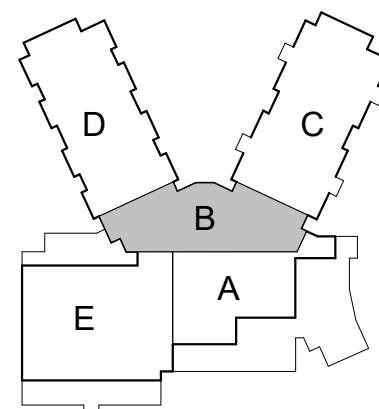
PROJECT TITLE

New Elementary School

Schoolcraft Community Schools
SCHOOLCRAFT, MI

DRAWING TITLE

Second Floor Reflected Ceiling Plan - Zone 'B'



KEYPLAN

ISSUE DATES

[illegible]

DRAWN

CHECKED

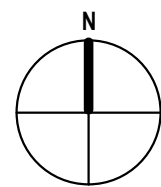
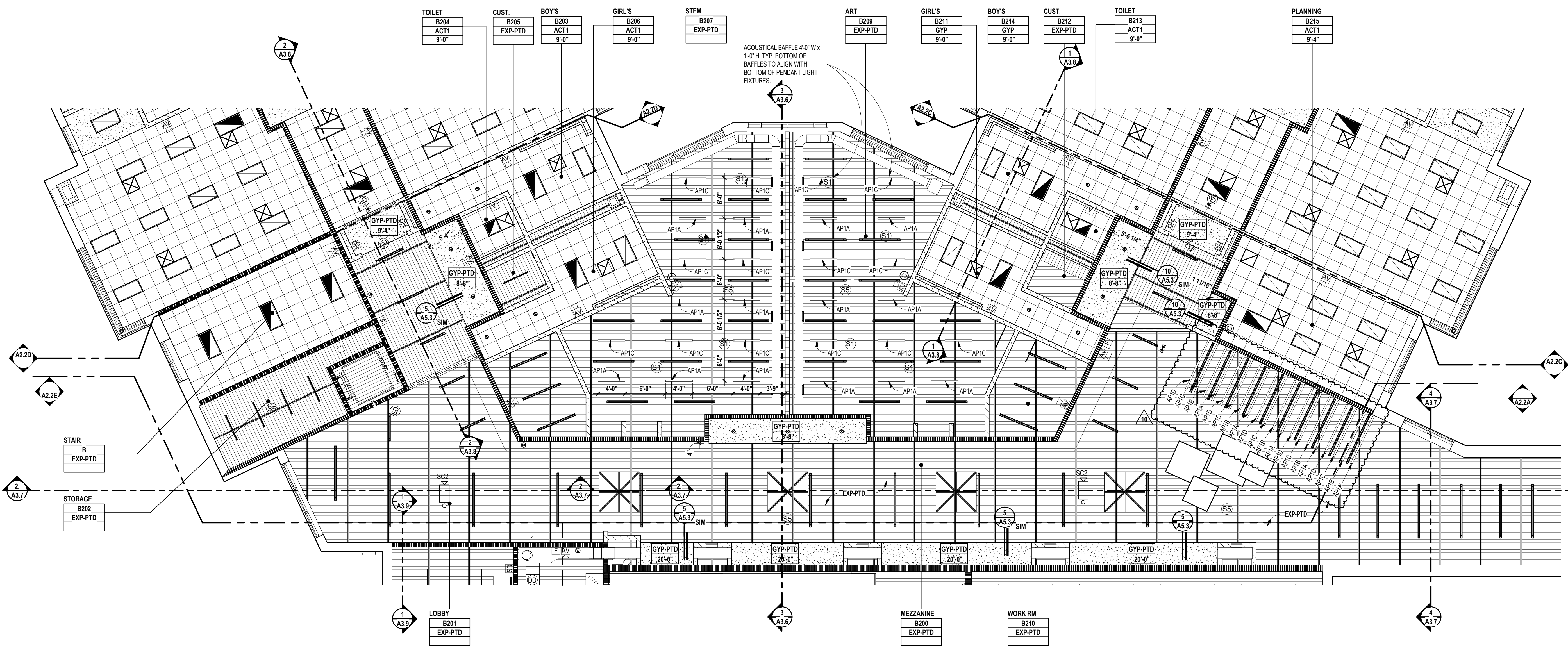
APPROVED

PROJECT NO.

20015

DRAWING NO

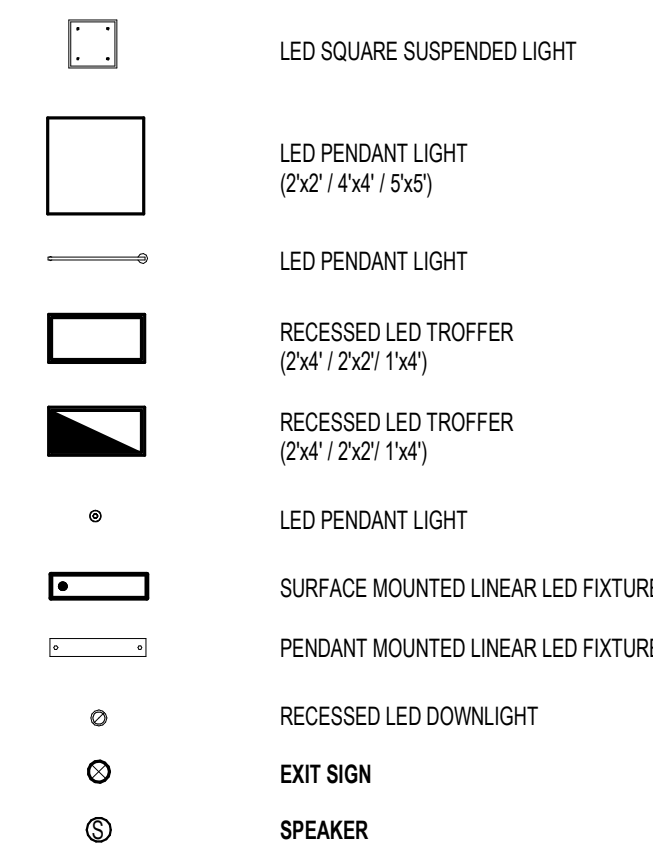
A2.2B



SECOND FLOOR REFLECTED CEILING PLAN - ZONE 'B'

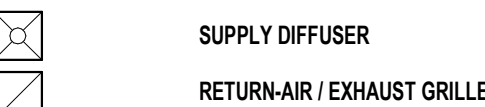
SCALE: 1/8" = 1'-0"

FIXTURE LEGEND

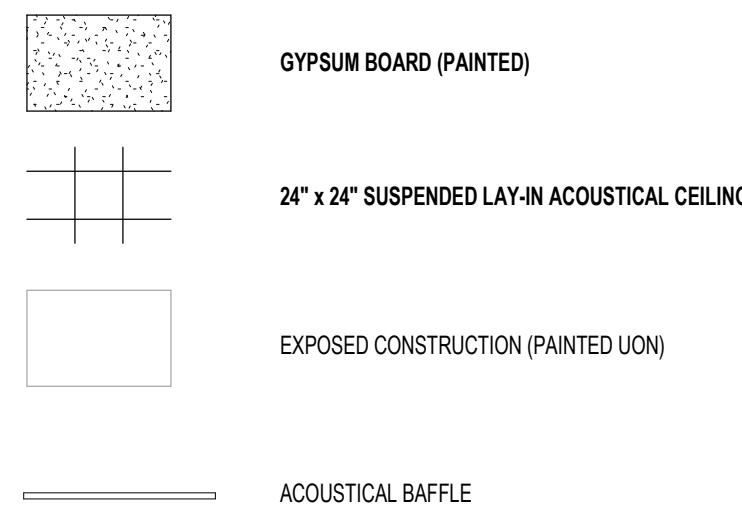


FIRE / LIFE SAFETY FIXTURES: SEE ELECTRICAL, FIRE PROTECTION, PLUMBING, AND TECHNOLOGY DRAWINGS & SPECIFICATIONS

MECHANICAL EQUIPMENT / FIXTURES - SEE MECHANICAL DRAWINGS & SPECIFICATIONS



CEILING KEY



CEILING LEGEND

ROOM/CEILING TAGS		CEILING FINISH TAG	
ROOM NAME AND NUMBER PLUS GENERAL CEILING FINISH AND HEIGHT UNLESS OTHERWISE NOTED		SPECIFIC FINISH/HEIGHT WHERE VARYING FROM GENERAL ROOM/CEILING TAGS.	
CLASSROOM	← ROOM NAME		
F101	← ROOM NUMBER		
ACT	← CEILING FINISH ABBREVIATION (SEE BELOW)		GYP-PTD
9'-0"	← CEILING HEIGHT (AFF)		9'-0"

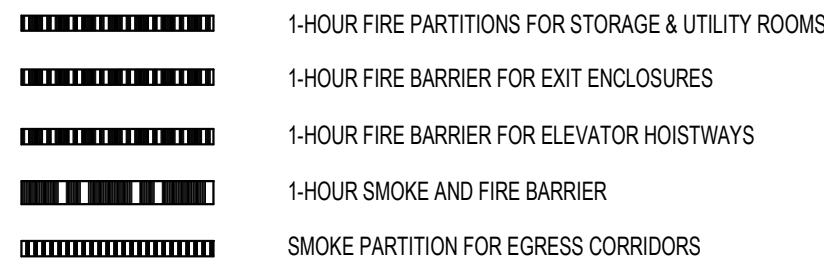
CEILING FINISH ABBREVIATIONS

AP 1	ACOUSTICAL BAFFLE PANEL - SUSPENDED
ACT 1	ACOUSTICAL LAY-IN CEILING TILE
ACT-2	ACOUSTICAL LAY-IN CEILING TILE
ACT-3	ACOUSTICAL LAY-IN CEILING TILE
EXP-PTD "BUNKY"™	EXPOSED CONSTRUCTION - FINISHED FABRIC BANNERS
DEFS	DIRECT APPLIED URETHANE FINISH SYSTEM
GYP-PTD	GYPSUM BOARD - PAINTED
GYP-EP	GYPSUM BOARD - EPOXY PAINTED
MDF	MDF PANELS
MP	METAL PANELS
OOCM	OCEANIC METAL CEILING
PTD	PAINTED
RCP	RADIANT CEILING PANELS RE/MECHANICAL DRAWINGS

NOTES

1. SEE FINISH PLANS FOR INFORMATION ON ROOM FINISHES.
2. SEE ARCHITECTURAL PLANS AND SPECIFICATIONS FOR ADDITIONAL INFORMATION ON MATERIALS AND CONSTRUCTION.
3. WHERE EXPOSED CONSTRUCTION IS INDICATED TO BE PAINTED, THIS SHALL INCLUDE ALL STRUCTURAL MEMBERS, NON-CELLULAR ROOF/FLOOR DECK, CELLULAR ROOF/FLOOR DECK DUCTWORK, DIFFUSERS, GRILLES, PIPING, SUSPENDED EQUIPMENT, CONDUITS, ETC. (U.O.N.)

WALL FIRE RATING LEGEND



REFLECTED CEILING GENERAL NOTES

1. SEE ELECTRICAL DRAWINGS FOR FIXTURE TYPES. SEE ELECTRICAL AND MECHANICAL DRAWINGS FOR ADDITIONAL INFORMATION PERTAINING TO ELECTRICAL AND MECHANICAL WORK.
2. COORDINATE SIZE AND LOCATION OF ALL ACCESS PANELS WITH TRADES REQUIRING THE SAME. ACCESS PANELS ARE REQUIRED ARCHITECTURALLY BUT ARE REQUIRED TO BE PROVIDED BY TRADE. SPOT ALL LOCATIONS WITH FIXED GYPSUM BOARD CEILINGS AND RECEIVE APPROVAL FROM THE ARCHITECT'S FIELD REPRESENTATIVE BEFORE PLACEMENT.
3. COORDINATE CEILING SUSPENSION SYSTEMS WITH OTHER CEILING SPACE EQUIPMENT SUPPORTS.
4. ALL FIRE WALLS, FIRE BARRIERS, FIRE PARTITIONS, SMOKE BARRIERS AND SMOKE PARTITIONS ARE ACCESSIBLE CEILINGS SHALL BE MARKED EVERY 8" BY HORIZONTALLY AND WITHIN 15" OF END WALLS. "FIRE AND/OR SMOKE BARRIER, PROTECT ALL OPENINGS. REFER TO CURRENT BUILDING CODE FOR LETTERING HEADING, STYLE AND CONTRAST.
5. ALL GYPSUM BOARD CASING AT SOFFITS, ADJACENT TO LOYAL CEILINGS, SHALL EXTEND 8" MINIMUM ABOVE LAY-IN CEILING.
6. PROVIDE WOOD BLOCKING ABOVE GYPSUM BOARD CEILINGS, AS REQUIRED FOR IRREGULARLY SUSPENDED ITEMS (E.G. CERTAIN TRACKS, WINDOW SHADES, ACoustICAL Baffles, ETC.).
7. SEE LIFE SAFETY PLAN FOR DAMPING REQUIREMENTS.
8. INSTALL CONTROL JOINTS IN GYPSUM BOARD AND MELT, STUD-FRAMED PARTITIONS, WALLS, BULKHEADS, BULKHEADS, CASINGS AND SOFFITS IN COMPLIANCE WITH SPECIFICATIONS, AND WITH GENERAL REQUIREMENTS OF ASTM DRAWINGS. PRIOR TO COMMENCEMENT OF FRAMING, SUBMIT A SCHEDULE OF WORK AND A SET OF DRAWINGS INDICATING PROPOSED LOCATIONS OF ALL CONTROL JOINTS, AS SPECIFIED.

REGISTRATION SEAL

CONSULTANT

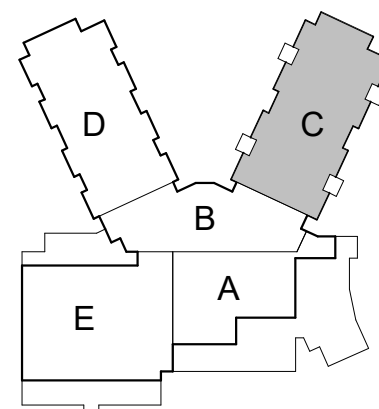
PROJECT TITLE

New Elementary School

Schoolcraft Community Schools
SCHOOLCRAFT, MI

DRAWING TITLE

Second Floor Reflected Ceiling Plan - Zone 'C'



KEYPLAN

ISSUE DATES

[illegible]

10/25/21	ASI #3
05/13/21	100% CONSTRUCTION DOCUMENTS
DATE:	ISSUED FOR:

DRAWN MN

CHECKED FJG

APPROVED FJG

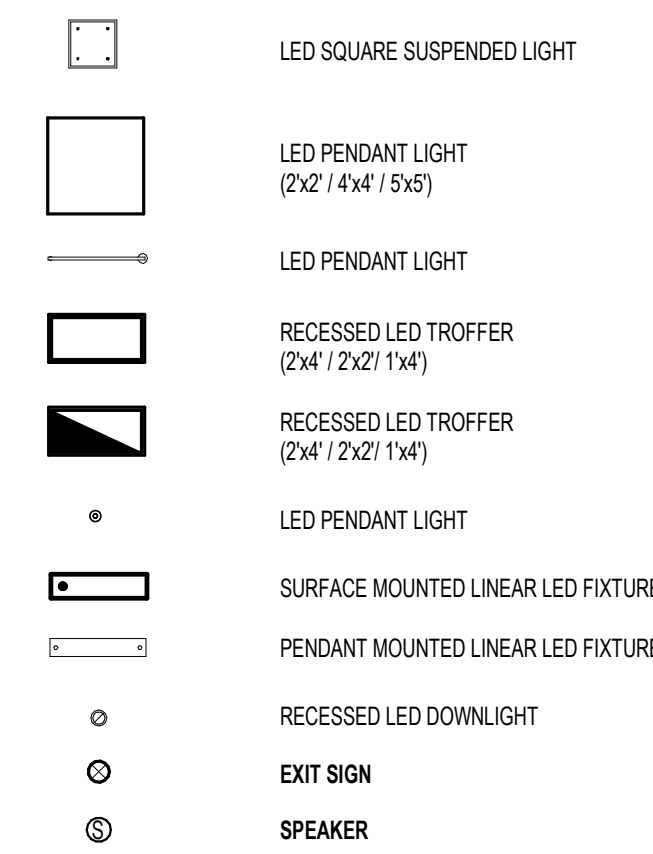
PROJECT NO.

20015

DRAWING NO

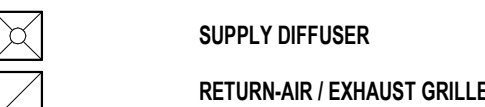
A2.2C

FIXTURE LEGEND

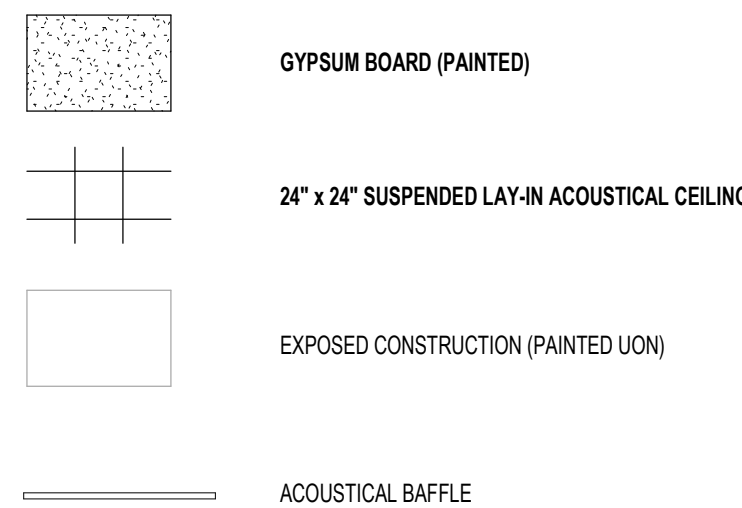


FIRE / LIFE SAFETY FIXTURES: SEE ELECTRICAL, FIRE PROTECTION, PLUMBING, AND TECHNOLOGY DRAWINGS & SPECIFICATIONS

MECHANICAL EQUIPMENT / FIXTURES - SEE MECHANICAL DRAWINGS & SPECIFICATIONS



CEILING KEY



CEILING LEGEND

ROOM/CEILING TAGS		CEILING FINISH TAG	
ROOM NAME AND NUMBER PLUS GENERAL CEILING FINISH AND HEIGHT UNLESS OTHERWISE NOTED		SPECIFIC FINISH/HEIGHT WHERE VARYING FROM GENERAL ROOM/CEILING TAGS.	
CLASSROOM	← ROOM NAME		
F101	← ROOM NUMBER		
ACT	← CEILING FINISH ABBREVIATION (SEE BELOW)		GYP-PTD
9'-0"	← CEILING HEIGHT (AFF)		9'-0"

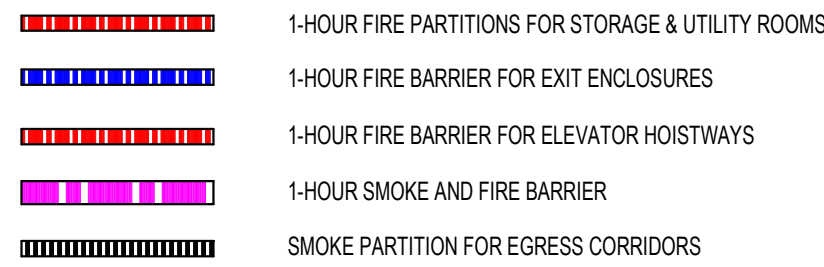
CEILING FINISH ABBREVIATIONS

AP 1	ACOUSTICAL BAFFLE PANEL - SUSPENDED
ACT 1	ACOUSTICAL LAY-IN CEILING TILE
ACT-2	ACOUSTICAL LAY-IN CEILING TILE
ACT-3	ACOUSTICAL LAY-IN CEILING TILE
EXP-PTD	EXPOSED CONSTRUCTION - FINISHED
"BKNCTYVE"	"FABRIC BURNERS"
DEFS	DIRECT APPLIED EXTERIOR FINISH SYSTEM
GYP-PTD	GYPSUM BOARD - PAINTED
GYP-EP	GYPSUM BOARD - EPOXY PAINTED
MDF	MDF PANELS
MP	METAL PANELS
OOCMC	OCEANIC METAL CEILING
PTD	PAINTED
RCP	RADIANT CEILING PANELS RE/MECHANICAL DRAWINGS

NOTES

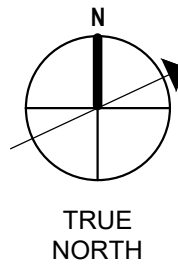
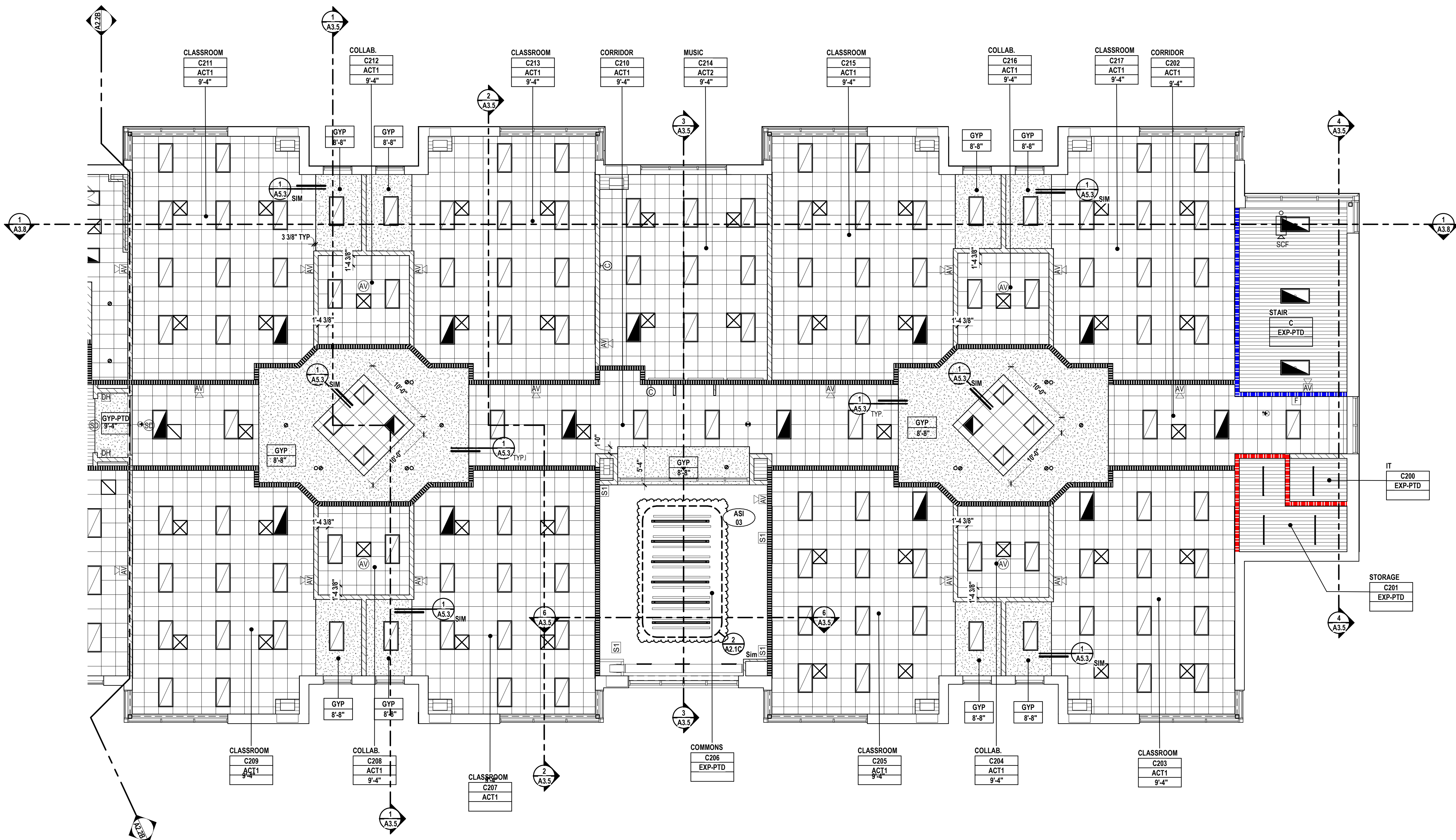
1. SEE FINISH PLANS FOR INFORMATION ON ROOM FINISHES.
2. SEE ARCHITECTURAL PLANS AND SPECIFICATIONS FOR ADDITIONAL INFORMATION ON MATERIALS AND CONSTRUCTION.
3. WHERE EXPOSED CONSTRUCTION IS INDICATED TO BE PAINTED, THIS SHALL INCLUDE ALL STRUCTURAL MEMBERS, NON-CELLULAR ROOF/FLOOR DECK, CELLULAR ROOF/FLOOR DECK, DUCTWORK, DIFFUSERS, GRILLES, PIPING, SUSPENDED EQUIPMENT, CONDUITS, ETC. (U.O.N.)

WALL FIRE RATING LEGEND



REFLECTED CEILING GENERAL NOTES

1. SEE ELECTRICAL DRAWINGS FOR FIXTURE TYPES. SEE ELECTRICAL AND MECHANICAL DRAWINGS FOR ADDITIONAL INFORMATION PERTAINING TO ELECTRICAL AND MECHANICAL WORK.
2. COORDINATE SIZE AND LOCATION OF ALL ACCESS PANELS WITH TRADES REQUIRING THE SAME. ACCESS PANELS ARE REQUIRED ARCHITECTURALLY BUT ARE REQUIRED TO BE PROVIDED BY TRADE. SPOT ALL LOCATIONS WITH FIELD GYPSUM BOARD CEILINGS AND RECEIVE APPROVAL FROM THE ARCHITECT'S FIELD REPRESENTATIVE BEFORE PLACEMENT.
3. COORDINATE CEILING SUSPENSION SYSTEMS WITH OTHER CEILING SPACE EQUIPMENT SUPPORTS.
4. ALL FIRE WALLS, FIRE BARRIERS, FIRE PARTITIONS, SMOKE BARRIERS AND SMOKE PARTITIONS ARE ACCESSIBLE CEILING SHALL BE MARKED EVERY 8" BY HORIZONTALLY AND WITHIN 15" OF END WALLS. "FIRE AND/OR SMOKE BARRIER, PROTECT ALL OPENINGS. REFER TO CURRENT BUILDING CODE FOR LETTERING HEIGHT, CONTRAST AND CONTRAST.
5. ALL GYPSUM BOARD CASING AT SOFFITS, ADJACENT TO DRY IN CEILINGS, SHALL EXTEND 8" MINIMUM ABOVE LAY-IN CEILING.
6. PROVIDE WOOD BLOCKING ABOVE GYPSUM BOARD CEILINGS, AS REQUIRED FOR UNUSUAL/UNUSUAL SUSPENDED ITEMS (E.G. CERTAIN TRACKS, WINDOW SHADES, ACCESSORIES, ETC.).
7. SEE LIFE SAFETY PLAN FOR DAMPING REQUIREMENTS.
8. INSTALL CONTROL JOINTS IN GYPSUM BOARD AND MELT, STUD-FRAMED PARTITIONS, WALLS, BULKHEADS, BULKHEADS, CASINGS AND SOFFITS IN COMPLIANCE WITH SPECIFICATIONS, AND WITH GENERAL REQUIREMENTS OF ASTM DRAWINGS. PRIOR TO COMMENCEMENT OF FRAMING, SUBMIT A FRAMING PLAN TO THE ARCHITECT INDICATING PROPOSED LOCATIONS OF ALL CONTROL JOINTS, AS SPECIFIED.



SECOND FLOOR REFLECTED CEILING PLAN - ZONE 'C'

SCALE: 1/8" = 1'-0"

LED SQUARE SUSPENDED LIGHT

LED PENDANT LIGHT
(2x2' / 4x4' / 5x5')

LED PENDANT LIGHT

RECESSED LED TROFFER
(2x4' / 2x21' 1x4')

RECESSED LED TROFFER
(2x4' / 2x21' 1x4')

LED PENDANT LIGHT

SURFACE MOUNTED LINEAR LED FIXTURE

PENDANT MOUNTED LINEAR LED FIXTURE

RECESSED LED DOWNLIGHT

EXIT SIGN

SPEAKER

FIRE / LIFE SAFETY FIXTURES: SEE ELECTRICAL, FIRE PROTECTION, PLUMBING, AND TECHNOLOGY DRAWINGS & SPECIFICATIONS

MECHANICAL EQUIPMENT / FIXTURES - SEE MECHANICAL DRAWINGS & SPECIFICATIONS

SUPPLY DIFFUSER

RETURN-AIR / EXHAUST GRILLE

FIRE / LIFE SAFETY FIXTURES: SEE ELECTRICAL, FIRE PROTECTION, PLUMBING, AND TECHNOLOGY DRAWINGS & SPECIFICATIONS

MECHANICAL EQUIPMENT / FIXTURES - SEE MECHANICAL DRAWINGS & SPECIFICATIONS

SUPPLY DIFFUSER

RETURN-AIR / EXHAUST GRILLE

GYP-PTD

24" x 24" SUSPENDED LAY-IN ACOUSTICAL CEILING

EXPOSED CONSTRUCTION (PAINTED UOI)

ACOUSTICAL BAFFLE

ROOM/CEILING TAGS

ROOM NAME

ROOM NUMBER

CEILING FINISH ABBREVIATION (SEE BELOW)

CEILING HEIGHT (AFF)

CEILING FINISH TAG

SPECIFIC FINISH/HEIGHT WHERE VARYING FROM GENERAL ROOM/CEILING TAGS.

GYP-PTD

9'-0"

ROOM/CEILING TAGS

ROOM NAME

ROOM NUMBER

CEILING FINISH ABBREVIATION (SEE BELOW)

CEILING HEIGHT (AFF)

CEILING FINISH TAG

SPECIFIC FINISH/HEIGHT WHERE VARYING FROM GENERAL ROOM/CEILING TAGS.

GYP-PTD

9'-0"

ROOM/CEILING TAGS

ROOM NAME

ROOM NUMBER

CEILING FINISH ABBREVIATION (SEE BELOW)

CEILING HEIGHT (AFF)

CEILING FINISH TAG

SPECIFIC FINISH/HEIGHT WHERE VARYING FROM GENERAL ROOM/CEILING TAGS.

GYP-PTD

9'-0"

ROOM/CEILING TAGS

ROOM NAME

ROOM NUMBER

CEILING FINISH ABBREVIATION (SEE BELOW)

CEILING HEIGHT (AFF)

CEILING FINISH TAG

SPECIFIC FINISH/HEIGHT WHERE VARYING FROM GENERAL ROOM/CEILING TAGS.

GYP-PTD

9'-0"

ROOM/CEILING TAGS

ROOM NAME

ROOM NUMBER

CEILING FINISH ABBREVIATION (SEE BELOW)

CEILING HEIGHT (AFF)

CEILING FINISH TAG

SPECIFIC FINISH/HEIGHT WHERE VARYING FROM GENERAL ROOM/CEILING TAGS.

GYP-PTD

9'-0"

ROOM/CEILING TAGS

ROOM NAME

ROOM NUMBER

CEILING FINISH ABBREVIATION (SEE BELOW)

CEILING HEIGHT (AFF)

CEILING FINISH TAG

SPECIFIC FINISH/HEIGHT WHERE VARYING FROM GENERAL ROOM/CEILING TAGS.

GYP-PTD

9'-0"

ROOM/CEILING TAGS

ROOM NAME

ROOM NUMBER

CEILING FINISH ABBREVIATION (SEE BELOW)

CEILING HEIGHT (AFF)

CEILING FINISH TAG

SPECIFIC FINISH/HEIGHT WHERE VARYING FROM GENERAL ROOM/CEILING TAGS.

GYP-PTD

9'-0"

TMP ARCHITECTURE

259 EAST MICHIGAN AVE., SUITE 107
KALAMAZOO, MICHIGAN 49007
PH: 269.327.0077, FX: 269.327.8090
EM: INFO@TMP-ARCHITECTURE.COM

REGISTRATION SEAL

CONSULTANT

PROJECT TITLE

New Elementary School

Schoolcraft Community Schools
SCHOOLCRAFT, MI

DRAWING TITLE

Second Floor Reflected Ceiling Plan - Zone 'D'

KEYPLAN

ISSUE DATES

4/28/22	ASI #5
10/25/21	ASI #3
09/27/21	ADDENDUM #1
05/13/21	100% CONSTRUCTION DOCUMENTS

DATE

ISSUED FOR:

DRAWN

MN

CHECKED

FJG

APPROVED

FJG

PROJECT NO.

20015

DRAWING NO.

A2.2D

SECOND FLOOR REFLECTED CEILING PLAN - ZONE 'D'

SCALE: 1/8" = 1'-0"

C:\Users\ab\Documents\20015_SCS_New_Elementary_CENTRAL_2019_ab\etings\GKUA.rvt 4/28/2022 11:47:00 AM

REGISTRATION SEAL

CONSULTANT

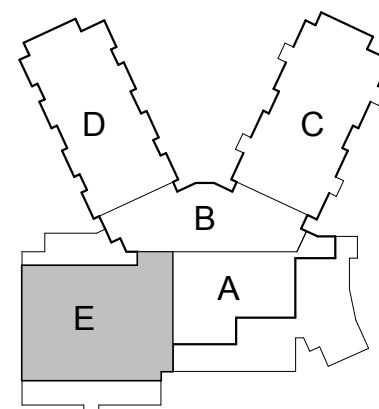
PROJECT TITLE

New Elementary School

Schoolcraft Community Schools
SCHOOLCRAFT, MI

DRAWING TITLE

Second Floor Reflected Ceiling Plan - Zone 'E'



KEYPLAN

ISSUE DATES

[illegible]

DRAWN MN

CHECKED FJG

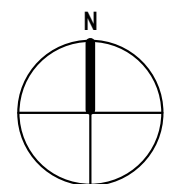
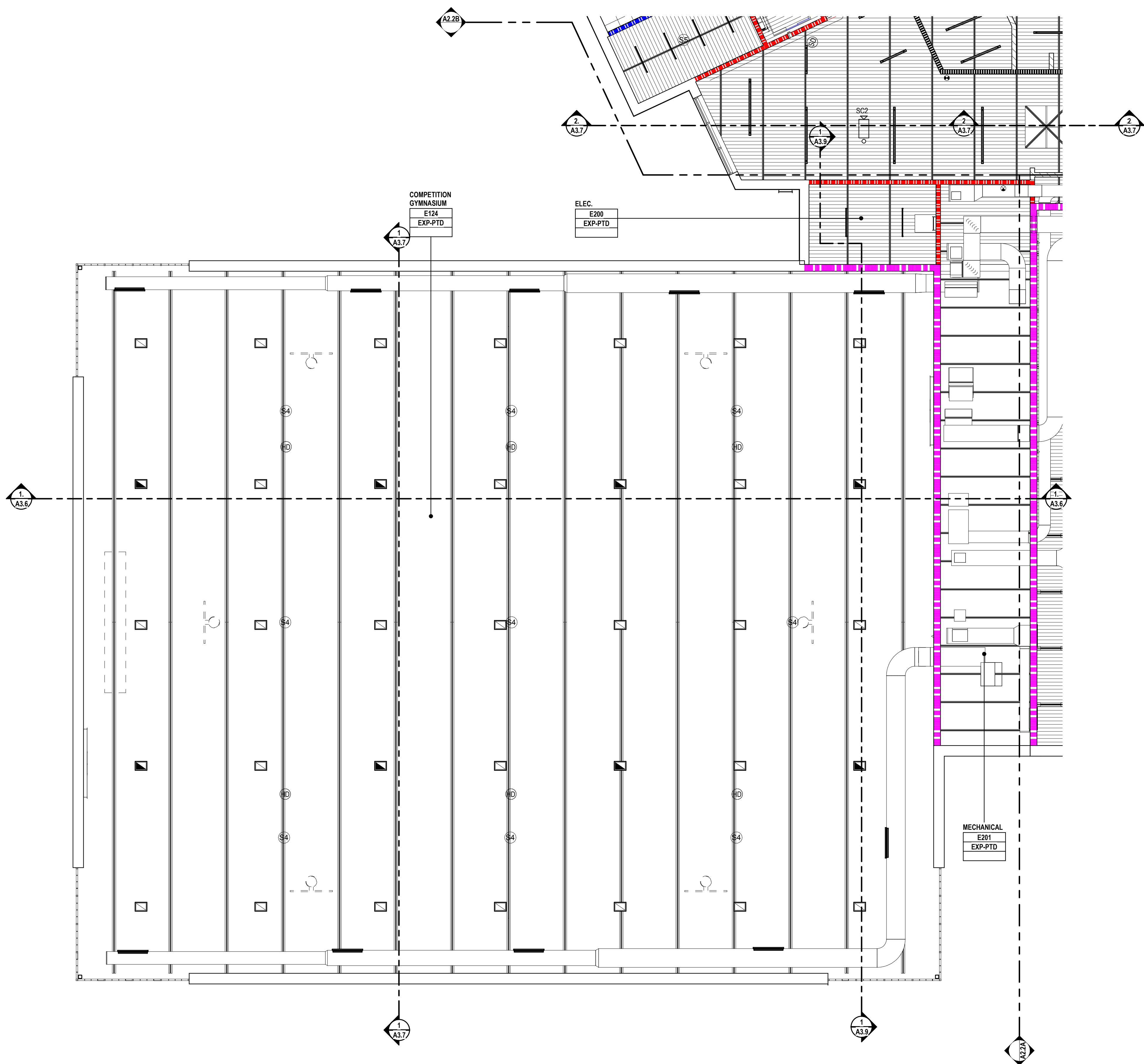
APPROVED FJG

PROJECT NO.

20015

DRAWING NO

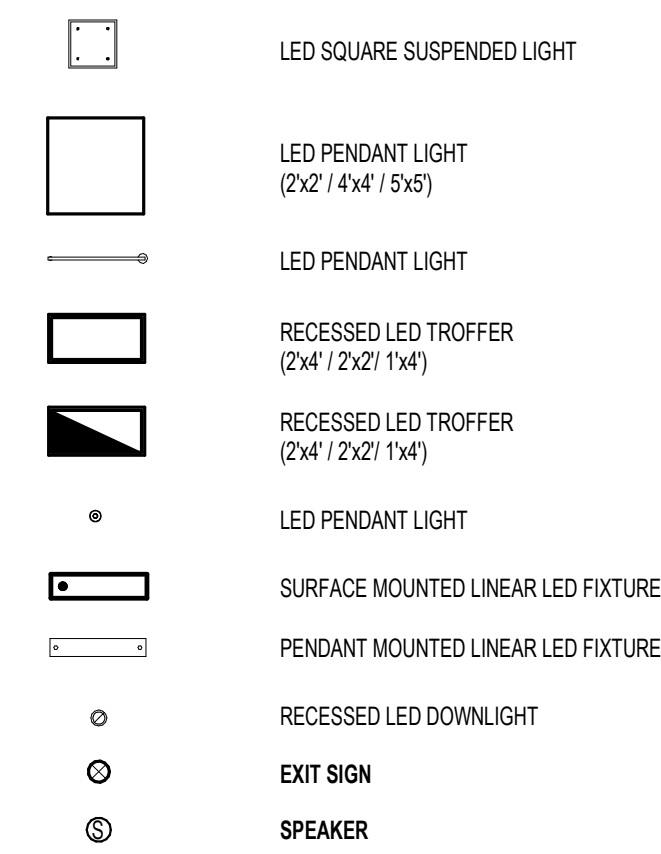
A2.2E



SECOND FLOOR REFLECTED CEILING PLAN - ZONE 'E'

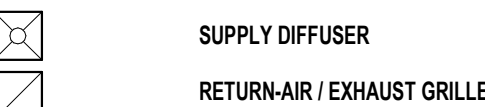
SCALE: 1/8" = 1'-0"

FIXTURE LEGEND

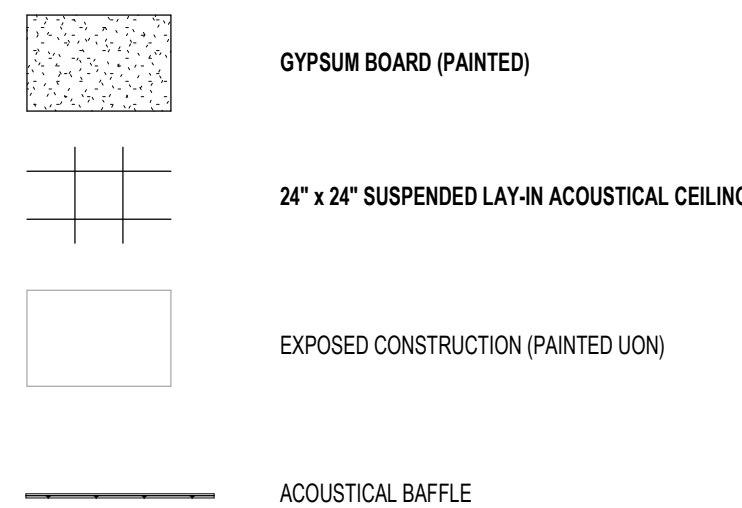


FIRE / LIFE SAFETY FIXTURES: SEE ELECTRICAL, FIRE PROTECTION, PLUMBING, AND TECHNOLOGY DRAWINGS & SPECIFICATIONS

MECHANICAL EQUIPMENT / FIXTURES - SEE MECHANICAL DRAWINGS & SPECIFICATIONS



CEILING KEY



CEILING LEGEND

ROOM/CEILING TAGS		CEILING FINISH TAG	
ROOM NAME AND NUMBER PLUS GENERAL CEILING FINISH AND HEIGHT UNLESS OTHERWISE NOTED		SPECIFIC FINISH/HEIGHT WHERE VARYING FROM GENERAL ROOM/CEILING TAGS.	
CLASSROOM	← ROOM NAME		
F101	← ROOM NUMBER		
ACT	← CEILING FINISH ABBREVIATION (SEE BELOW)		GYP-PTD
9'-0"	← CEILING HEIGHT (AFF)		9'-0"





CEILING FINISH ABBREVIATIONS

AP 1	ACOUSTICAL BAFFLE PANEL - SUSPENDED
ACT 1	ACOUSTICAL LAY-IN CEILING TILE
ACT-2	ACOUSTICAL LAY-IN CEILING TILE
ACT-3	ACOUSTICAL LAY-IN CEILING TILE
EXP-PTD	EXPOSED CONSTRUCTION - PAINTED
BNR"TYPE"	FABRIC BANNERS
DEFS	DIRECT-APPLIED EXTERIOR FINISH SYSTEM
GYP-PTD	GYPSUM BOARD - PAINTED
GYP-EP	GYPSUM BOARD - EPOXY PAINTED
MDP	MDP PANELS
MP	METAL PANELS
OCMC	OPEN CELL METAL CEILING
PTD	PAINTED
RCP	RADIANT CEILING PANELS RE-MECHANICAL DRAWINGS

NOTES

1. SEE FINISH PLANS FOR INFORMATION ON ROOM FINISHES.
2. SEE ARCHITECTURAL PLANS AND SPECIFICATIONS FOR ADDITIONAL INFORMATION ON MATERIALS AND CONSTRUCTION.
3. WHERE EXPOSED CONSTRUCTION IS INDICATED TO BE PAINTED, THIS SHALL INCLUDE ALL STRUCTURAL MEMBERS, NON-CELLULAR ROOF/FLOOR DECK, CELLULAR ROOF/FLOOR DECK, DUCTWORK, DIFFUSERS, GRILLES, PIPING, SUSPENDED EQUIPMENT, CONDUITS, ETC. (U.O.N.).

WALL FIRE RATING LEGEND

	1-HOUR FIRE PARTITIONS FOR STORAGE & UTILITY ROOMS
	1-HOUR FIRE BARRIER FOR EXIT ENCLOSURES
	1-HOUR FIRE BARRIER FOR ELEVATOR HOISTWAYS
	1-HOUR SMOKE AND FIRE BARRIER
	SMOKE PARTITION FOR EGRESS CORRIDORS

REFLECTED CEILING GENERAL NOTES

1. SEE ELECTRICAL DRAWINGS FOR FIXTURE TYPES. SEE ELECTRICAL AND MECHANICAL DRAWINGS FOR ADDITIONAL INFORMATION PERTAINING TO ELECTRICAL AND MECHANICAL WORK.
2. COORDINATE SIZE AND LOCATION OF ALL ACCESS PANELS WITH TRADES REQUIRING THE SAME. ACCESS PANELS ARE REQUIRED ARCHITECTURALLY BUT ARE REQUIRED TO BE PROVIDED BY TRADE. SPOT ALL LOCATIONS WITH FIXED GYPSUM BOARD CEILINGS AND REQUEST APPROVAL FROM THE ARCHITECT'S FIRM BEFORE ANY REPAIR OR REPLACEMENT.
3. COORDINATE CEILING SUSPENSION SYSTEMS WITH OTHER CEILING SPACE EQUIPMENT SUPPORTS.
4. ALL FIRE WALLS, FIRE BARRIERS, FIRE PARTITIONS, SMOKE BARRIERS AND SMOKE PARTITIONS ARE ACCESSIBLE CEILINGS SHALL BE MARKED EVERY 8" BY HORIZONTALLY AND WITHIN 15" OF END WALLS. "FIRE AND/OR SMOKE BARRIER, PROTECT ALL OPENINGS. REFER TO CURRENT BUILDING CODE FOR LETTERING HEADING, STYLE AND CONTRAST.
5. ALL GYPSUM BOARD CASING AT SOFFITS, ADJACENT TO DRY IN CEILINGS, SHALL EXTEND 8" MINIMUM ABOVE LAY-IN CEILING.
6. PROVIDE WOOD BLOCKING ABOVE GYPSUM BOARD CEILINGS, AS REQUIRED FOR UNUSUAL/UNUSUAL SUSPENDED ITEMS (E.G. CERTAIN TRACKS, WINDOW SHADES, ACCELSURF, BARS, ETC.).
7. SEE LIFE SAFETY PLAN FOR DAMPING REQUIREMENTS.
8. INSTALL CONTROL JOINTS IN GYPSUM BOARD AND MELT STUD-FRAMED PARTITIONS, WALLS, BULKHEADS, BULKHEADS, FACED AND SOFFIT IN COMPLIANCE WITH SPECIFICATIONS AND WITH GENERAL REQUIREMENTS OF ASTM DRAWINGS. PRIOR TO COMMENCEMENT OF FRAMING, SUBMIT A PROPOSED FRAMING PLAN TO THE ARCHITECT FOR REVIEW AND APPROVAL. THE FRAMING PLAN SHALL INDICATE PROPOSED LOCATIONS OF ALL CONTROL JOINTS, AS SPECIFIED.