

# Appendix A

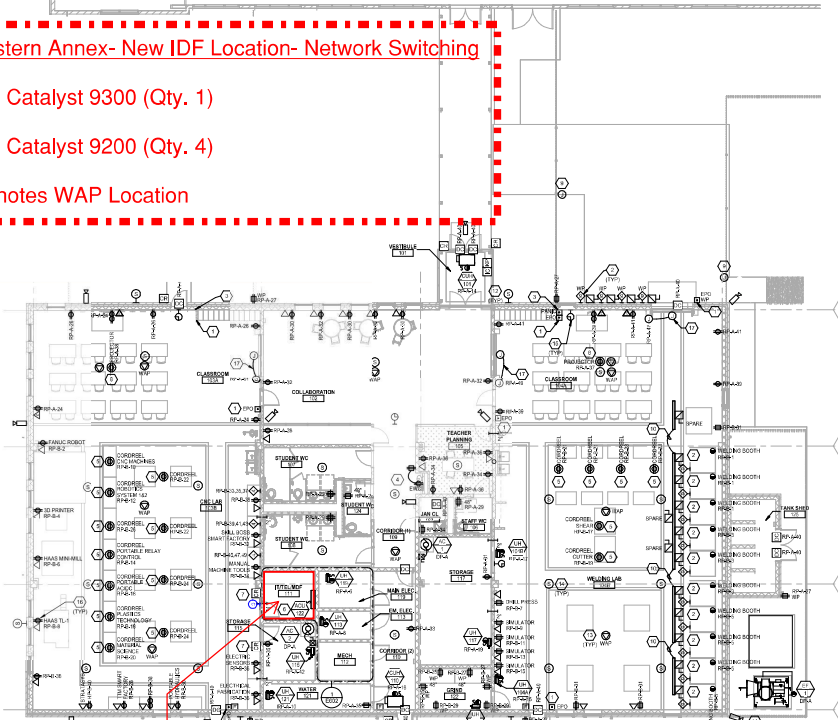
THE FOLLOWING DIMENSION EQUALS ONE INCH WHEN PRINTED TO SCALE.

## Southeastern Annex- New IDF Location- Network Switching

\*Cisco Catalyst 9300 (Qty. 1)

\*Cisco Catalyst 9200 (Qty. 4)

WAP Denotes WAP Location



NEW IDF Location

LEVEL 1 POWER AND AUXILIARY SYSTEMS PLAN

### ELECTRICAL GENERAL NOTES:

1. THESE DIMENSIONS REPRESENT THE GENERAL LAYOUT AND ARRANGEMENT OF EXISTING COORDINATE EXCEPT AS NOTED OTHERWISE. FINAL CONSTRUCTION REQUIREMENTS PROVIDE EACH SYSTEM COMPLETE INCLUDING ALL NECESSARY COMPONENTS, WIRING AND OFFSETS.
2. VERIFY EXISTING CONDITIONS, INCLUDING ALL NECESSARY COMPONENTS, WIRING AND OFFSETS. PROVIDE ALL NECESSARY AND ELECTRICAL EQUIPMENT, AND VERIFY ANY COMPONENTS WHICH REQUIRE CORRECTIONS.
3. COORDINATE ALL NECESSARY ACCESS POINTS WITH ARCHITECTURAL DRAWINGS FOR ALL SYSTEMS.
4. PROVIDE SUPPLEMENTARY STEELS AS REQUIRED FOR THE PROPER SUPPORT OF ALL SYSTEMS.
5. TRANSFORMER SECONDARY CONDUITS SHALL BE IN ACCORDANCE WITH TRANSFORMER ELECTRICAL CODES AND ALL OTHER APPLICABLE ELECTRICAL REGULATORY AGENCIES' REQUIREMENTS.
6. VERIFY ALL ELECTRICAL SYMBOLS ARE IN ACCORDANCE WITH THE NATIONAL ELECTRICAL SYMBOLS MANUAL AND ALL OTHER APPLICABLE ELECTRICAL REGULATORY AGENCIES' REQUIREMENTS.
7. COORDINATE THE BUILDING HEIGHTS OF SERVICES WITH ARCHITECTURAL ELEVATIONS AND THE TRACES SHOWING THE ELEVATION.
8. COORDINATE EXACT LOCATIONS OF ALL FLOOR SERVICE FITTINGS AND ROOMS FROM ASSEMBLIES WITH THE ARCHITECTURAL DRAWINGS.
9. VERIFY ALL ELECTRICAL SYMBOLS ARE IN ACCORDANCE WITH THE NATIONAL ELECTRICAL SYMBOLS MANUAL AND ALL OTHER APPLICABLE ELECTRICAL REGULATORY AGENCIES' REQUIREMENTS.
10. REFER TO THE ELECTRICAL CONTROL SCHEDULE FOR REQUIRED FIRE ALARM CONTROL MODULES, DUCT DETECTOR MODULES AND ROOMS FOR REQUIRED FIRE ALARM CONTROL MODULES.
11. THE FIRE ALARM CONTROL SCHEDULE IS A GENERAL REPRESENTATION OF THE FIRE ALARM SYSTEM. VERIFY THE SYSTEM SHALL BE IN ACCORDANCE WITH ALL APPLICABLE ELECTRICAL REGULATORY AGENCIES' REQUIREMENTS. VERIFY THE SYSTEM SHALL BE IN ACCORDANCE WITH ALL APPLICABLE ELECTRICAL REGULATORY AGENCIES' REQUIREMENTS. VERIFY THE SYSTEM SHALL BE IN ACCORDANCE WITH ALL APPLICABLE ELECTRICAL REGULATORY AGENCIES' REQUIREMENTS. VERIFY THE SYSTEM SHALL BE IN ACCORDANCE WITH ALL APPLICABLE ELECTRICAL REGULATORY AGENCIES' REQUIREMENTS.
12. REFER TO THE ELECTRICAL CONTROL SCHEDULE FOR ROOM CONTROL AND EXHAUST FAN CONTROL CONTROL SCHEDULES. VERIFY THE SYSTEM SHALL BE IN ACCORDANCE WITH ALL APPLICABLE ELECTRICAL REGULATORY AGENCIES' REQUIREMENTS.
13. VERIFY ALL ELECTRICAL SYMBOLS ARE IN ACCORDANCE WITH THE NATIONAL ELECTRICAL SYMBOLS MANUAL AND ALL OTHER APPLICABLE ELECTRICAL REGULATORY AGENCIES' REQUIREMENTS.
14. ALL ELECTRICAL SYMBOLS SHALL BE IN ACCORDANCE WITH THE NATIONAL ELECTRICAL SYMBOLS MANUAL AND ALL OTHER APPLICABLE ELECTRICAL REGULATORY AGENCIES' REQUIREMENTS.
15. VERIFY ALL ELECTRICAL SYMBOLS ARE IN ACCORDANCE WITH THE NATIONAL ELECTRICAL SYMBOLS MANUAL AND ALL OTHER APPLICABLE ELECTRICAL REGULATORY AGENCIES' REQUIREMENTS.

### CONSTRUCTION KEY NOTES:

1. SHALL VERIFY EXISTING POWER OF STATION, VERIFY TO BE CONNECTED TO SHUNT TRIP CIRCUIT AND VERIFY THE SYSTEM SHALL BE IN ACCORDANCE WITH ALL APPLICABLE ELECTRICAL REGULATORY AGENCIES' REQUIREMENTS.
2. PROVIDE NEW WIRING AND ELECTRICAL EQUIPMENT AS SHOWN ON THE DRAWINGS AND VERIFY THE SYSTEM SHALL BE IN ACCORDANCE WITH ALL APPLICABLE ELECTRICAL REGULATORY AGENCIES' REQUIREMENTS.
3. COORDINATE ALL NECESSARY ACCESS POINTS WITH ARCHITECTURAL DRAWINGS FOR ALL SYSTEMS.
4. PROVIDE ALL NECESSARY ELECTRICAL EQUIPMENT, WIRING AND OFFSETS.
5. PROVIDE ALL NECESSARY ELECTRICAL EQUIPMENT, WIRING AND OFFSETS.
6. PROVIDE ALL NECESSARY ELECTRICAL EQUIPMENT, WIRING AND OFFSETS.
7. PROVIDE ALL NECESSARY ELECTRICAL EQUIPMENT, WIRING AND OFFSETS.
8. PROVIDE ALL NECESSARY ELECTRICAL EQUIPMENT, WIRING AND OFFSETS.
9. PROVIDE ALL NECESSARY ELECTRICAL EQUIPMENT, WIRING AND OFFSETS.
10. PROVIDE ALL NECESSARY ELECTRICAL EQUIPMENT, WIRING AND OFFSETS.
11. PROVIDE ALL NECESSARY ELECTRICAL EQUIPMENT, WIRING AND OFFSETS.
12. PROVIDE ALL NECESSARY ELECTRICAL EQUIPMENT, WIRING AND OFFSETS.
13. PROVIDE ALL NECESSARY ELECTRICAL EQUIPMENT, WIRING AND OFFSETS.
14. PROVIDE ALL NECESSARY ELECTRICAL EQUIPMENT, WIRING AND OFFSETS.
15. PROVIDE ALL NECESSARY ELECTRICAL EQUIPMENT, WIRING AND OFFSETS.

**QUINN EVANS**  
 4219 COWDARD AVE  
 SUITE 301  
 DETROIT, MI 48201  
 v 313.662.2550  
 www.quinnevans.com

**P&A**  
 Peter Basso Associates Inc  
 CONSULTING ENGINEERS  
 586 LIVING ST. SUITE 203  
 DETROIT, MI 48202  
 TEL: 313.963.2000  
 WWW.P&A-DETROIT.COM



SOUTHEASTERN HIGH SCHOOL ANNEX

DETROIT PUBLIC SCHOOLS COMMUNITY DISTRICT

3011 W. GRAND BOULEVARD DETROIT, MICHIGAN 48202

Rev. Date Description  
 1/15/2024 01:00 PM  
 WEK  
 ALPS  
 OEA No. 24254880

ISSUE PERMIT SET  
 APRIL 12, 2024

LEVEL 1 POWER AND AUXILIARY SYSTEMS PLAN

E301