

# ADDENDUM NO. 1

<b>Project Owner:</b>	Woodhaven-Brownstown School District
<b>Project Name:</b>	Technology Renovations - Bid Pack 3060
<b>Issue Date:</b>	February 25, 2025

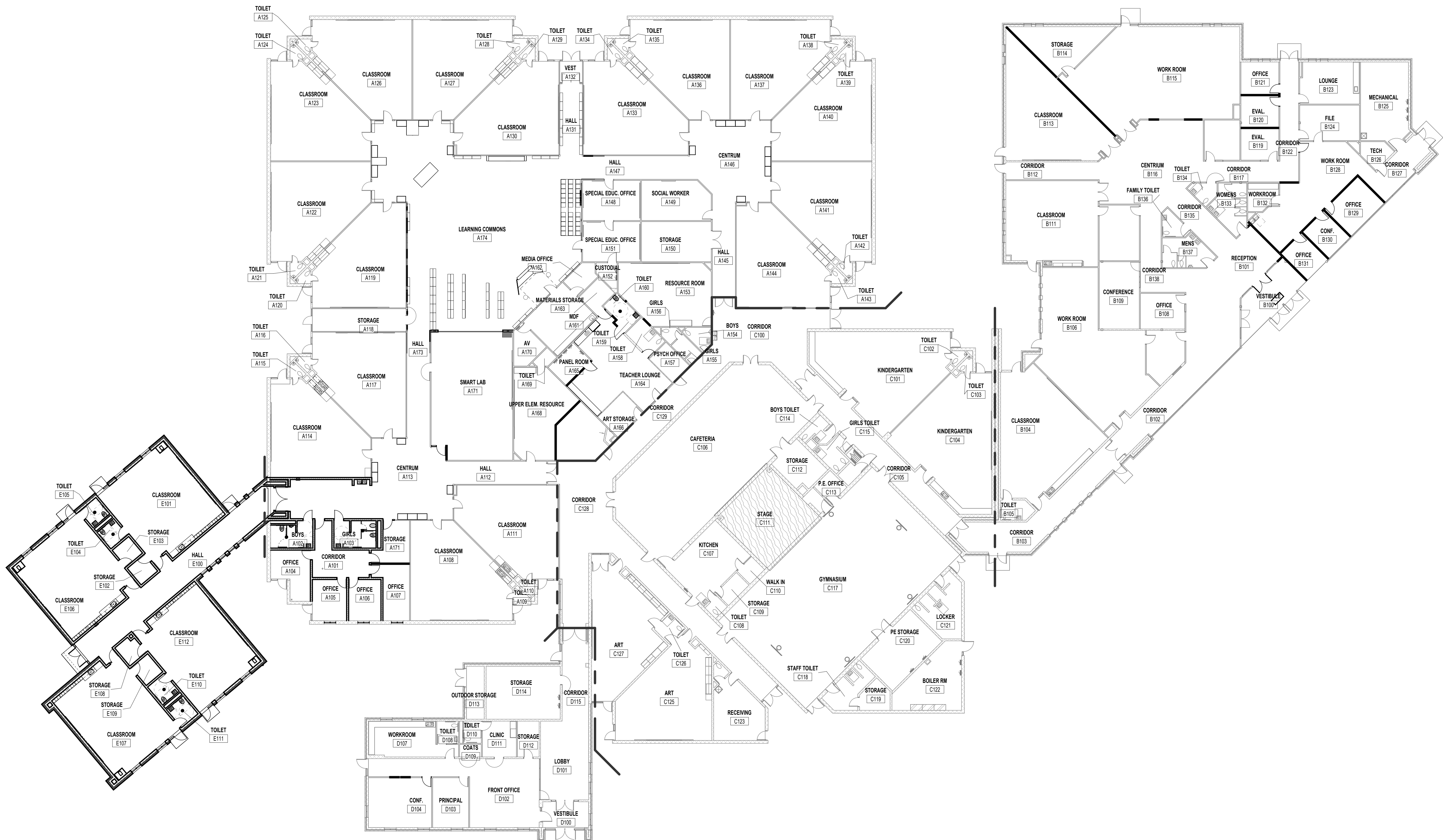
*This Addendum No. 1 of the Technology Request for Bid for the above referenced project hereby amends, supplements and/or augments all prior issued document(s) as described herein, and becomes an inseparable part of the Contract Documents, superseding all previous, contrary and/or conflicting information.*

<b>AD1 - 1</b>	Appendix A is hereby revised, reissued and attached hereto.
<b>AD1 - 2</b>	Section 00 11 16.1.01.E.5 is hereby added:  5. Woodhaven Upper Elementary 24825 Hall Road Woodhaven, Michigan 48183
<b>AD1 - 3</b>	Section 27 10 00.3.02.5 is hereby added:  5. Woodhaven Upper Elementary 24825 Hall Road Woodhaven, Michigan 48183

END OF ADDENDUM NO. 1

<i>Bid ID: 3060</i>	Communications by Design, Inc.
<i>Addendum #1 Issued: March 6, 2025</i>	<i>Proprietary Information – All Rights Reserved</i>

Appendix A: Revised and Ressiued per Addendum A (03/06/25)



OVERALL PLAN  
1/16" = 1'-0"

GUDITH ELEMENTARY SCHOOL IMPROVEMENTS  
WOODHAVEN-BROWNSTOWN SCHOOL DISTRICT  
BROWNSTOWN, MICHIGAN

ISSUANCES  
10.10.2024 BIDS & CONSTRUCTION

DRAWN DJM  
REVIEWED DMG

PROJECT NO. 5-5509

NO PART OF THIS DRAWING MAY BE USED OR REPRODUCED IN ANY FORM OR BY ANY MEANS, OR STORED IN A DATA BASE OR RETRIEVAL SYSTEM, WITHOUT PRIOR WRITTEN PERMISSION OF GMB COPYRIGHT © 2024 ALL RIGHTS RESERVED

OVERALL PLAN

A0.01

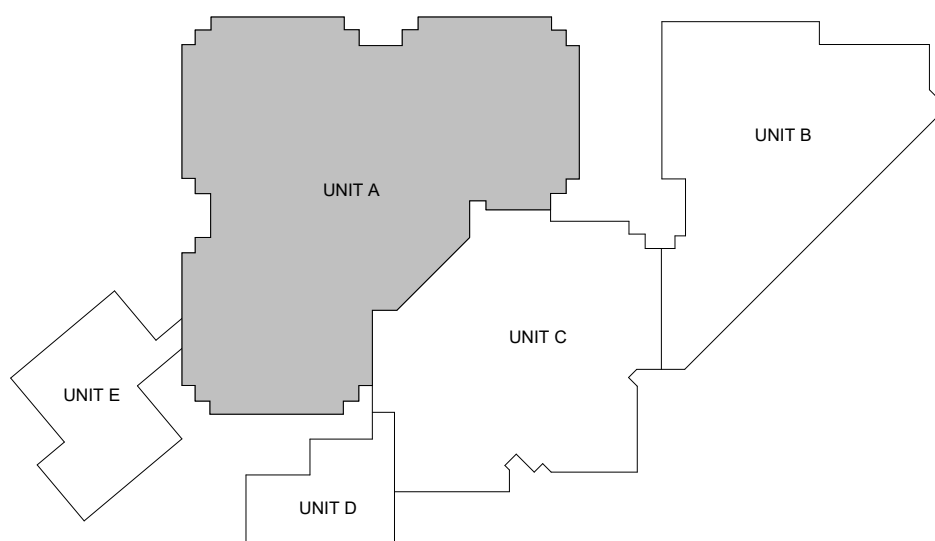
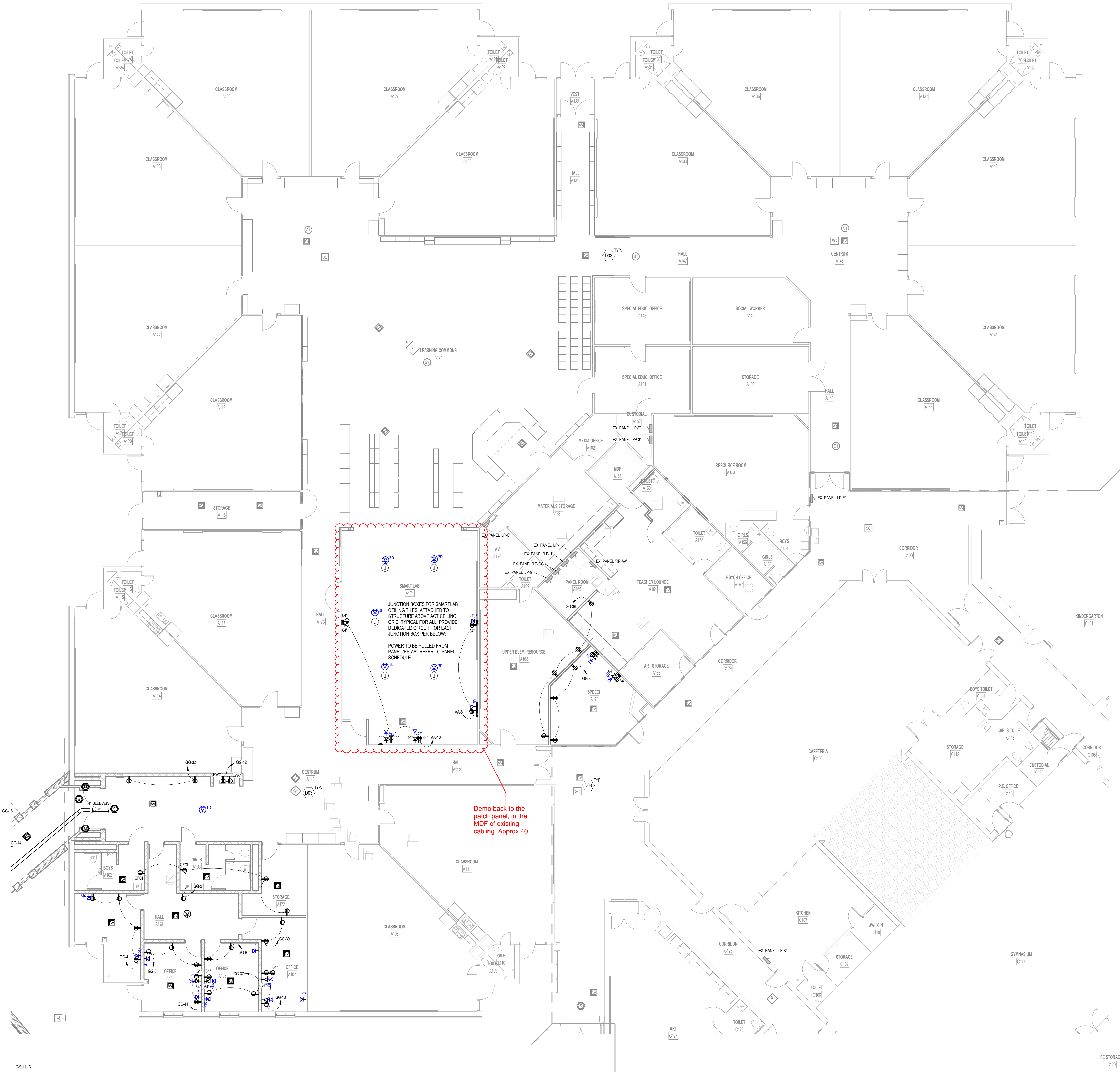


## POWER &amp; COMMUNICATION GENERAL NOTES

- REFER TO ELECTRICAL GENERAL NOTES ON SHEET **E001**
- REFER TO CODE COMPLIANCE PLAN FOR LOCATIONS AND RATINGS OF VERTICAL AND HORIZONTAL BUILDING ASSEMBLIES. PROVIDE APPROPRIATE FIRESTOPPING SYSTEMS PER SPECIFICATIONS TO MEET ALL APPLICABLE CODES.
- ALL GENERAL USE 15- AND 20-AMPERE, 125- AND 250-VOLT NON-LOCKING RECEPTACLES SHALL BE TAMPER-RESISTANT TYPE. REFER TO NEC 408.12 AND SPECIFICATION SECTION 26 27 26.
- PROVIDE 120VAC POWER FOR ALL SMOKE DAMPERS AND COMBINATION FIRE/SMOKE DAMPERS.
  - REFER TO MECHANICAL/HVAC DRAWINGS FOR LOCATIONS AND QUANTITIES OF DAMPERS.
  - CONNECT TO DEDICATED 20A BRANCH CIRCUIT (WITH BREAKER LOCK-ON ACCESSORY) IN LOCAL PANEL BOARD FOR DAMPER(S) IN EACH AREA (DAMPERS MAY BE GROUPED ON EACH CIRCUIT).
  - TERMINATE W/ BOX-COVER FUSIBLE DISCONNECT SWITCH AT EACH DAMPER.
  - PROVIDE FIRE ALARM DUCT SMOKE DETECTOR WITHIN 5 FEET OF EACH DAMPER UNLESS COVERED BY ANOTHER DUCT DETECTOR WITHIN 5 FEET.
  - PROVIDE FIRE ALARM ADDRESSABLE RELAY(S) FOR INTERLOCKING DAMPER W/ CORRESPONDING HVAC UNIT(S) PER CODE REQUIREMENTS.
- PROVIDE BOX-COVER FUSIBLE DISCONNECT SWITCH ON BUILDING INTERIOR IN ACCESSIBLE LOCATION FOR EACH SMALL (1/2" HP) MECHANICAL AND/OR PLUMBING EQUIPMENT MOTOR LOAD WHERE MORE THAN ONE UNIT IS CONNECTED TO A COMMON BRANCH CIRCUIT. TYPICAL EQUIPMENT TYPES INCLUDE BUT ARE NOT LIMITED TO CABINET HEATERS, DAMPERS, EXHAUST FANS, PAN COIL UNITS, PUMPS, UNIT HEATERS, VAV BOXES, ETC.
- DESIGNATED CABLE PATHWAYS (CONDUITS, CABLE TRAYS, PENETRATION SLEEVES, ETC.) SHALL BE RESERVED FOR DIV. 27 COMMUNICATIONS CABLEING AND DIV. 28 SAFETY/SECURITY CABLEING ONLY. OTHER CABLEING TYPES, SUCH AS DIV. 23 CONTROLS, DIV. 26 CONTROLS, AND ARCHITECTURAL EQUIPMENT CABLEING SHALL BE SUPPORTED AND SLEAVED BY OTHER INDEPENDENT PATHWAYS, HANDERS, AND SUPPORTS.
- CONSOLIDATE ALL POWER SUPPLIES REQUIRED FOR ELECTRONIC DOOR HARDWARE (REF. SECTION 08 71 00) TO CENTRAL LOCATIONS) ADJACENT TO DESIGNATED ACCESS CONTROL EQUIPMENT LOCATIONS). CONNECT ALL POWER SUPPLIES TO DESIGNATED LOCAL STANDBY POWER SYSTEM BRANCH CIRCUIT(S) AS DESIGNATED FOR CONTINUED OPERATION UNDER LOSS OF UTILITY POWER.

## ELECTRICAL KEYNOTES

- D03** TIE UP TO CEILING OR REMOVE ALL FIRE ALARM SPEAKERS AND OTHER CEILING DEVICES TO SUPPORT CONSTRUCTION. RE-INSTALL DEVICES INTO NEW CEILING, COORDINATE WITH TECHNOLOGY CONTRACTOR.



## ISSUANCES

11.05.2024 BIDS &  
CONSTRUCTIONDRAWN NTM  
REVIEWED PRH

PROJECT NO. 5-5509

NO PART OF THIS DRAWING MAY BE  
USED OR REPRODUCED IN ANY FORM  
OR BY ANY MEANS, OR STORED IN A  
DATA BASE OR RETRIEVAL SYSTEM,  
WITHOUT PRIOR WRITTEN  
PERMISSION OF  
GMB COPYRIGHT © 2024  
ALL RIGHTS RESERVEDUNIT 'A' FIRST FLOOR POWER  
& COMMUNICATIONS PLAN

E2.1A



G-8.11.13

UNIT 'A' FIRST FLOOR POWER &amp; COMMUNICATIONS PLAN

1/8" = 1'-0"



## POWER &amp; COMMUNICATION GENERAL NOTES

- REFER TO ELECTRICAL GENERAL NOTES ON SHEET **EN01**.
- REFER TO CODE COMPLIANCE PLAN FOR LOCATIONS AND RATINGS OF VERTICAL AND HORIZONTAL BUILDING ASSEMBLIES. PROVIDE APPROPRIATE FIRESTOPPING SYSTEMS PER SPECIFICATIONS TO MEET ALL APPLICABLE CODES.
- ALL GENERAL USE 15- AND 20-AMPERE, 125- AND 250-VOLT NON-LOCKING RECEPTACLES SHALL BE TAMPER-RESISTANT TYPE. REFER TO NEC 408.12 AND SPECIFICATION SECTION 26 27 26.
- PROVIDE 120VAC POWER FOR ALL SMOKE DAMPERS AND COMBINATION FIRE/SMOKE DAMPERS.
  - REFER TO MECHANICAL/HVAC DRAWINGS FOR LOCATIONS AND QUANTITIES OF DAMPERS.
  - CONNECT TO DEDICATED 20A BRANCH CIRCUIT (WITH BREAKER LOCK-ON ACCESSORY) IN LOCAL PANELBOARD FOR DAMPERS) IN EACH AREA (DAMPERS MAY BE GROUPED ON EACH CIRCUIT).
  - TERMINATE W/ BOX-COVER FUSIBLE DISCONNECT SWITCH AT EACH DAMPER.
  - PROVIDE FIRE ALARM DUCT SMOKE DETECTOR WITHIN 5 FEET OF EACH DAMPER UNLESS COVERED BY ANOTHER DUCT DETECTOR (WITHIN 5 FEET).
  - PROVIDE FIRE ALARM ADDRESSABLE RELAY(S) FOR INTERLOCKING DAMPER W/ CORRESPONDING HVAC UNIT(S) PER CODE REQUIREMENTS.
- PROVIDE BOX-COVER FUSIBLE DISCONNECT SWITCH ON BUILDING INTERIOR IN ACCESSIBLE LOCATION FOR EACH SMALL (< 1/2 HP) MECHANICAL AND/OR PLUMBING EQUIPMENT MOTOR LOAD WHERE MORE THAN ONE UNIT IS CONNECTED TO A COMMON BRANCH CIRCUIT. TYPICAL EQUIPMENT TYPES INCLUDE BUT ARE NOT LIMITED TO CABINET HEATERS, DAMPERS, EXHAUST FANS, FAN COIL UNITS, PUMPS, UNIT HEATERS, VAV BOXES, ETC.
- DESIGNATED CABLEING PATHWAYS (CONDUITS, CABLE TRAYS, PENETRATION SLEEVES, ETC.) SHALL BE RESERVED FOR DIV. 27 COMMUNICATIONS CABLEING AND DIV. 28 SAFETY/SECURITY CABLEING ONLY. OTHER CABLEING TYPES, SUCH AS DIV. 23 CONTROLS, DIV. 26 CONTROLS, AND ARCHITECTURAL EQUIPMENT CABLEING SHALL BE SUPPORTED AND SLEEVED BY OTHER INDEPENDENT PATHWAYS, HANGERS, AND SUPPORTS.
- CONSOLIDATE ALL POWER SUPPLIES REQUIRED FOR ELECTRONIC DOOR HARDWARE (REF. SECTION 08 71 00) TO CENTRAL LOCATION(S) ADJACENT TO DESIGNATED ACCESS CONTROL EQUIPMENT LOCATION(S). DISCONNECT ALL POWER SUPPLIES TO DESIGNATED LOCAL (STANDBY POWER SYSTEM) BRANCH CIRCUIT(S) AS DESIGNATED FOR CONTINUED OPERATION UNDER LOSS OF UTILITY POWER.

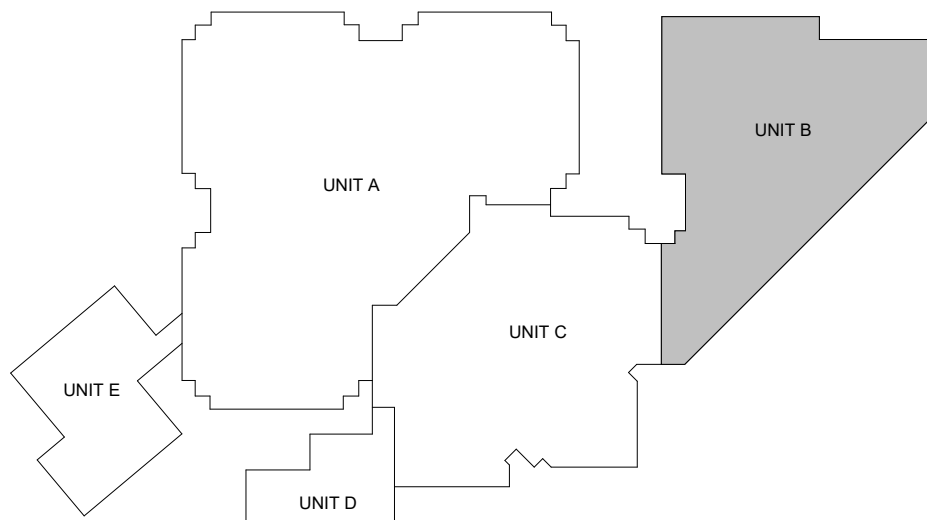
## ELECTRICAL KEYNOTES

D03	TIE UP TO CEILING OR REMOVE ALL FIRE ALARM SPEAKERS AND OTHER CEILING DEVICES TO SUPPORT CONSTRUCTION. RE-INSTALL DEVICES INTO NEW CEILING. COORDINATE WITH TECHNOLOGY CONTRACTOR.
P02	PROVIDE FURNITURE FEED FOR BOTH POWER AND DATA TO FURNITURE SYSTEM. COORDINATE FEED STYLE AND FACILITIES WITH FURNITURE LOCATION AND MANUFACTURER INSTRUCTIONS. CONFIRM LOCATIONS OF FURNITURE FEEDS WITH FINAL FURNITURE LAYOUT PRIOR TO INSTALLATION. FISH COP. WALLS FOR FURNITURE LOCATIONS.
P03	RE-WORK AND EXTEND EXISTING FURNITURE FEED LOCATIONS FOR NEW FURNITURE LAYOUT. COORDINATE FEED STYLE AND FACILITIES WITH FURNITURE LOCATION AND MANUFACTURER INSTRUCTIONS.



UNIT 'B' FIRST FLOOR POWER &amp; COMMUNICATIONS PLAN

1/8" = 1'-0"



KEYPLAN

## ISSUANCES

11.05.2024 BIDS &  
CONSTRUCTION  
11.26.2024 ADDENDUM 002

DRAWN NTM  
REVIEWED PRH

PROJECT NO. 5-5509

NO PART OF THIS DRAWING MAY BE  
USED OR REPRODUCED IN ANY FORM  
OR BY ANY MEANS, OR STORED IN A  
DATA BASE OR RETRIEVAL SYSTEM,  
WITHOUT PRIOR WRITTEN  
PERMISSION OF  
GMB COPYRIGHT © 2024  
ALL RIGHTS RESERVED


UNIT 'B' FIRST FLOOR POWER  
& COMMUNICATIONS PLAN

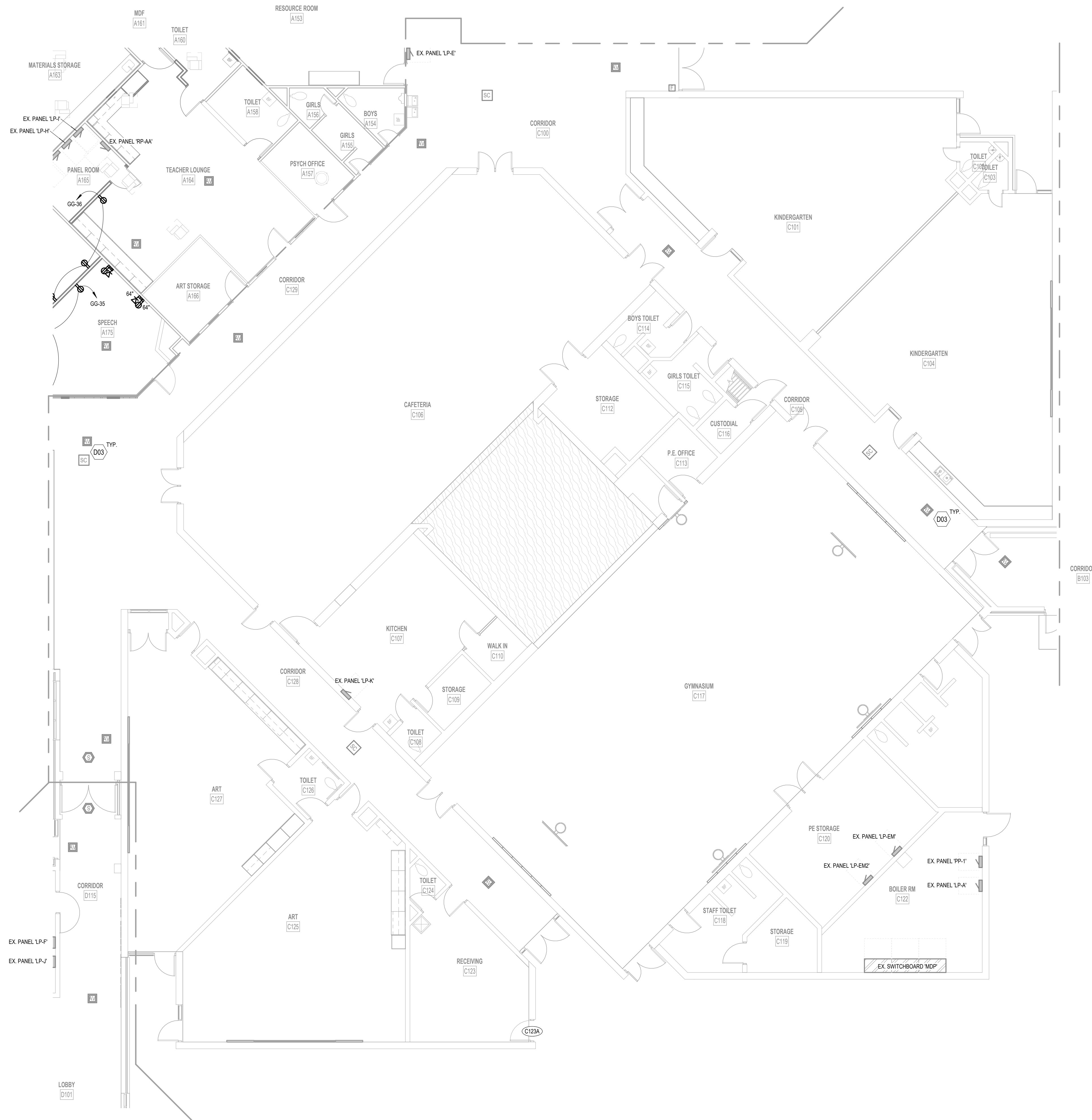
E2.1B

## POWER &amp; COMMUNICATION GENERAL NOTES

- REFER TO ELECTRICAL GENERAL NOTES ON SHEET **EW01**
- REFER TO CODE COMPLIANCE PLAN FOR LOCATIONS AND RATINGS OF VERTICAL AND HORIZONTAL BUILDING ASSEMBLIES. PROVIDE APPROPRIATE FIRESTOPPING SYSTEMS PER SPECIFICATIONS TO MEET ALL APPLICABLE CODES.
- ALL GENERAL USE 15- AND 20-AMPERE, 125- AND 250-VOLT NON-LOCKING RECEPTACLES SHALL BE TAMPER-RESISTANT TYPE. REFER TO NEC 408.12 AND SPECIFICATION SECTION 28.27.26.
- PROVIDE 120VAC POWER FOR ALL SMOKE DAMPERS AND COMBINATION FIRE/SMOKE DAMPERS:
  - REFER TO MECHANICAL/HVAC DRAWINGS FOR LOCATIONS AND QUANTITIES OF DAMPERS.
  - CONNECT TO DEDICATED 20A BRANCH CIRCUIT (WITH BREAKER LOOK-ON ACCESSORY IN LOCAL PANELBOARD FOR DAMPERS) IN EACH AREA (DAMPERS MAY BE GROUPED ON EACH CIRCUIT).
  - TERMINATE W/ BOX COVER FUSIBLE DISCONNECT SWITCH AT EACH DAMPER.
  - PROVIDE FIRE ALARM DUCT SMOKE DETECTOR WITHIN 5 FEET OF EACH DAMPER UNLESS COVERED BY ANOTHER DUCT DETECTOR WITHIN 5 FEET.
  - PROVIDE FIRE ALARM ADDRESSABLE RELAY(S) FOR INTERLOCKING DAMPER W/ CORRESPONDING HVAC UNIT(S) PER CODE REQUIREMENTS.
- PROVIDE BOX COVER FUSIBLE DISCONNECT SWITCH ON BUILDING INTERIOR IN ACCESSIBLE LOCATION FOR EACH SMALL (< 1/2 HP) MECHANICAL AND/OR PLUMBING EQUIPMENT MOTOR LOAD WHERE MORE THAN ONE UNIT IS CONNECTED TO A COMMON BRANCH CIRCUIT. TYPICAL EQUIPMENT TYPES INCLUDE BUT ARE NOT LIMITED TO CABINET HEATERS, DAMPERS, EXHAUST FANS, FAN COIL UNITS, PUMPS, UNIT HEATERS, VAV BOXES, ETC.
- DESIGNATED CABLEING PATHWAYS (CONDUITS, CABLE TRAYS, PENETRATION SLEEVES, ETC.) SHALL BE RESERVED FOR DIV. 27 COMMUNICATIONS CABLEING AND DIV. 28 SAFETY/SECURITY CABLEING ONLY. OTHER CABLEING TYPES, SUCH AS DIV. 21 CONTROLS, DIV. 25 CONTROLS, AND ARCHITECTURAL EQUIPMENT CABLEING SHALL BE SUPPORTED AND SLEEVED BY OTHER INDEPENDENT PATHWAYS, HANGERS, AND SUPPORTS.
- CONSOLIDATE ALL POWER SUPPLIES REQUIRED FOR ELECTRONIC DOOR HARDWARE (REF. SECTION 08.71.00) TO CENTRAL LOCATION(S) ADJACENT TO DESIGNATED ACCESS CONTROL EQUIPMENT LOCATION(S). CONNECT ALL POWER SUPPLIES TO DEDICATED LOCAL (STANDBY POWER SYSTEM BRANCH CIRCUIT(S) AS DESIGNATED) FOR CONTINUED OPERATION UNDER LOSS OF UTILITY POWER.

## ELECTRICAL KEYNOTES

-  D03 TIE UP TO CEILING OR REMOVE ALL FIRE ALARM, SPEAKERS AND OTHER CEILING DEVICES TO SUPPORT CONSTRUCTION. RE-INSTALL DEVICES INTO NEW CEILING, COORDINATE WITH TECHNOLOGY CONTRACTOR.



 UNIT 'C' FIRST FLOOR POWER & COMMUNICATIONS PLAN  
1/8" = 1'-0"

## ISSUANCES

11.05.2024 BIDS &  
CONSTRUCTION

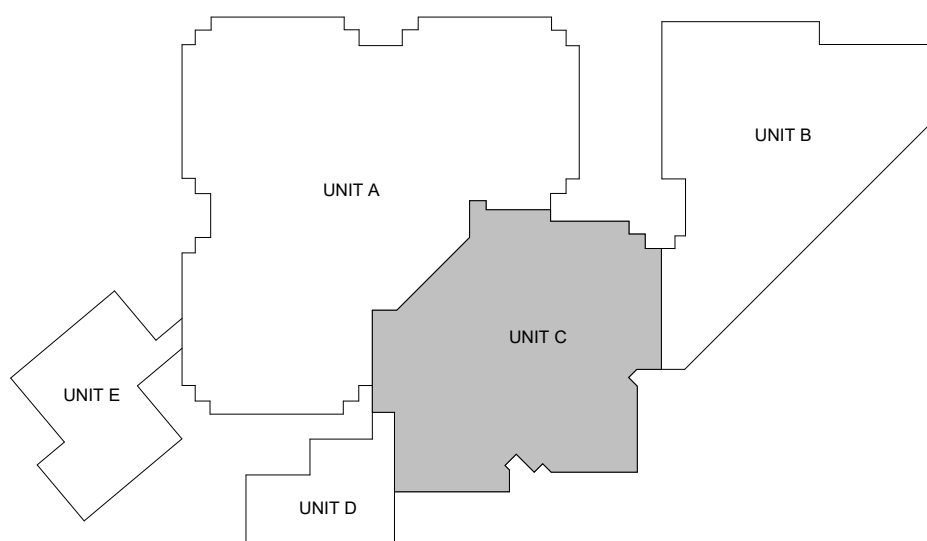
DRAWN NTM  
REVIEWED PRH

PROJECT NO. 5-5509

NO PART OF THIS DRAWING MAY BE  
USED OR REPRODUCED IN ANY FORM  
OR BY ANY MEANS, OR STORED IN A  
DATA BASE OR RETRIEVAL SYSTEM,  
WITHOUT PRIOR WRITTEN  
PERMISSION OF

GMB COPYRIGHT © 2024  
ALL RIGHTS RESERVED

UNIT 'C' FIRST FLOOR POWER  
& COMMUNICATIONS PLAN



 KEYPLAN

E2.1C



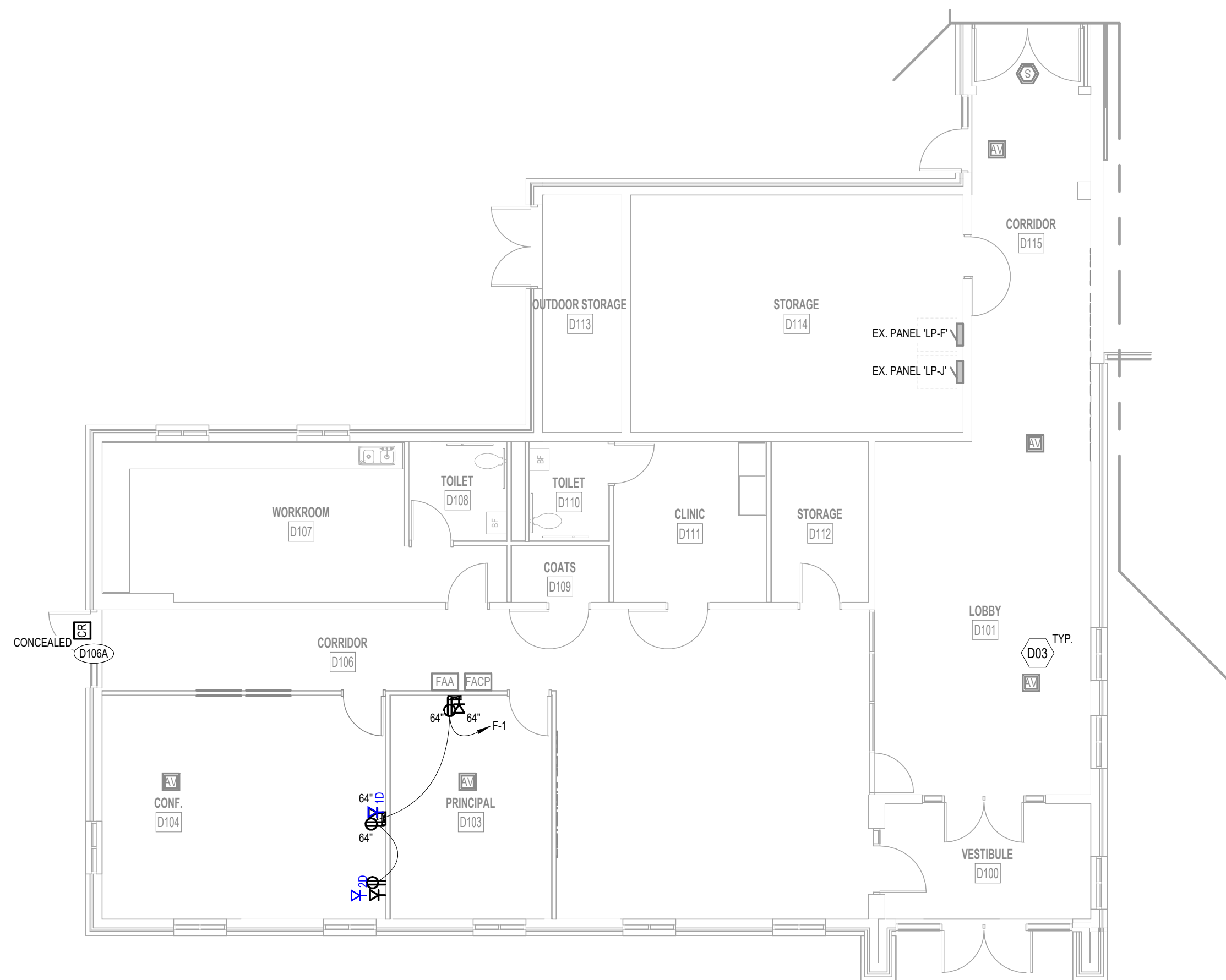
## POWER &amp; COMMUNICATION GENERAL NOTES

1. REFER TO ELECTRICAL GENERAL NOTES ON SHEET **E001**.
2. REFER TO CODE COMPLIANCE PLAN FOR LOCATIONS AND RATINGS OF VERTICAL AND HORIZONTAL BUILDING ASSEMBLIES. PROVIDE APPROPRIATE FIRESTOPPING SYSTEMS PER SPECIFICATIONS TO MEET ALL APPLICABLE CODES.
3. ALL GENERAL USE 15- AND 20-AMPERE, 125- AND 250-VOLT NON-LOCKING RECEPTACLES SHALL BE TAMPER-RESISTANT TYPE. REFER TO NEC 408.12 AND SPECIFICATION SECTION 26 27 26.
4. PROVIDE 120VAC POWER FOR ALL SMOKE DAMPERS AND COMBINATION FIRE/SMOKE DAMPERS.
  - A. REFER TO MECHANICAL/HVAC DRAWINGS FOR LOCATIONS AND QUANTITIES OF DAMPERS.
  - B. CONNECT TO DEDICATED 20A BRANCH CIRCUIT (WITH BREAKER LOCK-ON ACCESSORY) IN LOCAL PANELBOARD FOR DAMPERS(S) IN EACH AREA (DAMPERS MAY BE GROUPED ON EACH CIRCUIT).
  - C. TERMINATE W/ BOX COVER FUSIBLE DISCONNECT SWITCH AT EACH DAMPER.
  - D. PROVIDE FIRE ALARM DUCT SMOKE DETECTOR WITHIN 5 FEET OF EACH DAMPER UNLESS COVERED BY ANOTHER DUCT DETECTOR WITHIN 5 FEET.
  - E. PROVIDE FIRE ALARM ADDRESSABLE RELAY(S) FOR INTERLOCKING DAMPER W/ CORRESPONDING HVAC UNIT(S) PER CODE REQUIREMENTS.
5. PROVIDE BOX-COVER FUSIBLE DISCONNECT SWITCH (ON BUILDING INTERIOR IN ACCESSIBLE LOCATION) FOR EACH SMALL (1/2-1/2 HP) MECHANICAL AND/OR PLUMBING EQUIPMENT MOTOR LOAD WHERE MORE THAN ONE UNIT IS CONNECTED TO A COMMON BRANCH CIRCUIT. TYPICAL EQUIPMENT TYPES INCLUDE BUT ARE NOT LIMITED TO CABINET HEATERS, DAMPERS, EXHAUST FANS, FAN COIL UNITS, PUMPS, UNIT HEATERS, VAV BOXES, ETC.
6. DESIGNATED CABLEING PATHWAYS (CONDUITS, CABLE TRAYS, PENETRATION SLEEVES, ETC.) SHALL BE RESERVED FOR DIV. 27 COMMUNICATIONS CABLEING AND DIV. 28 SAFETY/SECURITY CABLEING ONLY. OTHER CABLEING TYPES, SUCH AS DIV. 23 CONTROLS, DIV. 26 CONTROLS, AND ARCHITECTURAL EQUIPMENT CABLEING SHALL BE SUPPORTED AND SLEEVED BY OTHER INDEPENDENT PATHWAYS, HANGERS, AND SUPPORTS.
7. CONSOLIDATE ALL POWER SUPPLIES REQUIRED FOR ELECTRONIC DOOR HARDWARE (REF. SECTION 08 71 00) TO CENTRAL LOCATION(S) ADJACENT TO DESIGNATED ACCESS CONTROL EQUIPMENT LOCATION(S). CONNECT ALL POWER SUPPLIES TO DEDICATED LOCAL (STANDBY POWER SYSTEM BRANCH CIRCUIT(S) AS DESIGNATED FOR CONTINUED OPERATION UNDER LOSS OF UTILITY POWER).

## ELECTRICAL KEYNOTES

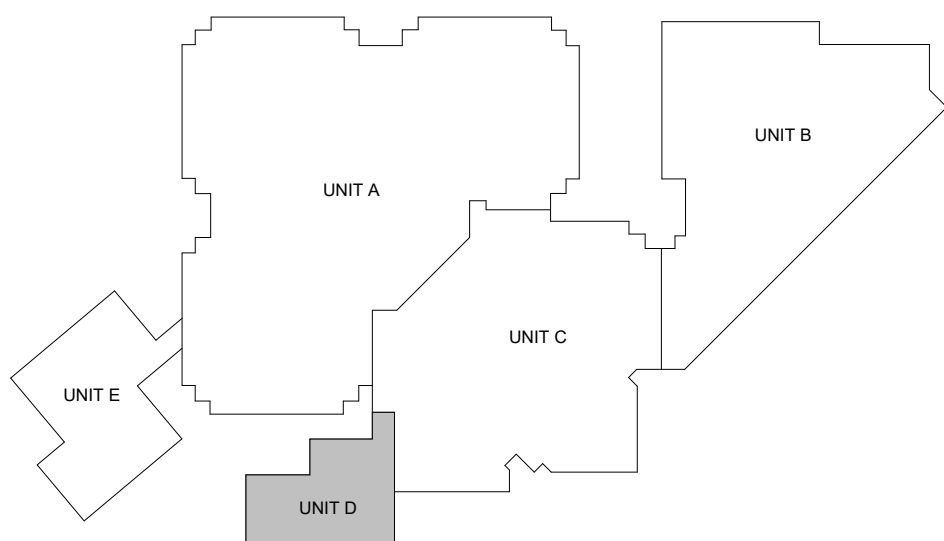


003 TIE UP TO CEILING OR REMOVE ALL FIRE ALARM, SPEAKERS AND OTHER CEILING DEVICES TO SUPPORT CONSTRUCTION. RE-INSTALL DEVICES INTO NEW CEILING. COORDINATE WITH TECHNOLOGY CONTRACTOR.



## UNIT 'D' FIRST FLOOR POWER &amp; COMMUNICATIONS PLAN

1/8" = 1'-0"



## KEYPLAN

## ISSUANCES

11.05.2024 BIDS &  
CONSTRUCTION

DRAWN NTM

REVIEWED PRH

PROJECT NO. 5-5509

NO PART OF THIS DRAWING MAY BE  
USED OR REPRODUCED IN ANY FORM  
OR BY ANY MEANS, OR STORED IN A  
DATA BASE OR RETRIEVAL SYSTEM,  
WITHOUT PRIOR WRITTEN  
PERMISSION OF

GMB COPYRIGHT © 2024  
ALL RIGHTS RESERVED

UNIT 'D' FIRST FLOOR POWER  
& COMMUNICATIONS PLAN

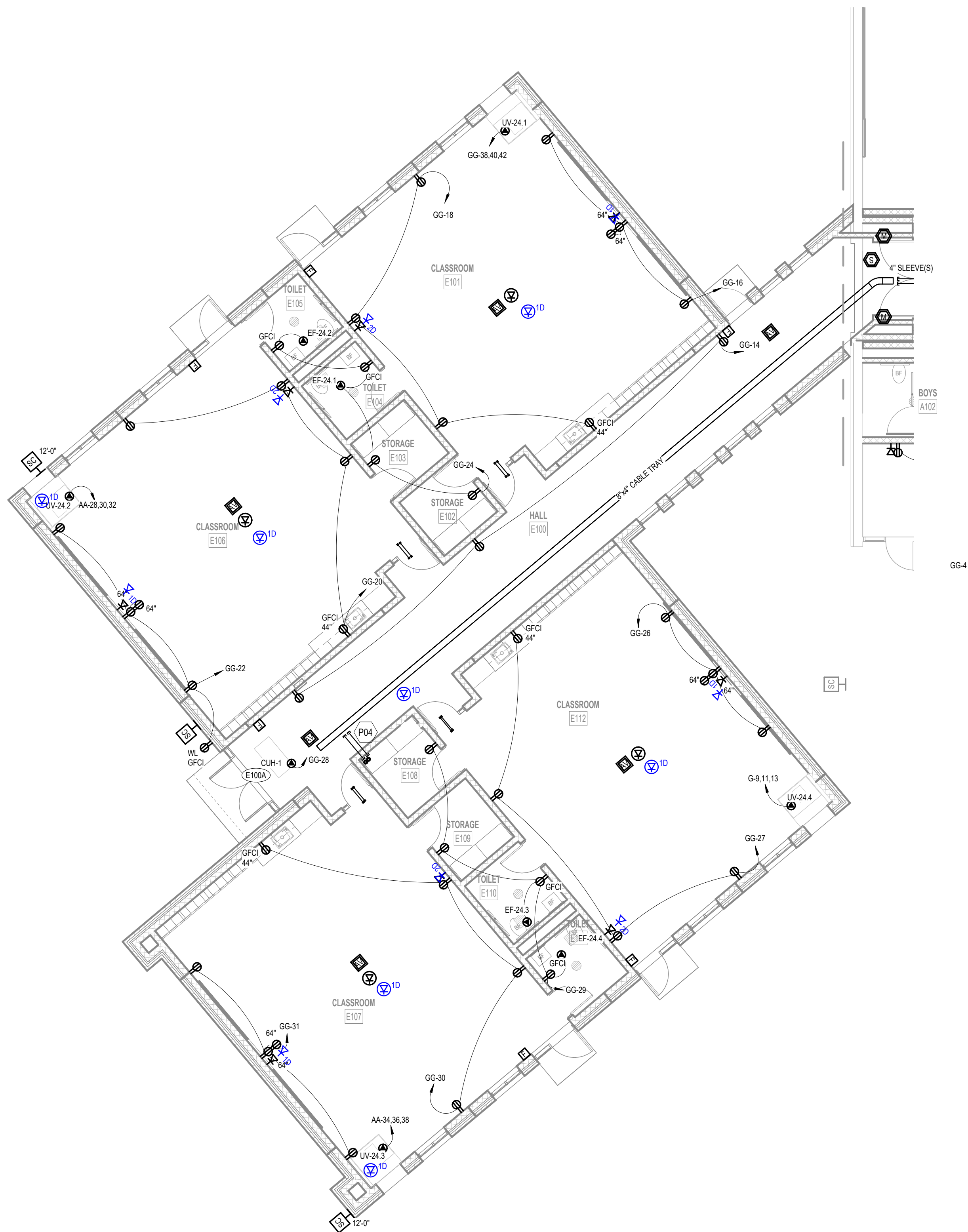
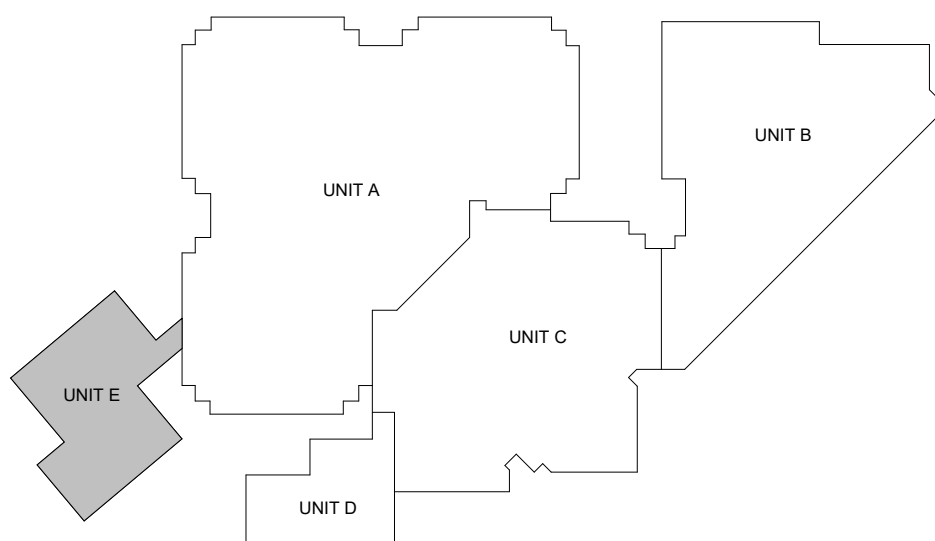
E2.1D

## POWER &amp; COMMUNICATION GENERAL NOTES

- REFER TO ELECTRICAL GENERAL NOTES ON SHEET **E001**.
- REFER TO CODE COMPLIANCE PLAN FOR LOCATIONS AND RATINGS OF VERTICAL AND HORIZONTAL BUILDING ASSEMBLIES. PROVIDE APPROPRIATE FIRESTOPPING SYSTEMS PER SPECIFICATIONS TO MEET ALL APPLICABLE CODES.
- ALL GENERAL USE 15- AND 20-AMPERE, 125- AND 250-VOLT NON-LOCKING RECEPTACLES SHALL BE TAMPER-RESISTANT TYPE. REFER TO NEC 408.12 AND SPECIFICATION SECTION 26.27.26.
- PROVIDE 120VAC POWER FOR ALL SMOKE DAMPERS AND COMBINATION FIRE/SMOKE DAMPERS.
  - REFER TO MECHANICAL/HVAC DRAWINGS FOR LOCATIONS AND QUANTITIES OF DAMPERS.
  - CONNECT TO DEDICATED 20A BRANCH CIRCUIT (WITH BREAKER LOCK-ON ACCESSORY) IN LOCAL PANELBOARD FOR DAMPERS(S) IN EACH AREA (DAMPERS MAY BE GROUPED ON EACH CIRCUIT).
  - TERMINATE W/ BOX-COVER FUSIBLE DISCONNECT SWITCH AT EACH DAMPER.
  - PROVIDE FIRE ALARM DUCT SMOKE DETECTOR WITHIN 5 FEET OF EACH DAMPER UNLESS COVERED BY ANOTHER DUCT DETECTOR WITHIN 5 FEET.
  - PROVIDE FIRE ALARM ADDRESSABLE RELAY(S) FOR INTERLOCKING DAMPER W/ CORRESPONDING HVAC UNIT(S) PER CODE REQUIREMENTS.
- PROVIDE BOX-COVER FUSIBLE DISCONNECT SWITCH (ON BUILDING INTERIOR IN ACCESSIBLE LOCATION) FOR EACH SMALL (1/2-1 HP) MECHANICAL AND/OR PLUMBING EQUIPMENT MOTOR LOAD WHERE MORE THAN ONE UNIT IS CONNECTED TO A COMMON BRANCH CIRCUIT. TYPICAL EQUIPMENT TYPES INCLUDE BUT ARE NOT LIMITED TO CABINET HEATERS, DAMPERS, EXHAUST FANS, FAN COIL UNITS, PUMPS, UNIT HEATERS, VAV BOXES, ETC.
- DESIGNATED CABLEING PATHWAYS (CONDUITS, CABLE TRAYS, PENETRATION SLEEVES, ETC.) SHALL BE RESERVED FOR DIV. 27 COMMUNICATIONS CABLEING AND DIV. 28 SAFETY/SECURITY CABLEING ONLY. OTHER CABLEING TYPES, SUCH AS DIV. 23 CONTROLS, DIV. 25 CONTROLS, AND ARCHITECTURAL EQUIPMENT CABLEING SHALL BE SUPPORTED AND SLEEVED BY OTHER INDEPENDENT PATHWAYS, HANGERS, AND SUPPORTS.
- CONSOLIDATE ALL POWER SUPPLIES REQUIRED FOR ELECTRONIC DOOR HARDWARE (REF. SECTION 08.71.00) TO CENTRAL LOCATION(S) ADJACENT TO DESIGNATED ACCESS CONTROL EQUIPMENT LOCATION(S). CONNECT ALL POWER SUPPLIES TO DEDICATED LOCAL STANDBY POWER SYSTEM BRANCH CIRCUIT(S) AS DESIGNATED FOR CONTINUED OPERATION UNDER LOSS OF UTILITY POWER(S).

## ELECTRICAL KEYNOTES

	P04	STUB-UP SITE COMM. CONDUIT TO ABOVE 7' FOR INCOMING FIBER AND COMM. UTILITIES. STUB SLEEVES TO CABLE TRAY. COORDINATE WITH TECHNOLOGY CONTRACTOR. REFER TO ELECTRICAL SITE PLAN.
--	-----	--

UNIT 'E' FIRST FLOOR POWER & COMMUNICATIONS PLAN  
1/8" = 1'-0"

KEY PLAN

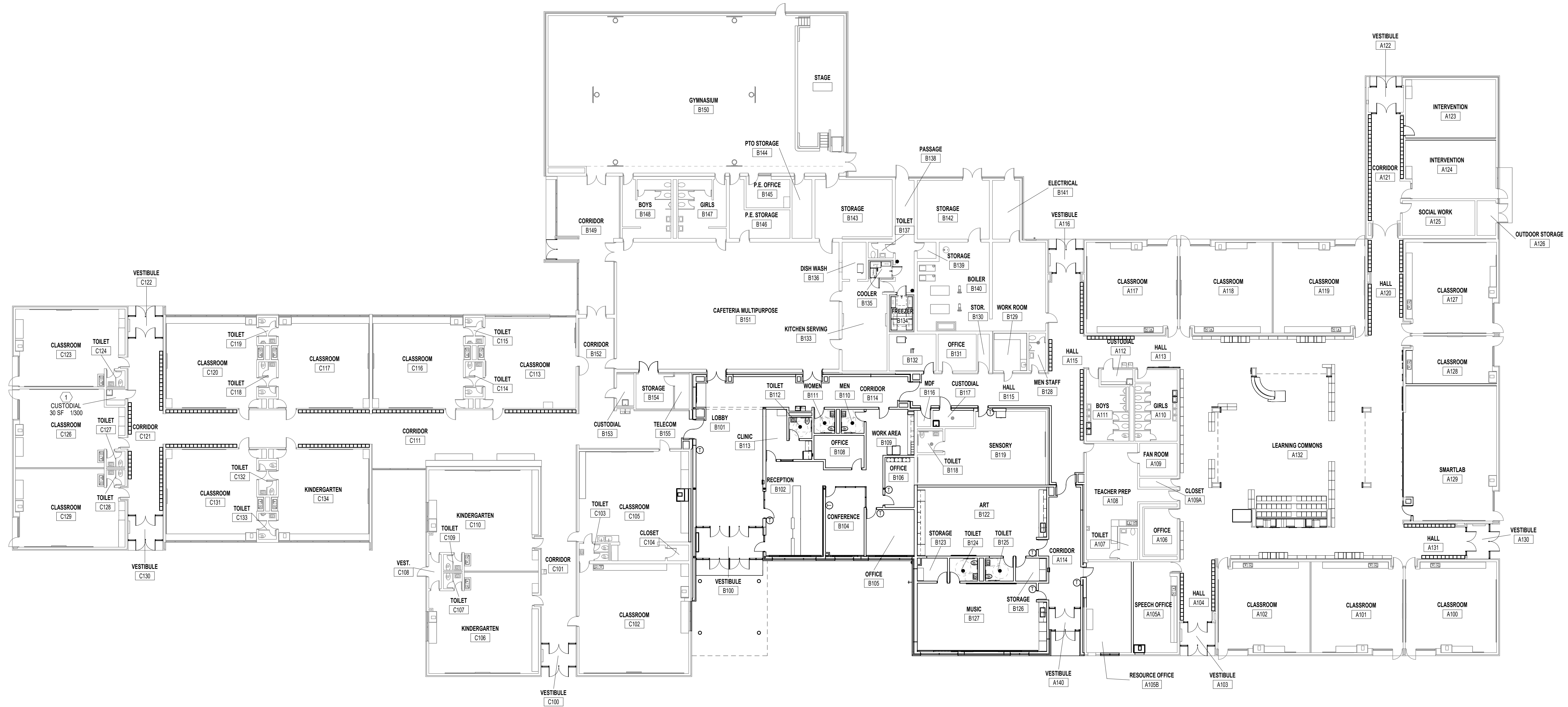
## ISSUANCES

11.05.2024 BIDS &  
CONSTRUCTIONDRAWN NTM  
REVIEWED PRH

PROJECT NO. 5-5509

NO PART OF THIS DRAWING MAY BE  
USED OR REPRODUCED IN ANY FORM  
OR BY ANY MEANS, OR STORED IN A  
DATA BASE OR RETRIEVAL SYSTEM,  
WITHOUT PRIOR WRITTEN  
PERMISSION OF  
GMB COPYRIGHT © 2024  
ALL RIGHTS RESERVEDUNIT 'E' FIRST FLOOR POWER  
& COMMUNICATIONS PLAN

E2.1E



← OVERALL PLAN  
1/16" = 1'-0"

ISSUANCES  
10.10.2024 BIDS & CONSTRUCTION

DRAWN AGS  
REVIEWED DMG

PROJECT NO. 5-5507

NO PART OF THIS DRAWING MAY BE  
USED OR REPRODUCED IN ANY FORM  
OR BY ANY MEANS, OR STORED IN A  
DATA BASE OR RETRIEVAL SYSTEM,  
WITHOUT PRIOR WRITTEN  
PERMISSION OF

GMB COPYRIGHT © 2024  
ALL RIGHTS RESERVED

OVERALL PLAN



11.05.2024 BIDS &  
CONSTRUCTION

PROJECT NO. 5-55

NO PART OF THIS DRAWING MAY  
BE USED OR REPRODUCED IN ANY FORM  
OR BY ANY MEANS, OR STORED IN  
A DATA BASE OR RETRIEVAL SYSTEM  
WITHOUT PRIOR WRITTEN  
PERMISSION OF

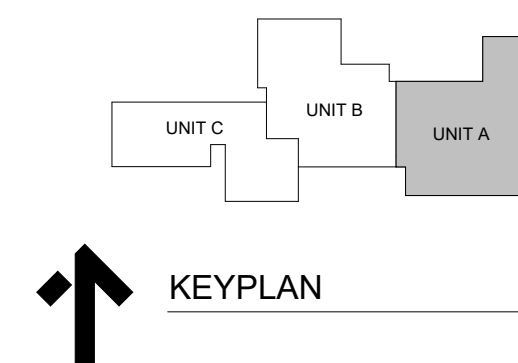
## E2.1A

2. REFER TO ELECTRICAL GENERAL NOTES ON SHEET **5001**
3. REFER TO CODE COMPLIANCE PLAN FOR LOCATIONS AND RATINGS OF VERTICAL AND HORIZONTAL BUILDING ASSEMBLIES. PROVIDE APPROPRIATE RATED PENETRATIONS TO MAINTAIN RATED RATING.
4. ALL GENERAL ISSUE 15-5 AND 20-AMPIRE 125- AND 250-VOLT NON-LOADING TYPE CIRCUITS SHALL BE PROVIDED WITH RESISTANT TYPE NOT EXCEEDING 1/8" SPECIFICATION SECTION 28 27 26.
5. PROVIDE 120VAC POWER FOR ALL SMOKE DAMPERS AND COMBINATION SMOKE/HEAT DETECTORS:
  - A. REFER TO MECHANICAL/HVAC DRAWINGS FOR LOCATIONS AND RATINGS
  - B. CONNECT TO DESIGNATED 0-4 BRANCH CIRCUIT (WITH BREAKER-LOAD ON CIRCUIT) LOCAL PULL BOXES OR EQUIPMENT ENCLOSURES (DAMPERS MAY BE DEROGATED ON ANY CIRCUIT)
  - C. PROVIDE 120V BOX-CONNECTED DISCONNECT SWITCH AT EACH DAMPER
  - D. PROVIDE 3/4" ALUMINUM DUCT SMOKE DETECTOR WITHIN 5 FEET OF EACH DAMPER
  - E. PROVIDE FIRE ALARM ADDRESSABLE RELAYS FOR INTERLOCKING DAMPERS TO FIRE ALARM CONTROL UNIT
6. PROVIDE BOX-CONNECTED FIRE DISCONNECT SWITCH ON BUILDING INTERIOR ACCESSIBLE LOCATION FOR EACH SMALL (6-12 HP) MECHANICAL AND ELECTRICAL EQUIPMENT WITH 15-5 AMPERE CIRCUIT BREAKER. PROVIDE ACCESS TO A COMMON BRANCH CIRCUIT. TYPICAL EQUIPMENT TYPES INCLUDE: REFRIGERATION, AIR CONDITIONING, POWER SYSTEM EXHAUST FANS, FAN COIL UNITS, PUMPS, UNIT HEATERS, VAV BOXES, ETC.
7. DESIGNATED CABLE TRAYS/CONDUITS, CABLE TRAYS, PENETRATION THROUGH ROOF, PENETRATION THROUGH WALLS, PENETRATION THROUGH FLOOR, AND ON 2ND, 3RD SAFETY/SURVEILLANCE CABLE ONLY. OTHER CABLE TYPES, SUCH AS DATA, TELEPHONE, COAXIAL, AND VIDEO, SHALL BE PROVIDED BY OTHER EQUIPMENT. CABLE SHALL BE SUPPORTED AND SLEAVED BY OTHER INDEPENDENT PARTNERS, HANGERS, AND SUPPORTS.
8. CONSIDER DATA ALL POWER SUPPLIES REQUIRED FOR ELECTRIC DOWNDRAFT FAN RELOCATION. PROVIDE ELECTRICAL CONNECTIONS ADJACENT TO DESIGNATED ACCESS CONTROL EQUIPMENT LOCATIONS. CONNECT ALL POWER SUPPLIES TO DESIGNATED LOCAL ASSEMBLY POWER SYSTEM BRANCH CIRCUIT(S) AS DESIGNATED FOR CONTINUED OPERATION UNDER LOCK OUT.

ELECTRICAL KEYNOTES	
P02	RE-WORK AND EXTEND ALL CIRCUITS TO NEW PANELBOARD LOCATION. INTERCEPT CIRCUITS ABOVE CEILING. FOR EXISTING UNDERGROUND CIRCUITS PROVIDE JUNCTION BOXES WITH FIRESTOPPING TO MAINTAIN RATED WALL.
P03	RE-WORK AND EXTEND LOCAL 120V CIRCUIT FROM DEMOLITION FOR NEW RECEPTACLE LOCATIONS
P04	PROVIDE NEW 120/240V 1PH 3W, 225A MLO, 42 SPACE PANELBOARD TO REPLACE EXISTING. FLUSH MOUNT IN NEW LOCATION. PROVIDE 20A/1P CIRCUIT BREAKER IN ALL SPACES.



UNIT 'A' FIRST FLOOR POWER & COMMUNICATIONS PLAN

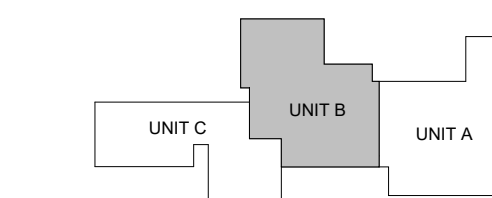


## POWER &amp; COMMUNICATION GENERAL NOTES

- REFER TO ELECTRICAL GENERAL NOTES ON SHEET **EW01**
- REFER TO CODE COMPLIANCE PLAN FOR LOCATIONS AND RATINGS OF VERTICAL AND HORIZONTAL BUILDING ASSEMBLIES. PROVIDE APPROPRIATE FIRESTOPPING SYSTEMS PER SPECIFICATIONS TO MEET ALL APPLICABLE CODES.
- ALL GENERAL USE 15- AND 20-AMPERE, 125- AND 250-VOLT NON-LOCKING RECEPTACLES SHALL BE TAMPER-RESISTANT TYPE. REFER TO NEC 408.12 AND SPECIFICATION SECTION 26.27.26.
- PROVIDE 120VAC POWER FOR ALL SMOKE DAMPERS AND COMBINATION FIRE/SMOKE DAMPERS:
  - REFER TO MECHANICAL/HVAC DRAWINGS FOR LOCATIONS AND QUANTITIES OF DAMPERS
  - CONNECT TO DEDICATED 20A BRANCH CIRCUIT (WITH BREAKER LOCK-ON ACCESSORY) IN LOCAL PANELBOARD FOR DAMPERS) IN EACH AREA (DAMPERS MAY BE GROUPED ON EACH CIRCUIT).
  - TERMINATE W/ BOX-COVER FUSIBLE DISCONNECT SWITCH AT EACH DAMPER.
  - PROVIDE FIRE ALARM DUCT SMOKE DETECTOR WITHIN 5 FEET OF EACH DAMPER UNLESS COVERED BY ANOTHER DUCT DETECTOR (WITHIN 5 FEET).
  - PROVIDE FIRE ALARM ADDRESSABLE RELAY(S) FOR INTERLOCKING DAMPER W/ CORRESPONDING HVAC UNIT(S) PER CODE REQUIREMENTS.
- PROVIDE BOX-COVER FUSIBLE DISCONNECT SWITCH ON BUILDING INTERIOR IN ACCESSIBLE LOCATION FOR EACH SMALL (< 12 HP) MECHANICAL AND/OR PLUMBING EQUIPMENT MOTOR LOAD WHERE MORE THAN ONE UNIT IS CONNECTED TO A COMMON BRANCH CIRCUIT. TYPICAL EQUIPMENT TYPES INCLUDE BUT ARE NOT LIMITED TO CABINET HEATERS, DAMPERS, EXHAUST FANS, FAN COIL UNITS, PUMPS, UNIT HEATERS, VAV BOXES, ETC.
- DESIGNATED CABLEING PATHWAYS (CONDUITS, CABLE TRAYS, PENETRATION SLEEVES, ETC.) SHALL BE RESERVED FOR DIV. 27 COMMUNICATIONS CABLEING AND DIV. 28 SAFETY/SECURITY CABLEING ONLY. OTHER CABLEING TYPES, SUCH AS DIV. 23 CONTROLS, DIV. 26 CONTROLS, AND ARCHITECTURAL EQUIPMENT CABLEING SHALL BE SUPPORTED AND SLEEVED BY OTHER INDEPENDENT PATHWAYS, HANGERS, AND SUPPORTS.
- CONSOLIDATE ALL POWER SUPPLIES REQUIRED FOR ELECTRONIC DOOR HARDWARE (REF. SECTION 08.71.00) TO CENTRAL LOCATION(S) ADJACENT TO DESIGNATED ACCESS CONTROL EQUIPMENT LOCATION(S). CONNECT ALL POWER SUPPLIES TO DEDICATED LOCAL (STANDBY POWER SYSTEM) BRANCH CIRCUIT(S) AS DESIGNATED FOR CONTINUED OPERATION UNDER LOSS OF UTILITY POWER.

## ELECTRICAL KEYNOTES

P01	DISCONNECT, RECONNECT AND EXTEND EXISTING CIRCUIT TO MECHANICAL EQUIPMENT
P02	RE-WORK AND EXTEND ALL CIRCUITS TO NEW PANELBOARD LOCATION. INTERCEPT CIRCUITS ABOVE CEILING. FOR EXISTING UNDERGROUND CIRCUITS PROVIDE JUNCTION BOXES WITH FIRESTOPPING TO MAINTAIN RATED WALL.
P04	PROVIDE NEW 120/240V 1PH 3W, 225A MLO, 42 SPACE PANELBOARD TO REPLACE EXISTING. RUSH MOUNT IN NEW LOCATION. PROVIDE 20A 1P CIRCUIT BREAKERS IN ALL SPACES.

UNIT 'B' FIRST FLOOR POWER & COMMUNICATIONS PLAN  
1/8" = 1'-0"

KEYPLAN

## ISSUANCES

11.05.2024 BIDS &amp; CONSTRUCTION

DRAWN NTM  
REVIEWED PRH

PROJECT NO. 5-5507

NO PART OF THIS DRAWING MAY BE USED OR REPRODUCED IN ANY FORM OR BY ANY MEANS, OR STORED IN A DATA BASE OR RETRIEVAL SYSTEM, WITHOUT PRIOR WRITTEN PERMISSION OF GMB COPYRIGHT © 2024 ALL RIGHTS RESERVED

UNIT 'B' FIRST FLOOR POWER &amp; COMMUNICATIONS PLAN

E2.1B



ISSUANCES	
11.05.2024	BIDS & CONSTRUCTION

DRAWN	NTM
REVIEWED	PRH

PROJECT NO. 5-5507  
NO PART OF THIS DRAWING MAY BE USED OR REPRODUCED IN ANY FORM OR BY ANY MEANS, OR STORED IN A DATA BASE OR RETRIEVAL SYSTEM, WITHOUT PRIOR WRITTEN PERMISSION OF  
GMB COPYRIGHT © 2024  
ALL RIGHTS RESERVED

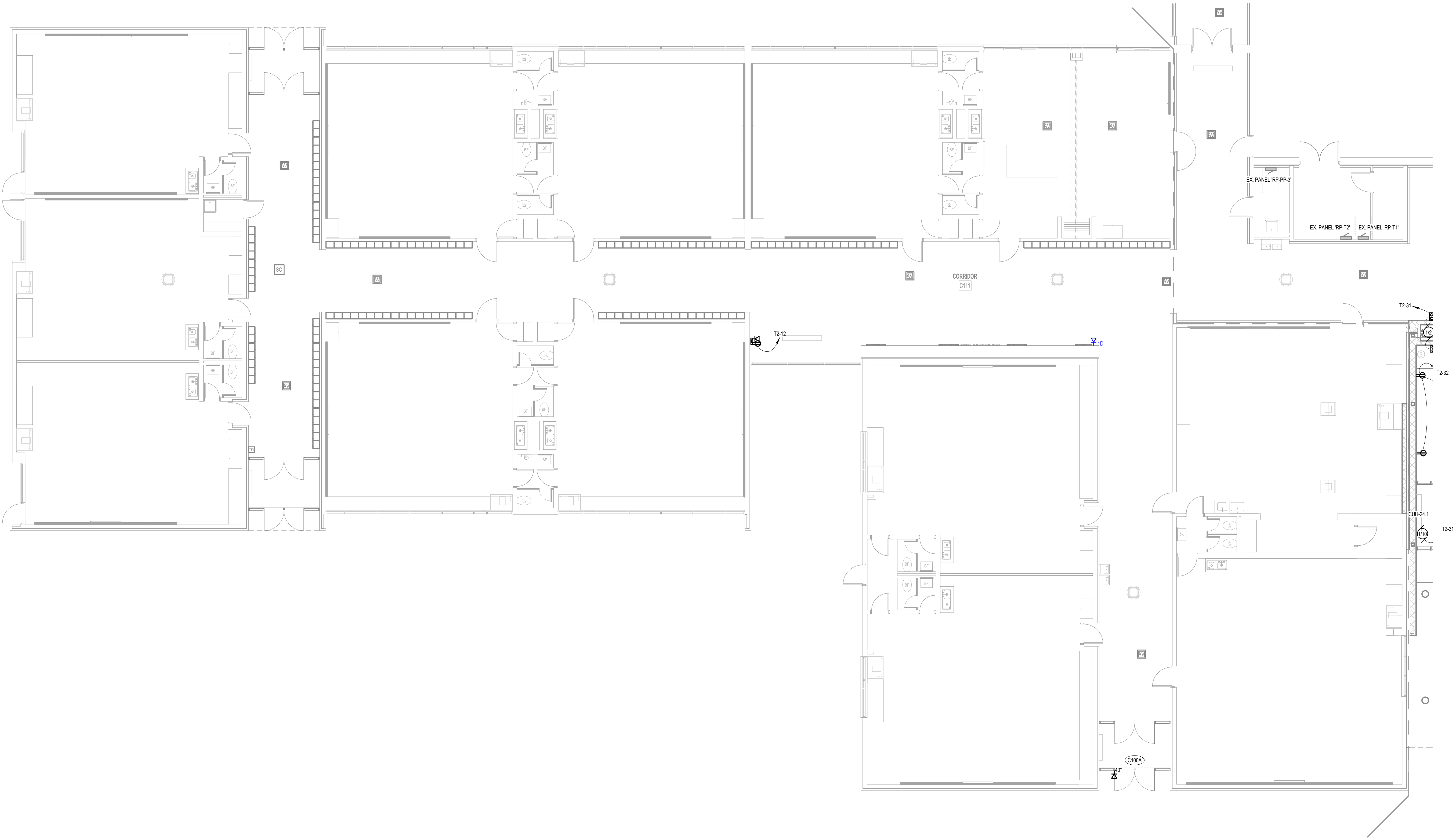
UNIT 'C' FIRST FLOOR POWER & COMMUNICATIONS PLAN

E2.1C

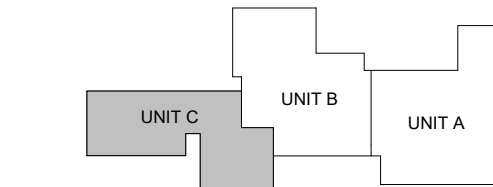
POWER & COMMUNICATION GENERAL NOTES

- REFER TO ELECTRICAL GENERAL NOTES ON SHEET **EN01**
- REFER TO CODE COMPLIANCE PLAN FOR LOCATIONS AND RATINGS OF VERTICAL AND HORIZONTAL BUILDING ASSEMBLIES. PROVIDE APPROPRIATE FIRESTOPPING SYSTEMS PER SPECIFICATIONS TO MEET ALL APPLICABLE CODES.
- ALL GENERAL USE 15- AND 20-AMPERE, 125- AND 250-VOLT NON-LOCKING RECEPTACLES SHALL BE TAMPER-RESISTANT TYPE. REFER TO NEC 408.12 AND SPECIFICATION SECTION 26.27.26.
- PROVIDE 120VAC POWER FOR ALL SMOKE DAMPERS AND COMBINATION FIRE/SMOKE DAMPERS:
  - REFER TO MECHANICAL/HVAC DRAWINGS FOR LOCATIONS AND QUANTITIES OF DAMPERS.
  - CONNECT TO DEDICATED 20A BRANCH CIRCUIT (WITH BREAKER LOCK-ON ACCESSORY) IN LOCAL PANELBOARD FOR DAMPERS) IN EACH AREA (DAMPERS MAY BE GROUPED ON EACH CIRCUIT).
  - TERMINATE W/ BOX COVER FUSIBLE DISCONNECT SWITCH AT EACH DAMPER.
  - PROVIDE FIRE ALARM DUCT SMOKE DETECTOR WITHIN 5 FEET OF EACH DAMPER UNLESS COVERED BY ANOTHER DETECTOR WITHIN 5 FEET.
  - PROVIDE FIRE ALARM ADDRESSABLE RELAY(S) FOR INTERLOCKING DAMPER W/ CORRESPONDING HVAC UNIT(S) PER CODE REQUIREMENTS.
- PROVIDE BOX COVER FUSIBLE DISCONNECT SWITCH ON BUILDING INTERIOR IN ACCESSIBLE LOCATION FOR EACH SMALL (< 1/2 HP) MECHANICAL AND/OR PLUMBING EQUIPMENT MOTOR LOAD WHERE MORE THAN ONE UNIT IS CONNECTED TO A COMMON BRANCH CIRCUIT. TYPICAL EQUIPMENT TYPES INCLUDE BUT ARE NOT LIMITED TO CABINET HEATERS, DAMPERS, EXHAUST FANS, FAN COIL UNITS, PUMPS, UNIT HEATERS, VAV BOXES, ETC.
- DESIGNATED CABLEING PATHWAYS (CONDUITS, CABLE TRAYS, PENETRATION SLEEVES, ETC.) SHALL BE RESERVED FOR DIV. 27 COMMUNICATIONS CABLEING AND DIV. 28 SAFETY/SECURITY CABLEING ONLY. OTHER CABLEING TYPES, SUCH AS DIV. 21 CONTROLS, DIV. 26 CONTROLS, AND ARCHITECTURAL EQUIPMENT CABLEING SHALL BE SUPPORTED AND SLEEVED BY OTHER INDEPENDENT PATHWAYS, HANGERS, AND SUPPORTS.
- CONSOLIDATE ALL POWER SUPPLIES REQUIRED FOR ELECTRONIC DOOR HARDWARE (REF. SECTION 08.71.00) TO CENTRAL LOCATION(S) ADJACENT TO DESIGNATED ACCESS CONTROL EQUIPMENT LOCATION(S). CONNECT ALL POWER SUPPLIES TO DEDICATED LOCAL (STANDBY POWER SYSTEM BRANCH CIRCUIT(S)) AS DESIGNATED FOR CONTINUED OPERATION UNDER LOSS OF UTILITY POWER.

	ELECTRICAL KEYNOTES
---	---------------------



UNIT 'C' FIRST FLOOR POWER & COMMUNICATIONS PLAN  
1/8" = 1'-0"



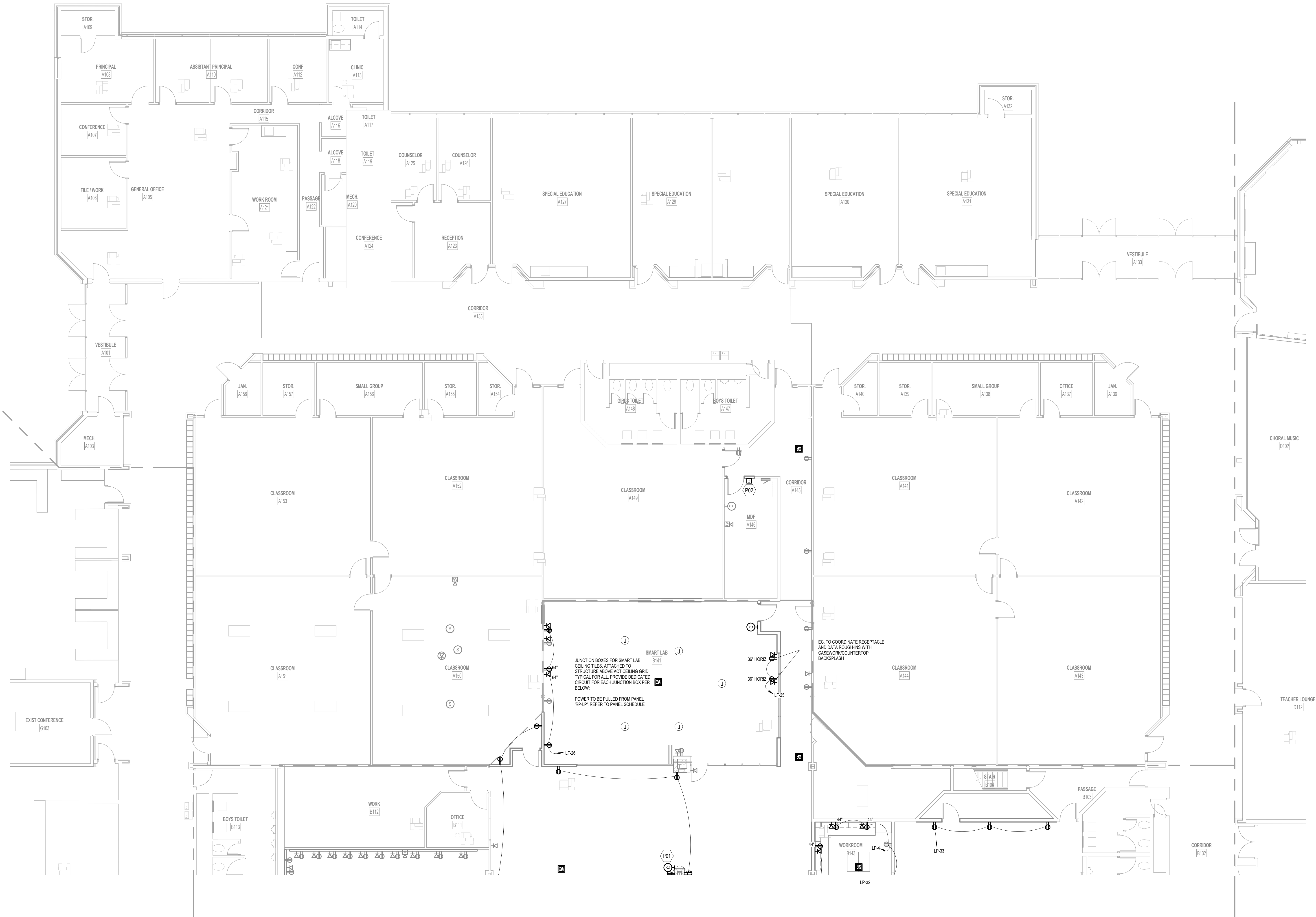
KEYPLAN

## POWER &amp; COMMUNICATION GENERAL NOTES

- REFER TO ELECTRICAL GENERAL NOTES ON SHEET **E0001**.
- REFER TO CODE COMPLIANCE PLAN FOR LOCATIONS AND RATINGS OF VERTICAL AND HORIZONTAL BUILDING ASSEMBLIES. PROVIDE APPROPRIATE FIRESTOPPING SYSTEMS PER SPECIFICATIONS TO MEET ALL APPLICABLE CODES.
- ALL GENERAL USE 15- AND 20-AMPERE, 125- AND 250-VOLT NON-LOCKING RECEPTACLES SHALL BE TAMPER-RESISTANT TYPE. REFER TO NEC 408.12 AND SPECIFICATION SECTION 26 27 26.
- PROVIDE 120VAC POWER FOR ALL SMOKE DAMPERS AND COMBINATION FIRE/SMOKE DAMPERS.
  - REFER TO MECHANICAL/HVAC DRAWINGS FOR LOCATIONS AND QUANTITIES OF DAMPERS.
  - CONNECT TO DEDICATED 20A BRANCH CIRCUIT (WITH BREAKER LOCK-ON ACCESSORY) IN LOCAL PANEL BOARD FOR DAMPERS(S) IN EACH AREA (DAMPERS MAY BE GROUPED ON EACH CIRCUIT).
  - TERMINATE W/ BOX-COVER FUSIBLE DISCONNECT SWITCH AT EACH DAMPER.
  - PROVIDE FIRE ALARM DUCT SMOKE DETECTOR WITHIN 5 FEET OF EACH DAMPER UNLESS COVERED BY ANOTHER DUCT DETECTOR WITHIN 5 FEET.
  - PROVIDE FIRE ALARM ADDRESSABLE RELAY(S) FOR INTERLOCKING DAMPER W/ CORRESPONDING HVAC UNIT(S) PER CODE REQUIREMENTS.
- PROVIDE BOX-COVER FUSIBLE DISCONNECT SWITCH (ON BUILDING INTERIOR IN ACCESSIBLE LOCATION FOR EACH SMALL 1/2 12" HP MECHANICAL AND/OR PLUMBING EQUIPMENT MOTOR LOAD WHERE MORE THAN ONE UNIT IS CONNECTED TO A COMMON BRANCH CIRCUIT). TYPICAL EQUIPMENT TYPES INCLUDE BUT ARE NOT LIMITED TO CABINET HEATERS, DAMPERS, EXHAUST FANS, FAN COIL UNITS, PUMPS, UNIT HEATERS, VAV BOXES, ETC.
- DESIGNATED CABLE PATHWAYS (CONDUITS, CABLE TRAYS, PENETRATION SLEEVES, ETC.) SHALL BE RESERVED FOR DIV. 27 COMMUNICATIONS CABLEING AND DIV. 28 SAFETY/SECURITY CABLEING ONLY. OTHER CABLEING TYPES, SUCH AS DIV. 23 CONTROLS, DIV. 26 CONTROLS, AND ARCHITECTURAL EQUIPMENT CABLEING SHALL BE SUPPORTED AND SLEEVED BY OTHER INDEPENDENT PATHWAYS, HANDERS, AND SUPPORTS.
- CONSOLIDATE ALL POWER SUPPLIES REQUIRED FOR ELECTRONIC DOOR HARDWARE (REF. SECTION 08 71 00) TO CENTRAL LOCATIONS) ADJACENT TO DESIGNATED ACCESS CONTROL EQUIPMENT LOCATIONS). CONNECT ALL POWER SUPPLIES TO DESIGNATED STANDBY POWER SYSTEM BRANCH CIRCUIT(S) AS DESIGNATED FOR CONTINUED OPERATION UNDER LOSS OF UTILITY POWER.

## ELECTRICAL KEYNOTES

P01	REINSTALL PRESERVED CLOCK IN THIS LOCATION
P02	REINSTALL FIRE ALARM PULL STATION IN THIS LOCATION



## UNIT 'A' FIRST FLOOR POWER &amp; COMMUNICATIONS PLAN

1/8" = 1'-0"

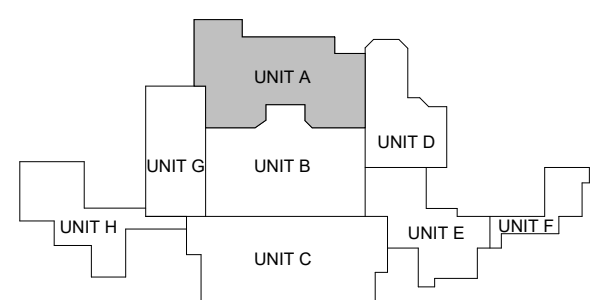
## ISSUANCES

01.15.2025 BIDS &  
CONSTRUCTION

DRAWN NTM

REVIEWED PRH

PROJECT NO. 5-5512

NO PART OF THIS DRAWING MAY BE  
USED OR REPRODUCED IN ANY FORM  
OR BY ANY MEANS, OR STORED IN A  
DATA BASE OR RETRIEVAL SYSTEM,  
WITHOUT PRIOR WRITTEN  
PERMISSION OFGMB COPYRIGHT © 2025  
ALL RIGHTS RESERVEDUNIT 'A' FIRST FLOOR POWER  
& COMMUNICATIONS PLAN

## KEYPLAN

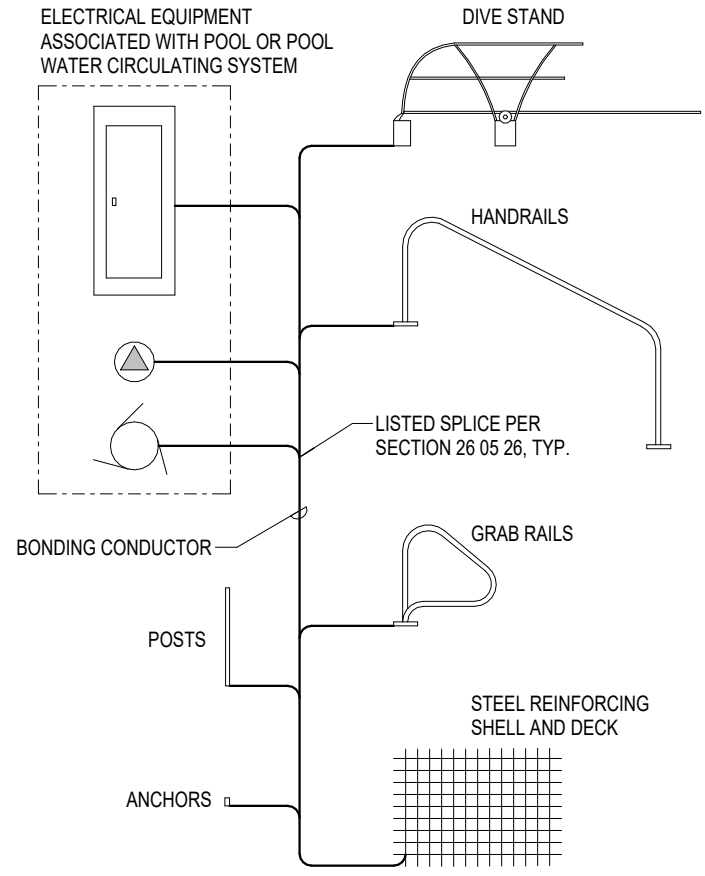
E2.1A



[illegible]

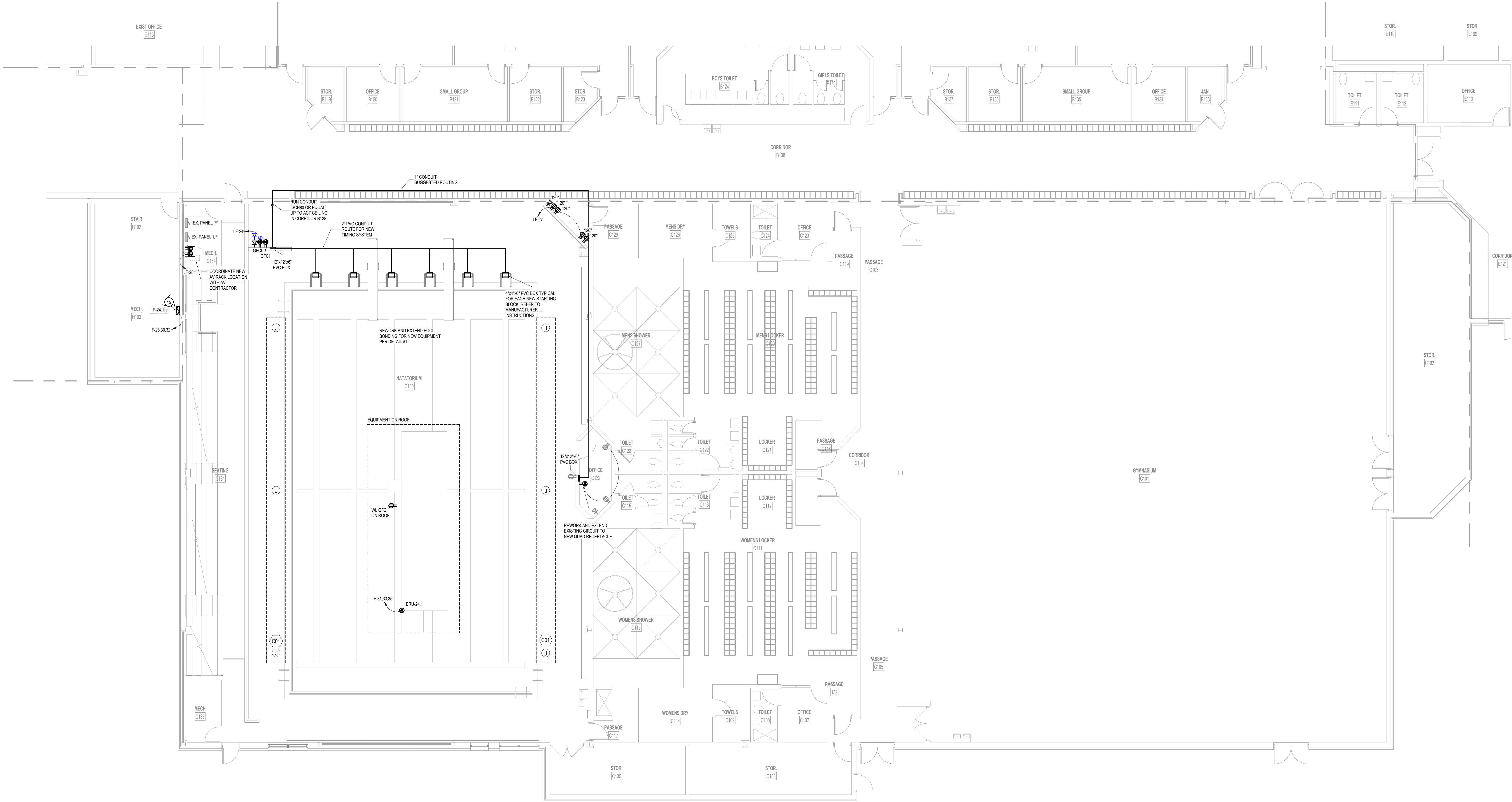
POWER & COMMUNICATION GENERAL NOTES

1. REFER TO ELECTRICAL GENERAL NOTES ON SHEET E201.
2. REFER TO CODE COMPLIANCE PLAN FOR LOCATIONS AND RATINGS OF VERTICAL AND HORIZONTAL BUILDING ASSEMBLIES. PROVIDE APPROPRIATE FIRESTOPPING SYSTEMS PER SPECIFICATIONS TO MEET ALL APPLICABLE CODES.
3. ALL GENERAL USE 15- AND 20-AMPERE, 125- AND 250-VOLT NON-LOCKING RECEPTACLES SHALL BE TAMPER-RESISTANT TYPE. REFER TO NEC 406.12 AND SPECIFICATION SECTION 28.27.26.
4. PROVIDE 120VAC POWER FOR ALL SMOKE DAMPERS AND COMBINATION FIRE-SMOKE DAMPERS.
  - A. REFER TO MECHANICAL/HVAC DRAWINGS FOR LOCATIONS AND QUANTITIES OF DAMPERS.
  - B. CONNECT TO DEDICATED 20A BRANCH CIRCUIT (WITH BREAKER LOCK-ON ACCESSORY) IN LOCAL PANELBOARD FOR DAMPER(S) IN EACH AREA (DAMPERS MAY BE GROUPED ON EACH CIRCUIT).
  - C. TERMINATE W/ BOX-COVER FUSIBLE DISCONNECT SWITCH AT EACH DAMPER.
  - D. PROVIDE FIRE ALARM DUCT SMOKE DETECTOR WITHIN 5 FEET OF EACH DAMPER (UNLESS COVERED BY ANOTHER DUCT DETECTOR WITHIN 5 FEET).
  - E. PROVIDE FIRE ALARM ADDRESSABLE RELAY(S) FOR INTERLOCKING DAMPER W/ CORRESPONDING HVAC UNIT(S) PER CODE REQUIREMENTS.
5. PROVIDE BOX-COVER FUSIBLE DISCONNECT SWITCH (ON BUILDING INTERIOR IN ACCESSIBLE LOCATION) FOR EACH SMALL (4-12 HP) MECHANICAL AND/OR PLUMBING EQUIPMENT MOTOR LOAD WHERE MORE THAN ONE UNIT IS CONNECTED TO A COMMON BRANCH CIRCUIT. TYPICAL EQUIPMENT TYPES INCLUDE BUT ARE NOT LIMITED TO: CABINET HEATERS, DAMPERS, EXHAUST FANS, FAN COIL UNITS, PUMPS, UNIT HEATERS, VAV BOXES, ETC.
6. DESIGNATED CABLEING PATHWAYS (CONDUITS, CABLE TRAYS, PENETRATION SLEEVES, ETC.) SHALL BE RESERVED FOR DIV. 27 COMMUNICATIONS CABLEING AND DIV. 28 SAFETY/SECURITY CABLEING ONLY. OTHER CABLEING TYPES, SUCH AS DIV. 23 CONTROLS, DIV. 26 CONTROLS, AND ARCHITECTURAL EQUIPMENT CABLEING SHALL BE SUPPORTED AND SLEEVED BY OTHER INDEPENDENT PATHWAYS, HANGERS, AND SUPPORTS.
7. CONSOLIDATE ALL POWER SUPPLIES REQUIRED FOR ELECTRONIC DOOR HARDWARE (REF. SECTION 08.71.00 TO CENTRAL LOCATIONS) ADJACENT TO DESIGNATED ACCESS CONTROL EQUIPMENT LOCATIONS). CONNECT ALL POWER SUPPLIES TO DEDICATED STANDBY POWER SYSTEM BRANCH CIRCUIT(S) AS DESIGNATED FOR CONTINUED OPERATION UNDER LOSS OF UTILITY POWER.

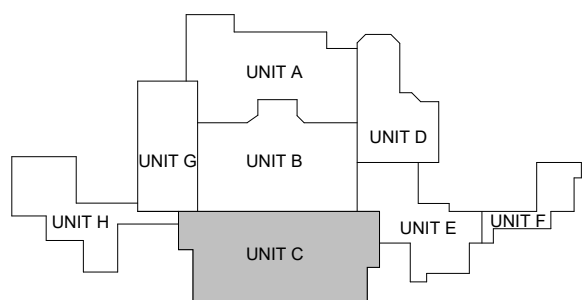


**BONDING GENERAL NOTE:**  
PROVIDE A SWIMMING POOL EQUIPOTENTIAL BONDING SYSTEM PER NEC 800.26 THE POOL AND ALL ASSOCIATED POOL WATER CIRCULATING SYSTEMS/EQUIPMENT THAT ARE PRESENT SHALL BE BONDED, INCLUDING BUT NOT LIMITED TO:  
• CONDUCTIVE POOL SHELLS  
• POOL PERIMETER DECK/SURFACES  
• METALLIC COMPONENTS OF THE POOL STRUCTURE  
• UNDERWATER LIGHTING  
• METAL FITTINGS (CUP ANCHORS, STATION/ON POST ANCHORS, WEDGE ANCHORS OF GRAB RAILS, POOL LIFT ANCHORS, DRAIN FITTINGS, ETC.)  
• ELECTRICAL EQUIPMENT  
• FIXED METAL PARTS: CABLE SHEATHS, RACEWAYS, PIPING, AWNINGS, FENCES, DOOR/WINDOW FRAMES, POOL LIFTS, ETC.)  
• POOL WATER WHERE NOT IN DIRECT CONNECTION WITH BONDED PARTS  
THE BONDING CONDUCTOR SHALL BE MINIMUM #8 AWG BARE SOLID COPPER. REFER TO NEC FOR FURTHER DETAILS AND EXCEPTIONS.

1  
E2.1C  
SWIMMING POOL EQUIPOTENTIAL BONDING DETAIL  
NOT TO SCALE



UNIT 'C' FIRST FLOOR POWER & COMMUNICATIONS PLAN  
1/8" = 1'-0"



KEYPLAN

ISSUANCES  
01.15.2025 BIDS & CONSTRUCTION

DRAWN NTM  
REVIEWED PRH

PROJECT NO. 5-5512

NO PART OF THIS DRAWING MAY BE USED OR REPRODUCED IN ANY FORM OR BY ANY MEANS, OR STORED IN A DATA BASE OR RETRIEVAL SYSTEM, WITHOUT PRIOR WRITTEN PERMISSION OF  
GMB COPYRIGHT © 2025  
ALL RIGHTS RESERVED

UNIT 'C' FIRST FLOOR POWER & COMMUNICATIONS PLAN

E2.1C



WOODHAVEN HIGH SCHOOL IMPROVEMENTS  
WOODHAVEN-BROWNSTOWN SCHOOL DISTRICT  
BROWNSTOWN, MICHIGAN

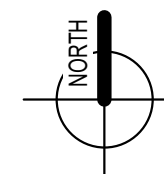
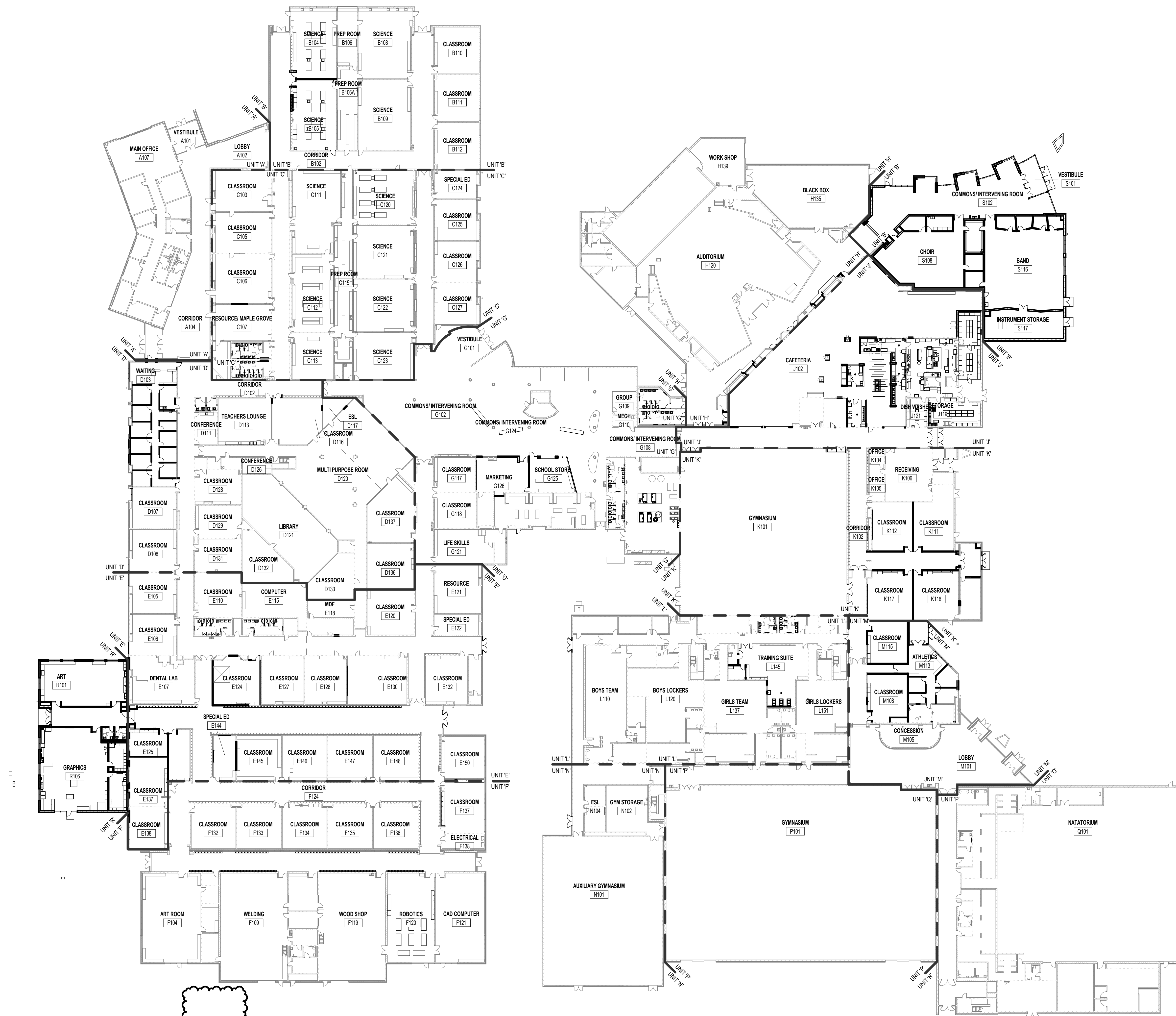
ISSUANCES	
11.09.2022	BIDS & CONSTRUCTION
12.19.2022	CONSTRUCTION SET
09.21.2023	BULLETIN 011

DRAWN	TLP
REVIEWED	DMG

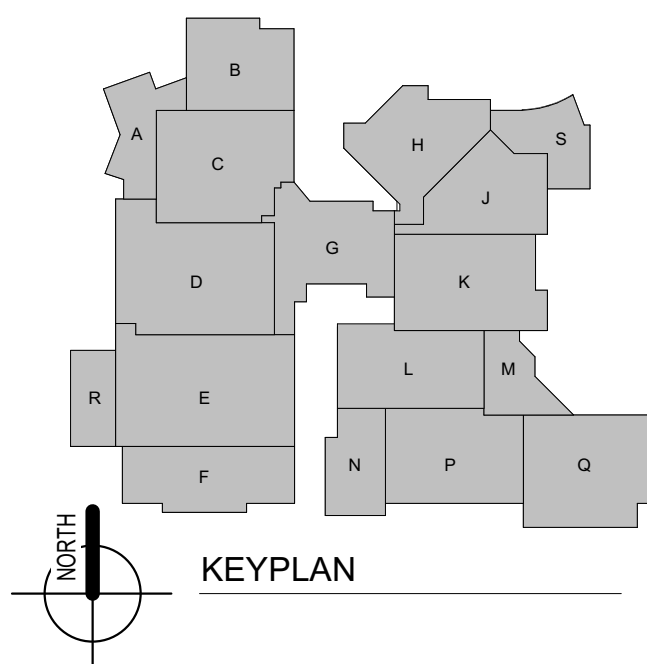
PROJECT NO.	5-5505
NO PART OF THIS DRAWING MAY BE USED OR REPRODUCED IN ANY FORM OR BY ANY MEANS, OR STORED IN A DATA BASE OR RETRIEVAL SYSTEM, WITHOUT PRIOR WRITTEN PERMISSION OF	
GMB COPYRIGHT © 2023 ALL RIGHTS RESERVED	

OVERALL FLOOR PLAN

A0.01



OVERALL FLOOR PLAN  
1/32" = 1'-0"

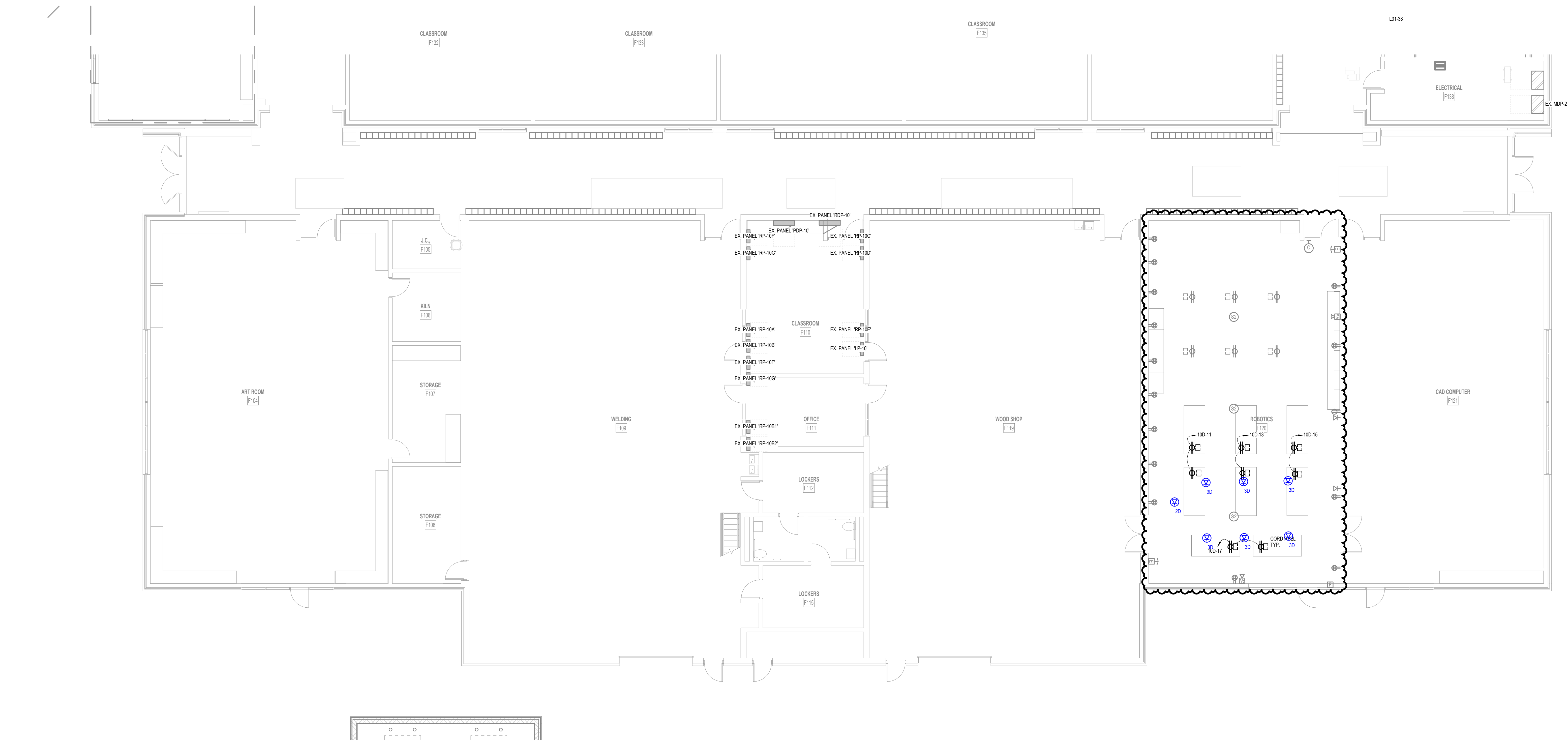
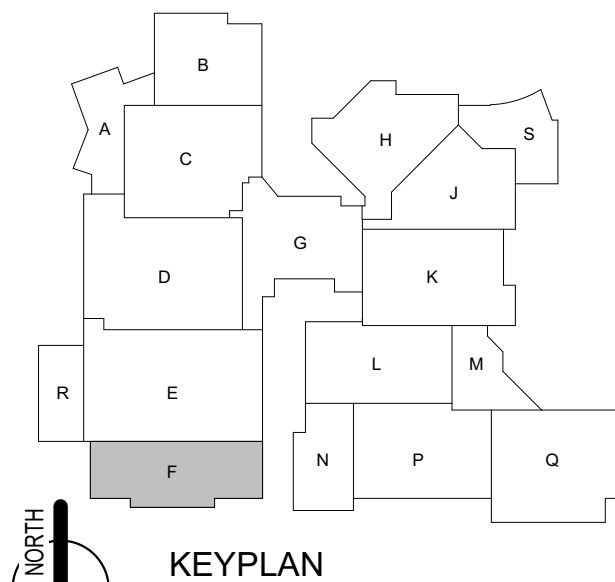


KEYPLAN

## POWER &amp; COMMUNICATION GENERAL NOTES

- REFER TO ELECTRICAL GENERAL NOTES [ON SHEET E01.01](#).
- REFER TO CODE COMPLIANCE PLAN FOR LOCATIONS AND RATINGS OF VERTICAL AND HORIZONTAL BUILDING ASSEMBLIES. PROVIDE APPROPRIATE FIRESTOPPING SYSTEMS PER SPECIFICATIONS TO MEET ALL APPLICABLE CODES.
- ALL 15- AND 20-AMPERE, 125- AND 250-VOLT NON-LOCKING RECEPTACLES SHALL BE TAMPER-RESISTANT TYPE; REFER TO NEC 406.12 AND SPECIFICATION SECTION 26.27.25.
- PROVIDE 120VAC POWER FOR ALL SMOKE DAMPERS AND COMBINATION FIRE-SMOKE DAMPERS.
  - REFER TO MECHANICAL/HVAC DRAWINGS FOR LOCATIONS AND QUANTITIES OF DAMPERS.
  - CONNECT TO DEDICATED 50A BRANCH CIRCUIT (WITH BREAKER LOCK-ON ACCESSORY) IN LOCAL PANELBOARD FOR DAMPERS(S) IN EACH AREA (DAMPERS MAY BE GROUPED ON EACH CIRCUIT).
  - TERMINATE W/ BOX-COVER FUSIBLE DISCONNECT SWITCH AT EACH DAMPER.
  - PROVIDE FIRE ALARM DUCT SMOKE DETECTOR WITHIN 5 FEET OF EACH DAMPER (UNLESS COVERED BY ANOTHER DUCT DETECTOR WITHIN 5 FEET).
  - PROVIDE FIRE ALARM ADDRESSABLE RELAYS FOR INTERLOCKING DAMPER W/ CORRESPONDING HVAC UNIT(S) PER CODE REQUIREMENTS.
- PROVIDE BOX-COVER FUSIBLE DISCONNECT SWITCH (ON BUILDING INTERIOR IN ACCESSIBLE LOCATION) FOR EACH SMALL (< 12 HP) MECHANICAL AND/OR PLUMBING EQUIPMENT MOTOR LOAD WHERE MORE THAN ONE UNIT IS CONNECTED TO A COMMON BRANCH CIRCUIT. TYPICAL EQUIPMENT TYPES INCLUDE BUT ARE NOT LIMITED TO: CABINET HEATERS, DAMPERS, EXHAUST FANS, FAN COIL UNITS, PUMPS, UNIT HEATERS, VAV BOXES, ETC.
- DESIGNATED CABLEING PATHWAYS (CONDUITS, CABLE TRAYS, PENETRATION SLEEVES, ETC.) SHALL BE RESERVED FOR DIV. 27 COMMUNICATIONS CABLEING AND DIV. 28 SAFETY/SECURITY CABLEING ONLY. OTHER CABLEING TYPES, SUCH AS DIV. 23 CONTROLS, DIV. 26 CONTROLS, AND ARCHITECTURAL EQUIPMENT CABLEING SHALL BE SUPPORTED AND SLEAVED BY OTHER INDEPENDENT PATHWAYS, HANGERS, AND SUPPORTS.
- CONSOLIDATE ALL POWER SUPPLIES REQUIRED FOR ELECTRONIC DOOR HARDWARE (REF. SECTION 07.10) TO CENTRAL LOCATION(S) ADJACENT TO DESIGNATED ACCESS CONTROL EQUIPMENT LOCATION(S). CONNECT ALL POWER SUPPLIES TO DEDICATED [LOCAL] STANDBY POWER SYSTEM [BRANCH CIRCUIT(S)] AS DESIGNATED FOR CONTINUED OPERATION UNDER LOSS OF UTILITY POWER.

## ELECTRICAL KEYNOTES

UNIT 'F' FIRST FLOOR POWER & COMMUNICATIONS PLAN  
1/8" = 1'-0"

## ISSUANCES

11.09.2022 BIDS & CONSTRUCTION  
11.22.2022 ADDENDUM 001  
12.19.2022 CONSTRUCTION SET  
04.27.2023 BULLETIN 006  
07.06.2023 BULLETIN 006 REV1

DRAWN NTM  
REVIEWED PBH

PROJECT NO. 5-5505

NO PART OF THIS DRAWING MAY BE USED OR REPRODUCED IN ANY FORM OR BY ANY MEANS, OR STORED IN A DATA BASE OR RETRIEVAL SYSTEM, WITHOUT PRIOR WRITTEN PERMISSION OF

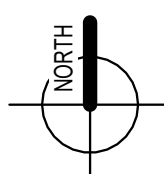
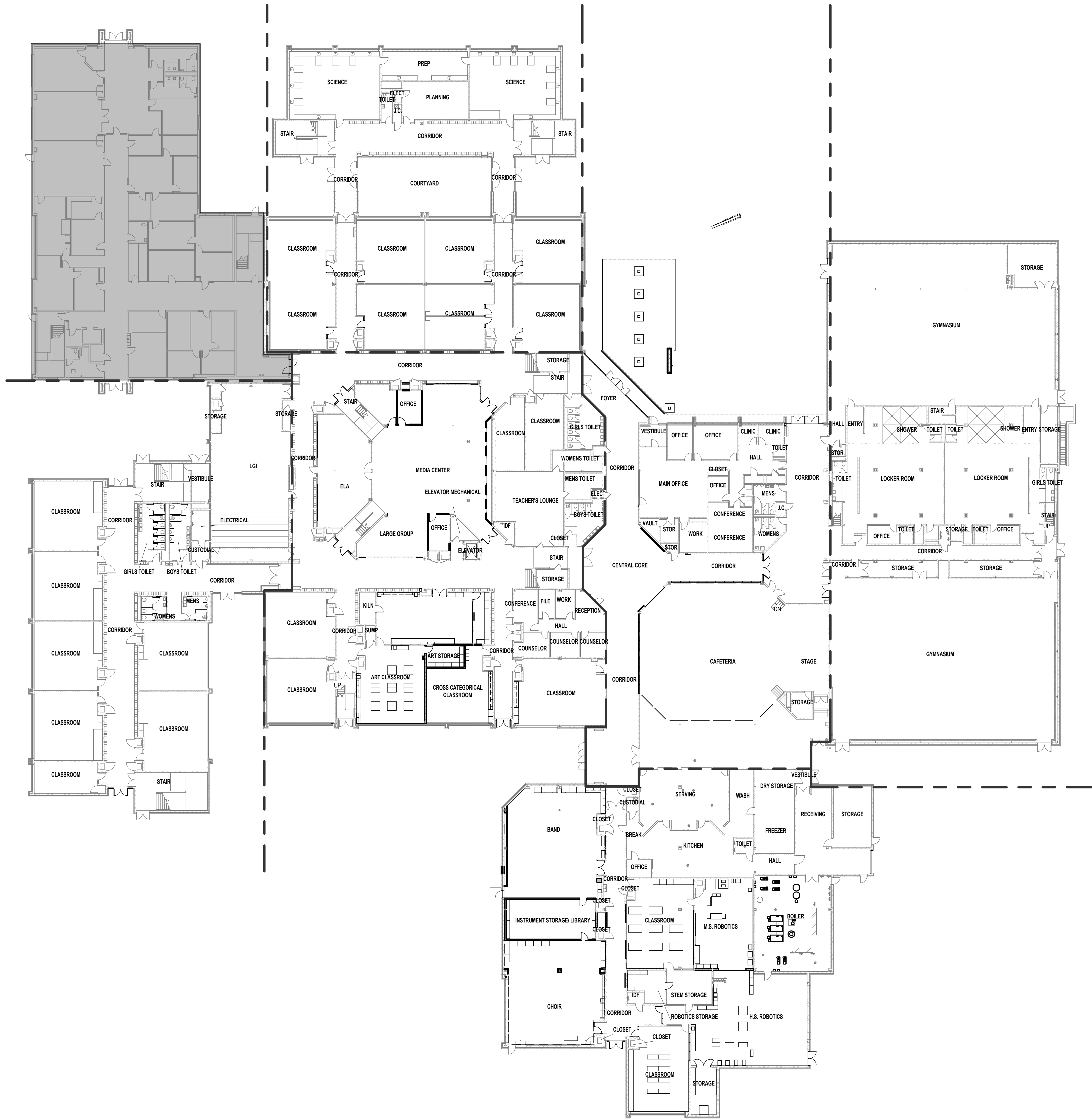
GMB COPYRIGHT © 2023  
ALL RIGHTS RESERVED

UNIT 'F' FIRST FLOOR POWER & COMMUNICATIONS PLAN

E2.1F

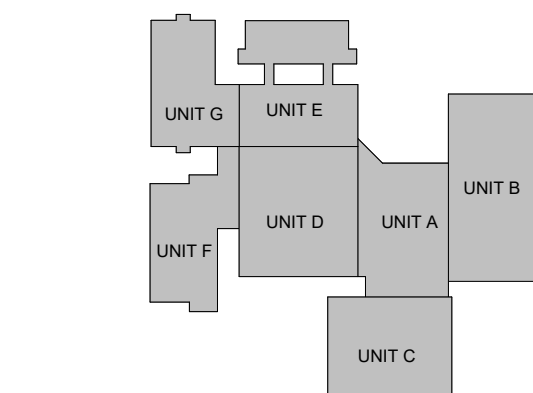


Autodesk Docs: 05-5506 Woodhaven Patrick Henry Building Improvements 05-5506A\_2022.rvt  
1/9/2024 10:31:09 AM



OVERALL FIRST FLOOR PLAN  
3/64" = 1'-0"

SCOPE LEGEND	
	AREA NOT IN SCOPE

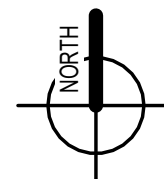


KEYPLAN

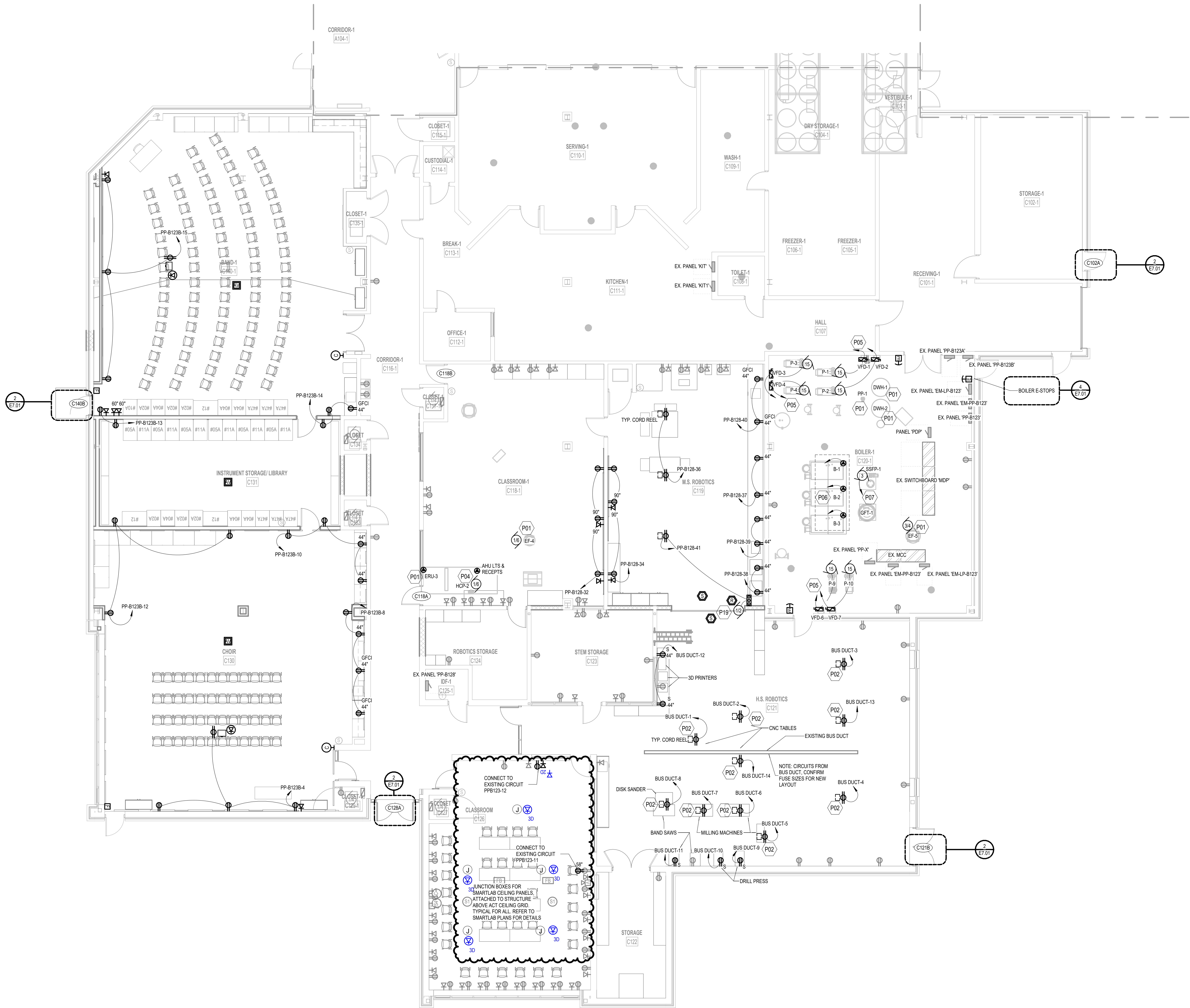
ISSUANCES	
11.15.2023	BIDS & CONSTRUCTION
01.16.2024	CONSTRUCTION SET

DRAWN	AGS / TLP
REVIEWED	DMG

PROJECT NO.	5-5506
NO PART OF THIS DRAWING MAY BE USED OR REPRODUCED IN ANY FORM OR BY ANY MEANS, OR STORED IN A DATA BASE OR RETRIEVAL SYSTEM, WITHOUT PRIOR WRITTEN PERMISSION OF	
GMB COPYRIGHT © 2023 ALL RIGHTS RESERVED	



UNIT 'C' FIRST FLOOR POWER & COMMUNICATIONS PLAN  
1/8" = 1'-0"



- POWER & COMMUNICATION GENERAL NOTES
- REFER TO ELECTRICAL GENERAL NOTES ON SHEET ED-01.
  - REFER TO CODE COMPLIANCE PLAN FOR LOCATIONS AND RATINGS OF VERTICAL AND HORIZONTAL BUILDING ASSEMBLIES. PROVIDE APPROPRIATE FIRESTOPPING SYSTEMS PER SPECIFICATIONS TO MEET ALL APPLICABLE CODES.
  - PROVIDE 120VAC POWER FOR ALL SMOKE DAMPERS AND COMBINATION FIRE/SMOKE DAMPERS.
    - REFER TO MECHANICAL/HVAC DRAWINGS FOR LOCATIONS AND QUANTITIES OF DAMPERS.
    - CONNECT TO DEDICATED 20A BRANCH CIRCUIT (WITH BREAKER LOCK-ON ACCESSORY) IN LOCAL PANEL BOARD FOR DAMPERS(S) IN EACH AREA (DAMPERS MAY BE GROUPED ON EACH CIRCUIT).
    - TERMINATE W/ BOX-COVER FUSIBLE DISCONNECT SWITCH AT EACH DAMPER.
    - PROVIDE FIRE ALARM DUCT SMOKE DETECTOR WITHIN 5 FEET OF EACH DAMPER (UNLESS COVERED BY ANOTHER DUCT DETECTOR WITHIN 5 FEET).
    - PROVIDE FIRE ALARM ADDRESSABLE RELAYS FOR INTERLOCKING DAMPER W/ CORRESPONDING HVAC UNIT(S) PER CODE REQUIREMENTS.
  - PROVIDE BOX-COVER FUSIBLE DISCONNECT SWITCH (ON BUILDING INTERIOR IN ACCESSIBLE LOCATION) FOR EACH SMALL (< 12 HP) MECHANICAL AND/OR PLUMBING EQUIPMENT MOTOR LOAD WHERE MORE THAN ONE UNIT IS CONNECTED TO A COMMON BRANCH CIRCUIT. TYPICAL EQUIPMENT TYPES INCLUDE BUT ARE NOT LIMITED TO: CABINET HEATERS, DAMPERS, EXHAUST FANS, FAN COIL UNITS, PUMPS, UNIT HEATERS, VAV BOXES, ETC.
  - DESIGNATED CABLEING PATHWAYS (CONDUITS, CABLE TRAYS, PENETRATION SLEEVES, ETC.) SHALL BE REFERRED TO DIV. 23 COMMUNICATIONS CABLING AND DIV. 28 SAFETY/SECURITY CABLING ONLY. OTHER CABLEING TYPES, SUCH AS DIV. 22 CONTROLS, DIV. 20 CONTROLS, AND ARCHITECTURAL EQUIPMENT CABLEING SHALL BE SUPPORTED AND SLEAVED BY OTHER INDEPENDENT PATHWAYS, HANGERS, AND SUPPORTS.

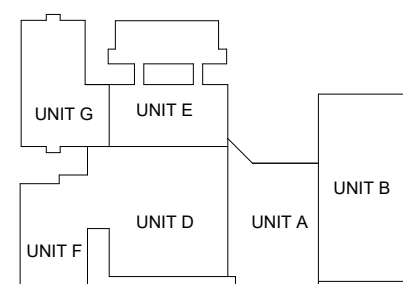
ELECTRICAL KEYNOTES	
P01	RE-WORK AND EXTEND EXISTING CIRCUIT FOR NEW EQUIPMENT.
P02	CORD DROPS FOR EQUIPMENT CONNECTIONS. COORDINATE EQUIPMENT LOCATIONS AND CORD DROP. RE-WORK AND EXTEND EXISTING CIRCUITS FROM BUS DUCT. MOVE DISCONNECTS FOR SHORT CIRCUIT RUNS. PROVIDE PENDANT CORD DROPS FROM CEILING. USE TYPE SUCOW JUNIOR HARS SERVICE CORD. TERMINATE AT JUNCTION BOX AND RECEPTACLE BOX WITH MESH CORD GRIPS AND LIQUID-TIGHT FITTINGS.
P04	RE-WORK AND EXTEND LOCAL 120VAC CIRCUIT FOR ACCESSORIES AND RECEPETS.
P05	PUMPS - PROVIDE NEW CIRCUITS TO EX. MCC BUCKET LOCATIONS. REMOVE STARTER FROM MCC BUCKET AND RE-WORK FOR CIRCUIT BREAKER FEEDER STYLE. 40A/3P CIRCUIT BREAKER. EXISTING MCC IS SIEMENS TIASTAR. REVISE LABELS.
P06	BOILERS - PROVIDE NEW CIRCUITS TO PP-X. PROVIDE NEW 20A/3P CIRCUIT BREAKERS TO REPLACE SPARES AND PREPARED SPACES. REVISE PANEL DIRECTORY.
P07	PUMP SSP-1 - PROVIDE NEW 20A CIRCUIT FOR NEW PUMP. RE-WORK EXISTING SPARE MCC-B123 STARTER BUCKET FOR NEW PUMP. CONFIRM FUSE OR OVERLOAD SETTINGS WITH NEW PUMP NAMEPLATE.
P19	ROLLING FIRE DOOR W/ CONTROL PANEL AND FLUSH-MOUNTED CONTROL SWITCHES), FURNISHED AND INSTALLED BY ARCH. TRADES. DIV. 26 SHALL PROVIDE 120VAC POWER FOR MOTOR UNIT. EXTEND LOCAL 120V/1P 20A CIRCUIT TO NEW OVERHEAD DOOR (PANEL PP-8123B. PP-C107A OR PP-8100). ROUGH-IN FIRE ALARM SYSTEM INTERCONNECTION, AND INTERWIRING W/ ALL SWITCHES AND DOOR SENSORS FOR PROPER OPERATION. VERIFY CONTROL SWITCH BACKBOX REQUIREMENTS W/ DOOR CONTRACTOR PRIOR TO WALL ROUGH-IN. POWER DISCONNECT SWITCH SHALL BE MOUNTED ABOVE SUSPENDED CEILING, OR ADJACENT TO MOTOR UNIT IF NO SUSPENDED CEILING.

ISSUANCES	
11.15.2023	BIDS & CONSTRUCTION
12.06.2023	ADDENDUM 001
01.16.2024	CONSTRUCTION SET
03.21.2024	BULLETIN 003
06.26.2024	BULLETIN 007

DRAWN	NTM
REVIEWED	PRH

PROJECT NO. 5-5506

NO PART OF THIS DRAWING MAY BE USED OR REPRODUCED IN ANY FORM OR BY ANY MEANS, OR STORED IN A DATA BASE OR RETRIEVAL SYSTEM, WITHOUT PRIOR WRITTEN PERMISSION OF GMB COPYRIGHT © 2023 ALL RIGHTS RESERVED



KEYPLAN

UNIT 'C' FIRST FLOOR POWER & COMMUNICATION PLAN